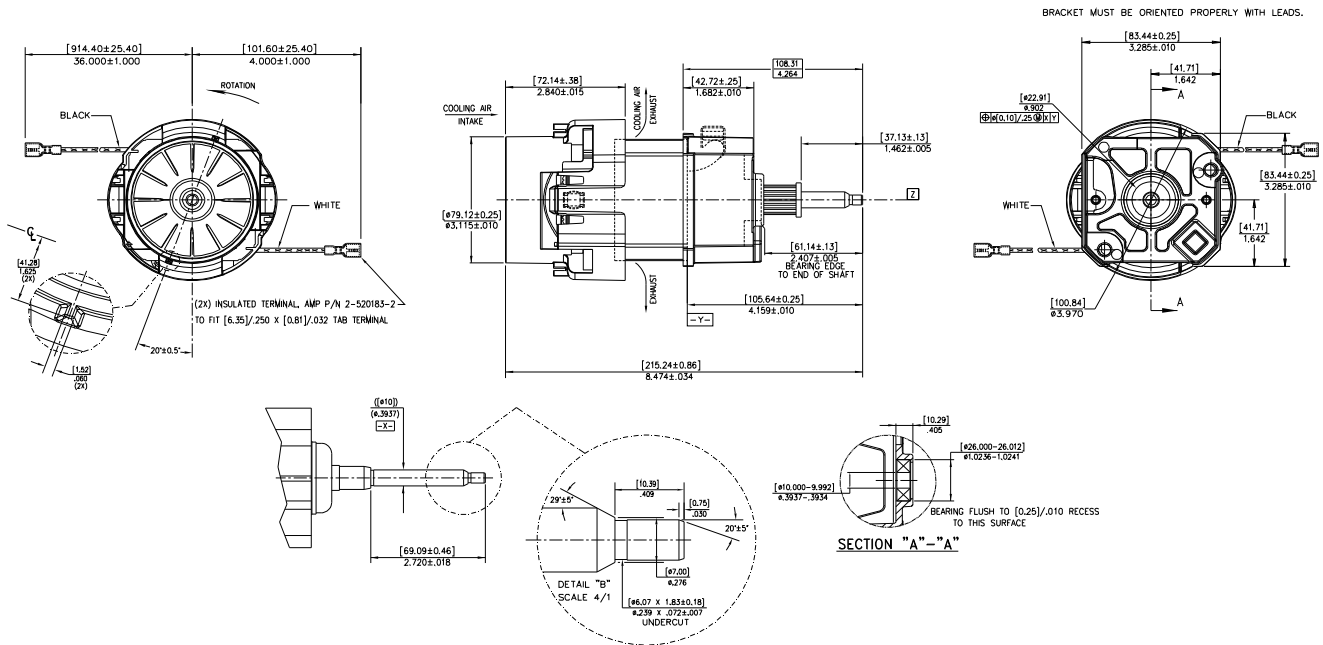


NOTES:

1. LEADS: 18 GA STRANDED.
2. MOTOR IDENTIFICATION: MANUFACTURER'S NAME, MODEL NUMBER, CUSTOMER PART NUMBER, VOLTAGE, FREQUENCY, INSPECTORS CODE, DATE OF MANUFACTURE, AGENCY RECOGNITION CODE, PLANT LOCATION CODE, USA, INMA, "088" FLJ AND COUNTRY OF ORIGIN.
3. ALLOW [0.0016 SQ MI]/2.5 SQ IN. MIN. FOR COOLING AIR INTAKE.



AMETEK/Floorcare & Specialty Motors
www.ametekfsm.com