



Floorcare & Specialty Motors

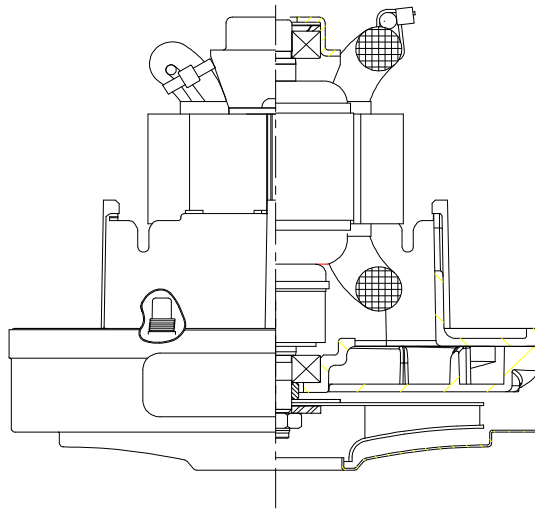
Model: 122545-00

DESCRIPTION

- One stage
- 240 volts
- 5.1"/130 mm diameter
- Double ball bearings
- Single speed
- Thru-flow discharge

SPECIAL FEATURES

- Suitable for 240 volt AC operation, 50/ 60 Hz
- UL/cUL recognized, category PRGY2 (E27701)
- Provision for grounding
- Tapered fan system
- High airflow fan system
- Thermally protected "L"

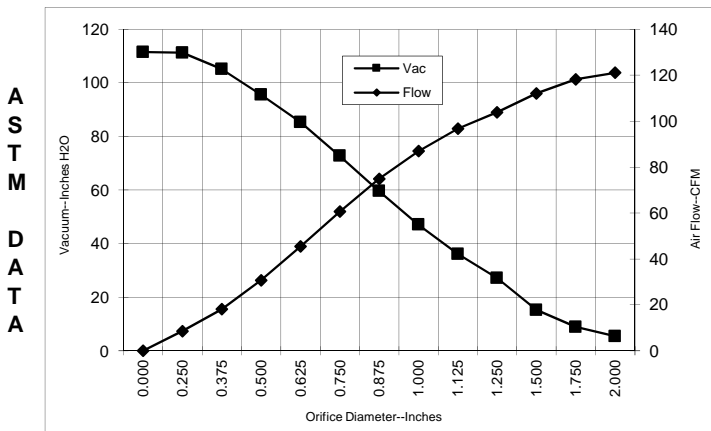


DESIGN APPLICATION

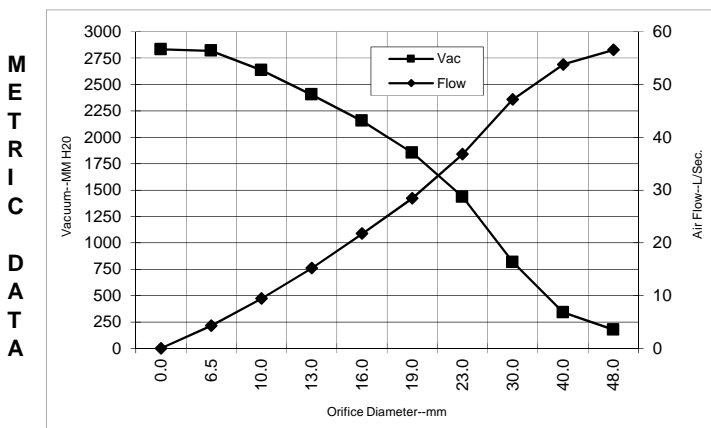
- Equipment operating in environments not requiring separation of working air from motor ventilating air
- Designed to handle clean, dry, filtered air only

TYPICAL MOTOR PERFORMANCE.*

(At 240 volts, 60Hz, test data is corrected to standard conditions of 29.92 Hg, 68° F.)



Orifice (Inches)	Amps	Watts (In)	RPM	Vac (In.H2O)	Flow (CFM)	Air Watts
2.000	6.1	1408	33609	5.4	121.1	77
1.750	6.1	1419	33492	8.9	118.2	124
1.500	6.1	1415	33558	15.2	112.1	200
1.250	6.1	1403	33703	27.2	103.9	331
1.125	6.0	1402	33863	36.1	96.8	410
1.000	5.9	1381	34047	47.1	87.0	480
0.875	5.8	1344	34570	59.6	74.9	524
0.750	5.5	1286	35275	72.7	60.6	517
0.625	5.1	1200	36596	85.4	45.4	455
0.500	4.7	1096	38311	95.6	30.7	345
0.375	4.2	988	40272	105.2	18.1	223
0.250	3.9	913	42060	111.3	8.6	112
0.000	3.6	841	43898	111.5	0.0	0



Orifice (mm)	Amps	Watts (In)	RPM	Vac (mm H2O)	Flow (L/Sec)	Air Watts
48.0	6.1	1413	33557	177	56.6	98
40.0	6.1	1416	33538	339	53.8	177
30.0	6.0	1403	33791	815	47.2	375
23.0	5.8	1353	34439	1434	36.8	513
19.0	5.5	1284	35302	1853	28.5	516
16.0	5.2	1204	36543	2155	21.7	458
13.0	4.7	1106	38140	2403	15.2	356
10.0	4.3	1004	39978	2635	9.4	242
6.5	3.9	917	41971	2818	4.3	117
0.0	3.6	841	43898	2833	0.0	0

Note: Metric performance data is calculated from the ASTM data above.

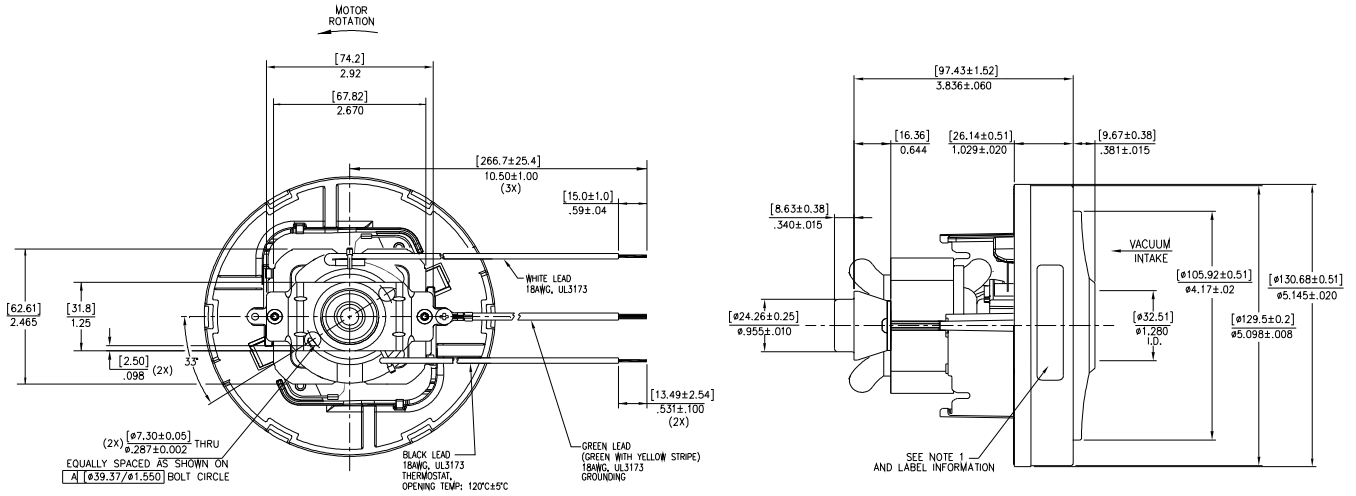
* Data represents performance of a typical motor sampled from a large production quantity. Individual motor data may vary due to normal manufacturing variations.

Test Specs: 240 volts	Minimum Sealed Vacuum: 102"	ORIFICE: 7/8"	Minimum Vacuum: 56"	Maximum Watts: 1430
------------------------------	------------------------------------	----------------------	----------------------------	----------------------------

DIMENSIONS

NOTES:

1. MODEL NUMBER, DATE OF MANUFACTURE, PLANT LOCATION CODE, AGENCY RECOGNITION CODE, INSPECTOR'S CODE, MANUFACTURER'S NAME, "US PATENT: US 6,703,754 B1", VOLTAGE AND FREQUENCY TO APPEAR ON MOTOR.



IMPORTANT NOTE: Pictorial and dimensional data are subject to change without notice. Contact factory for current revision levels.

WARNING - When using AMETEK Floorcare & Specialty Motors (F&SM) bypass motors in machines that come in contact with foam, liquid (including water), or other foreign substances, the machine must be designed and constructed to prevent those substances from reaching the fan system, motor housing, and electrical components. F&SM vacuum motors other than hazardous duty models should not be applied in machines that come in contact with dry chemicals or other volatile materials. Failure to observe these precautions could cause flashing (depending on volatility) or electrical shock which could result in property damage and severe bodily injury, including death in extreme cases. All applications incorporating F&SM motors should be submitted to appropriate organizations or agencies for testing specifically related to the safety of your equipment.

AMETEK/Floorcare & Specialty Motors
www.ametekfsm.com