



Floorcare & Specialty Motors

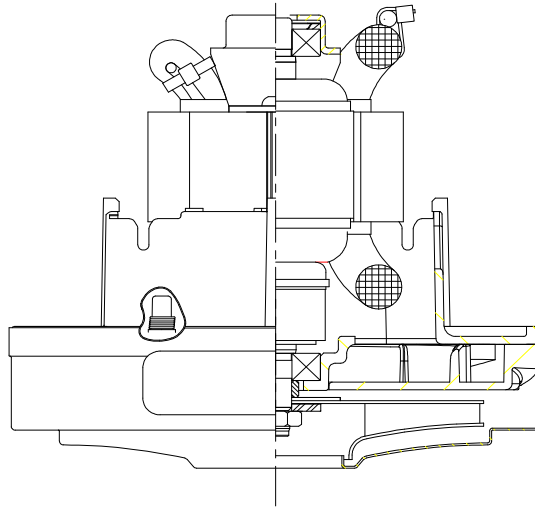
Model: 122543-00

DESCRIPTION

- One stage
- 120 volts
- 5.1"/130 mm diameter
- Double ball bearings
- Single speed
- Thru-flow discharge

SPECIAL FEATURES

- Suitable for 120 volt AC operation, 50/ 60 Hz
- UL/cUL recognized, category PRGY2 (E27701)
- Provision for grounding
- Tapered fan system
- High airflow fan system
- Thermally Protected "L"



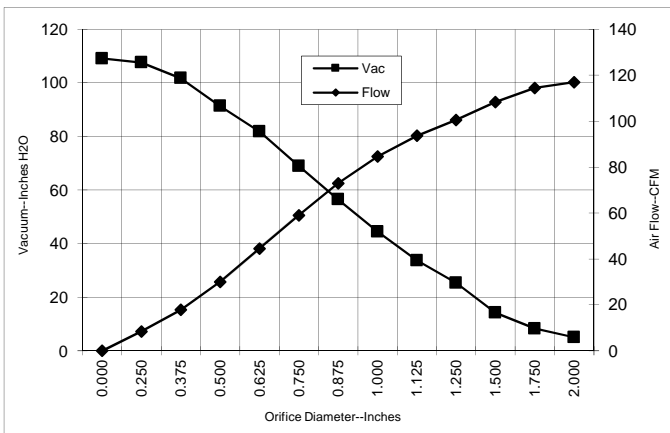
DESIGN APPLICATION

- Equipment operating in environments not requiring separation of working air from motor ventilating air
- Designed to handle clean, dry, filtered air only

TYPICAL MOTOR PERFORMANCE.*

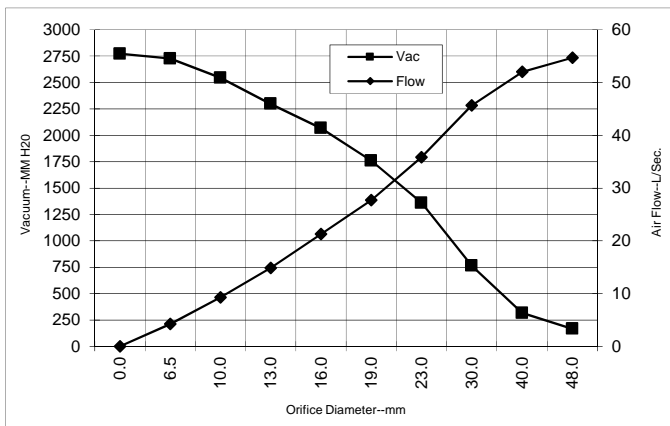
(At 120 volts, 60Hz, test data is corrected to standard conditions of 29.92 Hg, 68° F.)

ASTM DATA



Orifice (Inches)	Amps	Watts (In)	RPM	Vac (In.H2O)	Flow (CFM)	Air Watts
2.000	11.2	1299	32836	5.1	117.0	69
1.750	11.2	1300	32789	8.3	114.5	112
1.500	11.2	1300	32845	14.2	108.4	181
1.250	11.1	1293	32929	25.4	100.6	300
1.125	11.0	1284	33013	33.8	93.6	371
1.000	10.8	1263	33242	44.5	84.6	442
0.875	10.6	1234	33729	56.5	73.0	484
0.750	10.1	1178	34513	69.0	59.1	478
0.625	9.4	1100	35853	81.9	44.5	428
0.500	8.5	1001	37693	91.4	30.0	322
0.375	7.6	903	39680	101.7	17.8	213
0.250	7.0	826	41452	107.6	8.4	107
0.000	6.5	769	43608	109.1	0.0	0

METRIC DATA



Orifice (mm)	Amps	Watts (In)	RPM	Vac (mm H2O)	Flow (L/Sec)	Air Watts
48.0	11.2	1300	32816	165	54.7	88
40.0	11.2	1300	32828	316	52.0	160
30.0	11.1	1288	32975	762	45.7	339
23.0	10.6	1241	33607	1359	35.8	473
19.0	10.1	1176	34540	1759	27.7	477
16.0	9.4	1104	35799	2067	21.3	430
13.0	8.6	1011	37509	2297	14.9	332
10.0	7.8	918	39382	2545	9.3	229
6.5	7.0	829	41364	2726	4.2	112
0.0	6.5	769	43608	2772	0.0	0

Note: Metric performance data is calculated from the ASTM data above.

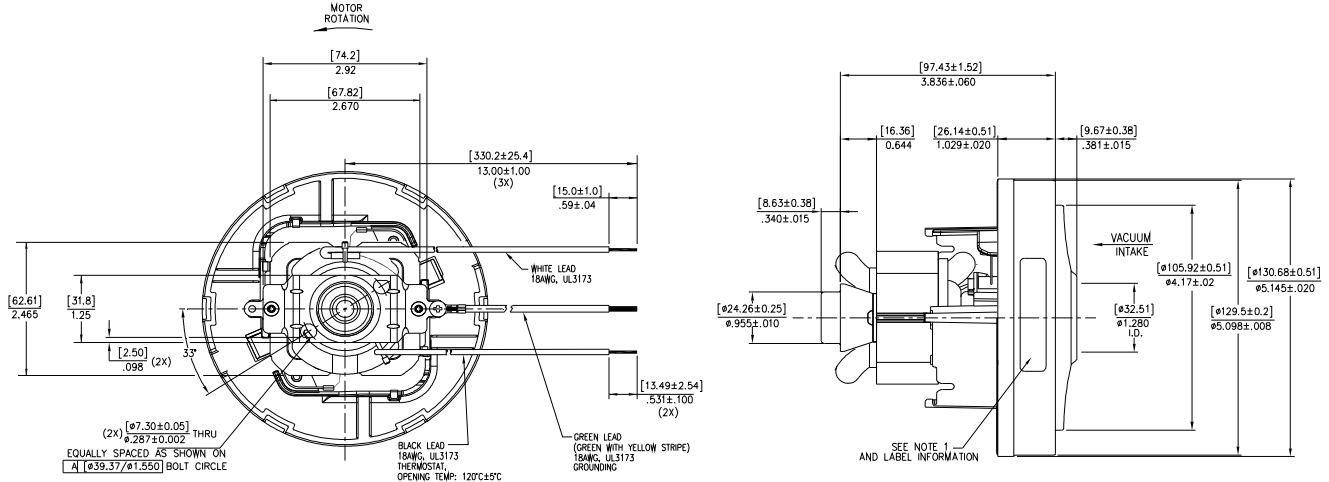
* Data represents performance of a typical motor sampled from a large production quantity. Individual motor data may vary due to normal manufacturing variations.

Test Specs: 120 volts	Minimum Sealed Vacuum: 100"	ORIFICE: 7/8"	Minimum Vacuum: 52"	Maximum Watts: 1320
------------------------------	------------------------------------	----------------------	----------------------------	----------------------------

DIMENSIONS

NOTES:

1. MODEL NUMBER, DATE OF MANUFACTURE, PLANT LOCATION CODE, AGENCY RECOGNITION CODE, INSPECTOR'S CODE, MANUFACTURER'S NAME, U.S. PATENT: US 6,703,754 B1*, VOLTAGE AND FREQUENCY TO APPEAR ON MOTOR.



IMPORTANT NOTE: Pictorial and dimensional data are subject to change without notice. Contact factory for current revision levels.

WARNING - When using AMETEK Floorcare & Specialty Motors (F&SM) bypass motors in machines that come in contact with foam, liquid (including water), or other foreign substances, the machine must be designed and constructed to prevent those substances from reaching the fan system, motor housing, and electrical components. F&SM vacuum motors other than hazardous duty models should not be applied in machines that come in contact with dry chemicals or other volatile materials. Failure to observe these precautions could cause flashing (depending on volatility) or electrical shock which could result in property damage and severe bodily injury, including death in extreme cases. All applications incorporating F&SM motors should be submitted to appropriate organizations or agencies for testing specifically related to the safety of your equipment.

AMETEK/Floorcare & Specialty Motors
www.ametekfsm.com