

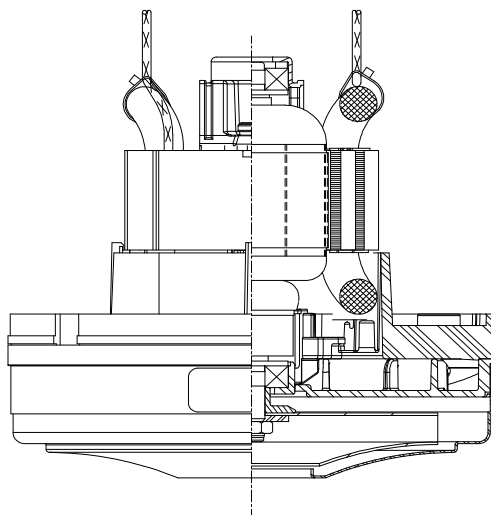


DESCRIPTION

- One stage
- 120 volts
- 5.7"/145 mm diameter
- Double ball bearings
- Single speed
- Thru-flow discharge
- Thermost fan end bracket
- Stamped steel end bracket

DESIGN APPLICATION

- Equipment operating in environments not requiring separation of working air from motor ventilating air
- Designed to handle clean, dry, filtered air only



SPECIAL FEATURES

- **600 Peak Air Watts**
- Patented Advantek III diffusion
- 3" Commercial Lamination
- Provision for grounding to end mounting boss
- Self-hold Thermal Device for blocked inlet protection
- UL recognized, category PRGY2 (E47185)
- Suitable for 120 volt AC operation, 50 or 60 Hz

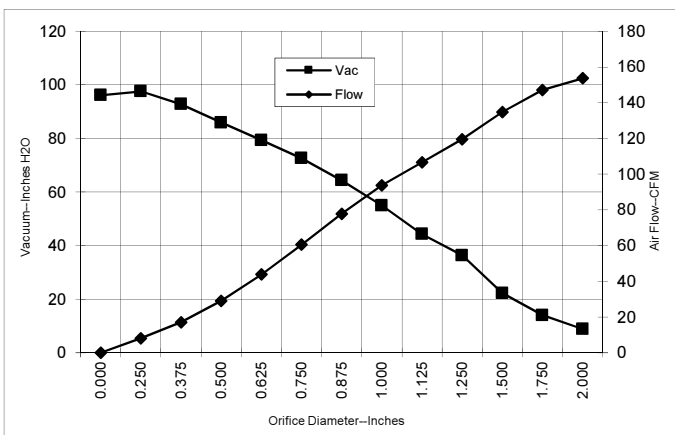
Advantek III - Ultra

PEAK AIRWATTS
605
Calculated in accordance with ASTM F2105

TYPICAL MOTOR PERFORMANCE.*

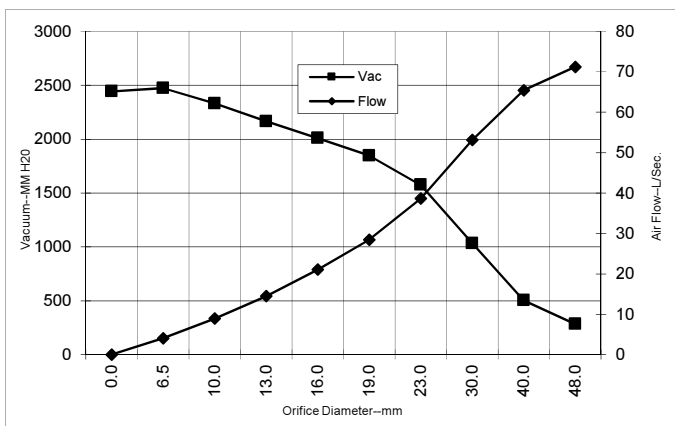
(At 120 volts, 60Hz, test data is corrected to standard conditions of 29.92 Hg, 68° F.)

**A
S
T
M
D
A
T
A**



Orifice (Inches)	Amps	Watts (In)	RPM	Vac (In.H2O)	Flow (CFM)	Air Watts
2.000	12.7	1472	28118	8.9	153.7	160
1.750	12.7	1477	28121	14.1	147.2	243
1.500	12.3	1435	28011	22.3	134.8	352
1.250	12.5	1454	28667	36.3	119.6	510
1.125	11.9	1387	28845	44.3	106.7	555
1.000	11.9	1379	29180	55.0	93.7	605
0.875	11.2	1311	30037	64.4	77.8	588
0.750	10.5	1225	30873	72.6	60.6	516
0.625	9.4	1109	32115	79.4	43.9	408
0.500	8.7	1020	33385	85.9	29.1	294
0.375	7.9	937	34614	92.8	17.1	186
0.250	7.4	882	35888	97.6	8.1	93
0.000	7.1	840	36492	96.2	0.0	0

**M
E
T
R
I
C
D
A
T
A**



Orifice (mm)	Amps	Watts (In)	RPM	Vac (mm H2O)	Flow (L/Sec)	Air Watts
48.0	12.7	1475	28119	283	71.2	196
40.0	12.5	1448	28044	503	65.4	319
30.0	12.2	1417	28765	1034	53.1	534
23.0	11.4	1328	29823	1575	38.6	592
19.0	10.4	1222	30898	1848	28.4	514
16.0	9.5	1114	32066	2009	21.0	413
13.0	8.7	1029	33258	2166	14.4	305
10.0	8.0	949	34429	2331	8.9	202
6.5	7.5	884	35824	2473	4.0	97
0.0	7.1	840	36492	2442	0.0	0

Note: Metric Performance data is calculated from the ASTM data above.

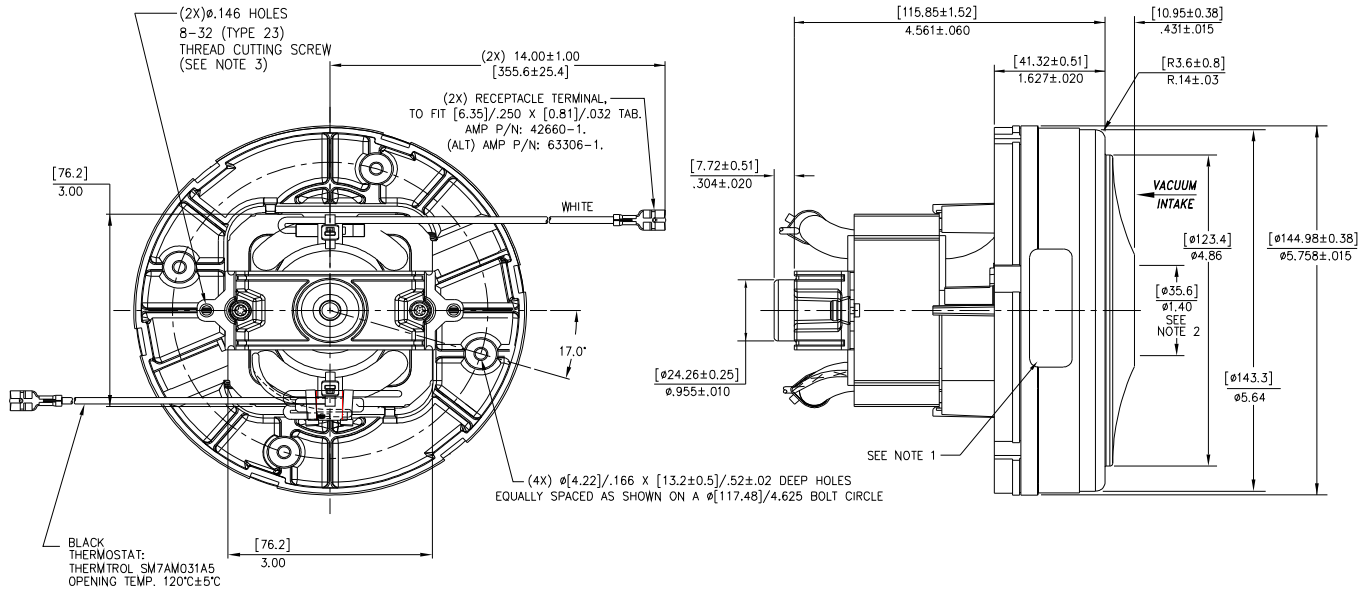
* Data represents performance of a typical motor sampled from a large production quantity. Individual motor data may vary due to normal manufacturing variations.

Test Specs:	120 volts	Minimum Sealed Vacuum:	93"	ORIFICE:	7/8 "	Minimum Vacuum:	63"	Maximum Watts:	1500
--------------------	------------------	-------------------------------	------------	-----------------	--------------	------------------------	------------	-----------------------	-------------

DIMENSIONS

NOTES:

1. MODEL NUMBER, DATE OF MANUFACTURE, PLANT LOCATION CODE, AGENCY RECOGNITION CODE, INSPECTOR'S CODE, MANUFACTURER'S NAME, "US PATENT: US 6,703,754 B1", VOLTAGE AND FREQUENCY TO APPEAR ON MOTOR.
2. MOUNTING MUST NOT RESTRICT THIS DIAMETER.
3. GROUNDING OR EARTHING PROVISIONS: USE TAB AS INDICATED FOR GROUNDING OR EARTHING. REFER TO APPROPRIATE LISTING OR REGULATORY AGENCY FOR PROPER METHOD OF GROUNDING OR EARTHING.
4. LEADS 18 GA. STRANDED.



IMPORTANT NOTE: Pictorial and dimensional data are subject to change without notice. Contact factory for current revision levels.

WARNING - AMETEK Floorcare & Specialty Motors thru-flow vacuum motors must never be used in applications in which wet or moist conditions are involved, where dry chemicals or other volatile materials are present, or where airflow may be restricted or blocked. Such motors are designed to permit the vacuumed air to pass over the electrical winding to cool it. Thus any foam, liquid (including water), dry chemical, or other foreign substance coming in contact with electrical conductors could cause combustion (depending on volatility) or electrical shock. Failure to observe these precautions could result in property damage and severe personal injury, including death in extreme cases. All applications incorporating Lamb Electric motors should be submitted to Underwriters Laboratories Inc. or other appropriate organizations or agencies for testing specifically related to the safety of your equipment.

AMETEK Dynamic Fluid Solutions
www.ametekDFS.com