

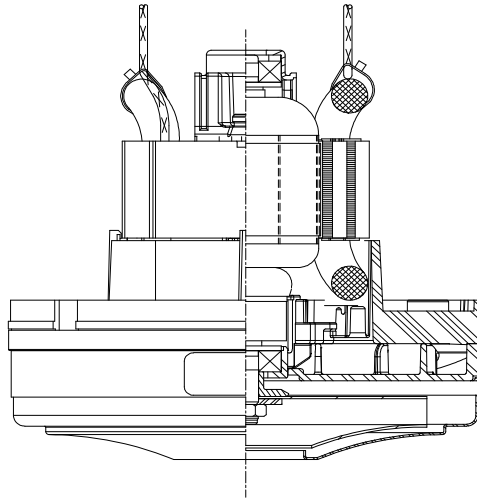


DESCRIPTION

- One stage
- 240 volts
- 5.7"/145 mm diameter
- Double ball bearings
- Single speed
- Thru-flow discharge
- Thermostet fan end bracket
- Stamped steel end bracket

DESIGN APPLICATION

- Equipment operating in environments not requiring separation of working air from motor ventilating air
- Designed to handle clean, dry, filtered air only



SPECIAL FEATURES

- **600 Peak Air Watts**
- Patented Advantek III diffusion
- 3" Commercial Lamination
- Provision for grounding to end mounting boss
- Self-hold Thermal Device for blocked inlet protection
- UL recognized, category PRGY2 (E47185)
- Suitable for 240 volt AC operation, 50 or 60 Hz

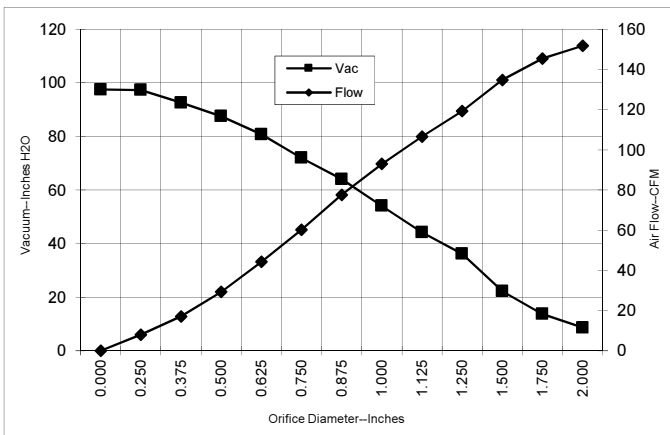
Advantek III - Ultra

PEAK AIRWATTS
600
Calculated in accordance with ASTM F2105

TYPICAL MOTOR PERFORMANCE.*

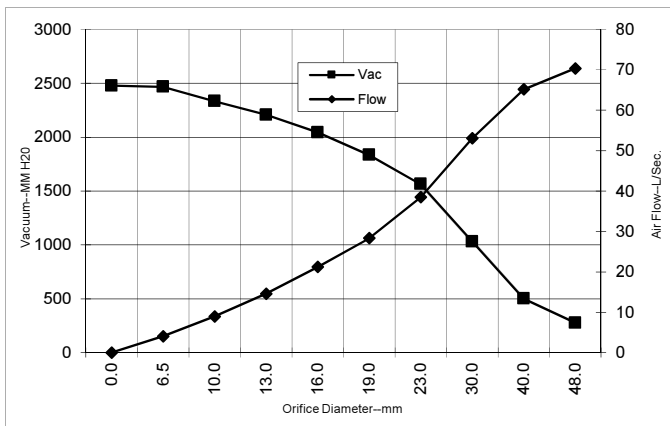
(At 240 volts, 60Hz, test data is corrected to standard conditions of 29.92 Hg, 68° F.)

ASTM DATA



Orifice (Inches)	Amps	Watts (In)	RPM	Vac (In.H2O)	Flow (CFM)	Air Watts
2.000	6.7	1548	27924	8.6	151.8	154
1.750	6.8	1564	28041	13.7	145.5	234
1.500	6.7	1549	28208	22.3	134.7	352
1.250	6.6	1515	28357	36.2	119.3	506
1.125	6.4	1483	28672	44.2	106.6	553
1.000	6.2	1434	29199	54.1	93.0	590
0.875	6.0	1383	29968	64.1	77.6	584
0.750	5.6	1299	30728	72.0	60.3	510
0.625	5.4	1246	32158	80.8	44.2	420
0.500	4.7	1088	33458	87.5	29.4	302
0.375	4.5	1051	34538	92.6	17.1	185
0.250	3.9	924	35869	97.3	8.1	92
0.000	3.7	876	36836	97.5	0.0	0

METRIC DATA



Orifice (mm)	Amps	Watts (In)	RPM	Vac (mm H2O)	Flow (L/Sec)	Air Watts
48.0	6.8	1555	27975	276	70.3	189
40.0	6.7	1553	28158	500	65.1	317
30.0	6.5	1497	28530	1031	53.0	532
23.0	6.0	1396	29776	1564	38.5	585
19.0	5.6	1298	30756	1833	28.3	508
16.0	5.4	1248	32101	2043	21.2	423
13.0	4.7	1104	33328	2206	14.6	314
10.0	4.5	1057	34376	2332	8.9	203
6.5	4.0	930	35803	2466	4.0	97
0.0	3.7	876	36836	2476	0.0	0

Note: Metric Performance data is calculated from the ASTM data above.

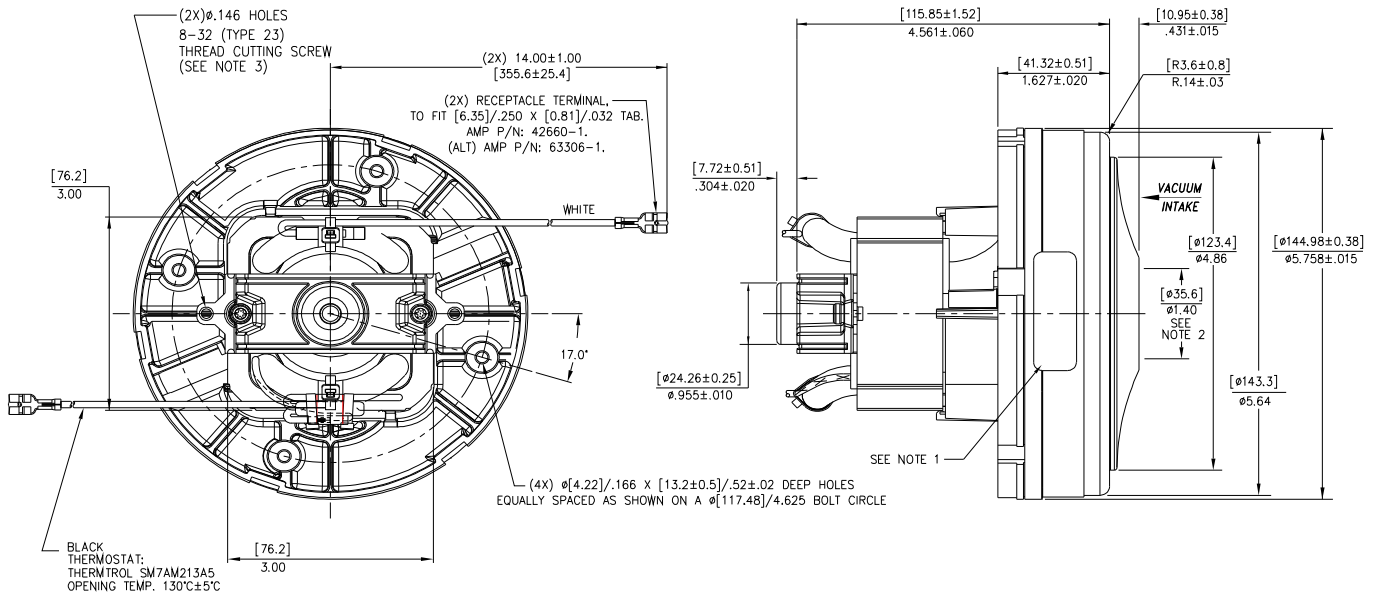
* Data represents performance of a typical motor sampled from a large production quantity. Individual motor data may vary due to normal manufacturing variations.

Test Specs:	240 volts	Minimum Sealed Vacuum:	93"	ORIFICE:	7/8 "	Minimum Vacuum:	63"	Maximum Watts:	1500
--------------------	------------------	-------------------------------	------------	-----------------	--------------	------------------------	------------	-----------------------	-------------

DIMENSIONS

NOTES:

1. MODEL NUMBER, DATE OF MANUFACTURE, PLANT LOCATION CODE, AGENCY RECOGNITION CODE, INSPECTOR'S CODE, MANUFACTURER'S NAME, "US PATENT: US 6,703,754 B1", VOLTAGE AND FREQUENCY TO APPEAR ON MOTOR.
2. MOUNTING MUST NOT RESTRICT THIS DIAMETER.
3. GROUNDING OR EARTHING PROVISIONS: USE TAB AS INDICATED FOR GROUNDING OR EARTHING. REFER TO APPROPRIATE LISTING OR REGULATORY AGENCY FOR PROPER METHOD OF GROUNDING OR EARTHING.
4. LEADS 18 GA. STRANDED.



IMPORTANT NOTE: Pictorial and dimensional data are subject to change without notice. Contact factory for current revision levels.

WARNING - AMETEK Floorcare & Specialty Motors thru-flow vacuum motors must never be used in applications in which wet or moist conditions are involved, where dry chemicals or other volatile materials are present, or where airflow may be restricted or blocked. Such motors are designed to permit the vacuumed air to pass over the electrical winding to cool it. Thus any foam, liquid (including water), dry chemical, or other foreign substance coming in contact with electrical conductors could cause combustion (depending on volatility) or electrical shock. Failure to observe these precautions could result in property damage and severe personal injury, including death in extreme cases. All applications incorporating Lamb Electric motors should be submitted to Underwriters Laboratories Inc. or other appropriate organizations or agencies for testing specifically related to the safety of your equipment.

AMETEK Dynamic Fluid Solutions
www.ametekDFS.com