



**Lamb Electric**

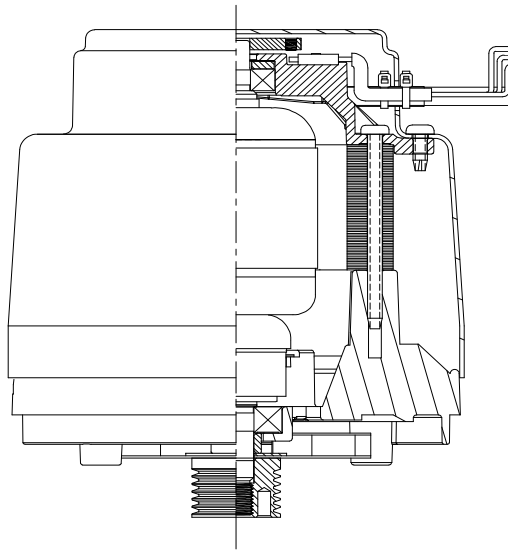
**Model: 122514-00**

**DESCRIPTION**

5" Inch Frame Size  
 120 Volt  
 Series Wound  
 Drive Motor  
 CW Rotation - Drive End

**DESIGN APPLICATION**

Used in Appliances  
 Power Tools, Outdoor Equipment,  
 Food Processing Equipment,  
 Gearmotors, Blowers, Pumps, and  
 others.



**SPECIAL FEATURES**

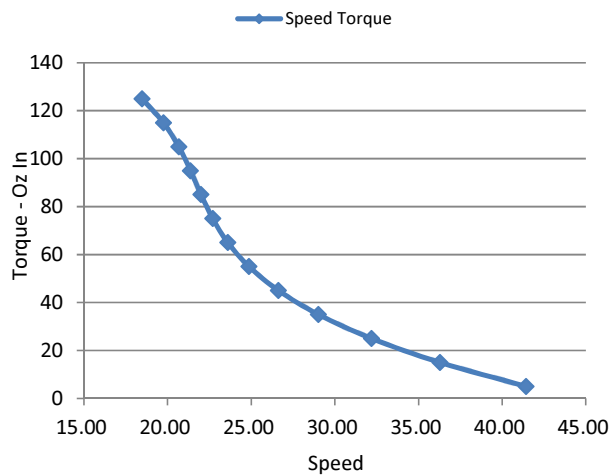
- Eternity Brushes +1500 hrs life
- High Efficiency
- Hi Power Density
- Quiet Design



**TYPICAL MOTOR PERFORMANCE.\***

(60Hz, test data is 29.92 Hg, 70° F.)

\* Data represents performance of a typical motor sampled from a large production quantity. Individual motor data may vary due to normal manufacturing variations.



Torque oz in	Amps	Watts	Corr Watts	RPM x 10 <sup>3</sup>		Watts Out	Eff
5	3.920	495	495	41.44		153.0	30.9
15	5.320	655	655	36.28		403.0	61.5
25	6.740	815	815	32.20		595.0	73.0
35	8.170	974	974	29.02		751.0	77.1
45	9.600	1,132	1,132	26.63		887.0	78.4
55	11.030	1,288	1,288	24.87		1012.0	78.6
65	12.450	1,441	1,441	23.61		1135.0	78.8
75	13.860	1,593	1,593	22.70		1259.0	79.0
85	15.250	1,742	1,742	22.00		1383.0	79.4
95	16.610	1,887	1,887	21.37		1502.0	79.6
105	17.940	2,029	2,029	20.67		1606.0	79.2
115	19.240	2,168	2,168	19.76		1681.0	77.5
125	20.490	2,302	2,302	18.48		1709.0	74.2

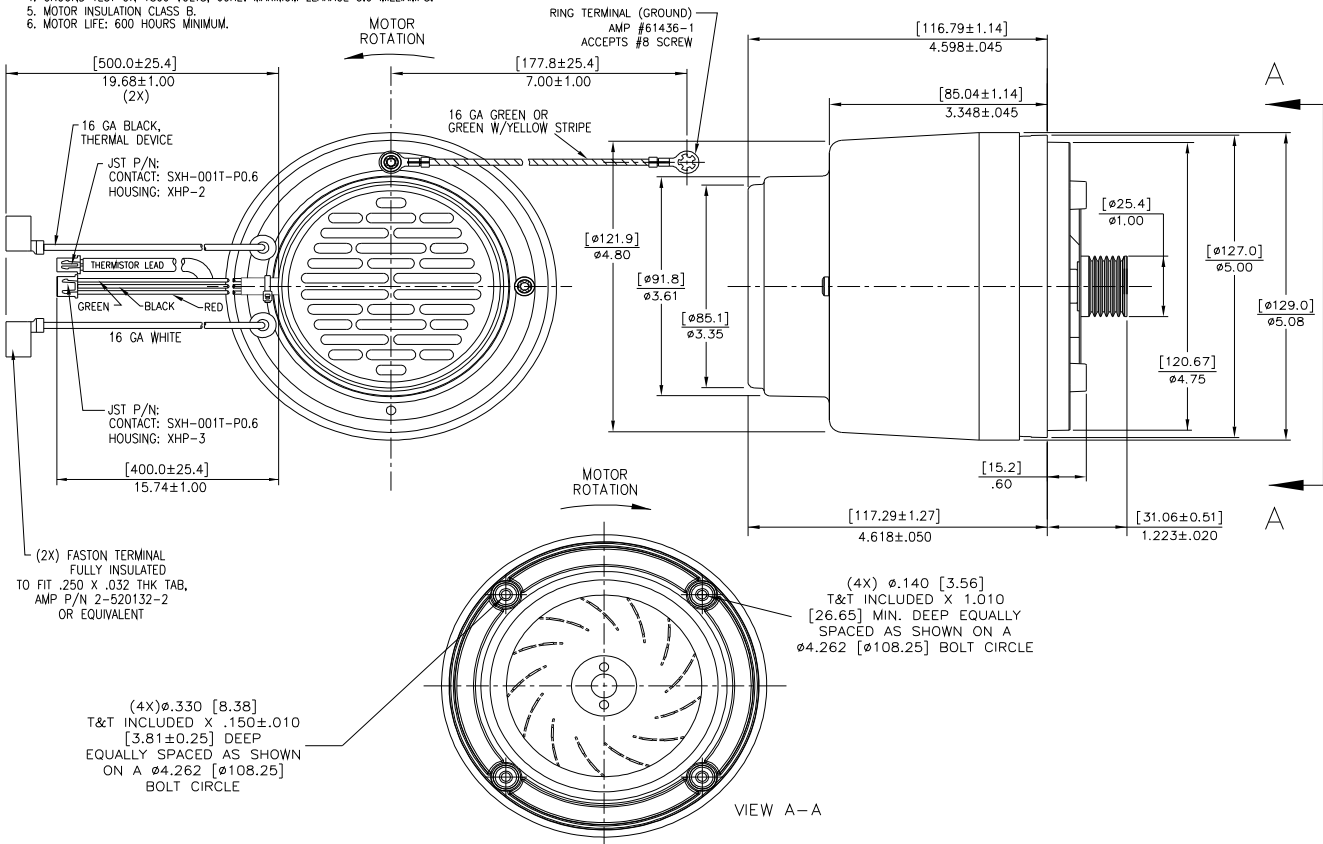
**IMPORTANT NOTE:** Pictorial and dimensional data are subject to change without notice. Contact factory for current revision levels.

**WARNING** - When using AMETEK Lamb Electric bypass motors in machines that come in contact with foam, liquid (including water), or other foreign substances, the machine must be designed and constructed to prevent those substances from reaching the fan system, motor housing, and electrical components. Lamb Electric vacuum motors other than hazardous duty models should not be applied in machines that come in contact with dry chemicals or other volatile materials. Failure to observe these precautions could cause flashing (depending on volatility) or electrical shock which could result in property damage and severe bodily injury, including death in extreme cases. All applications incorporating Lamb Electric motors should be submitted to appropriate organizations or agencies for testing specifically related to the safety of your equipment.

**DIMENSIONS**

**NOTES:**

1. MODEL NUMBER, DATE OF MANUFACTURE, PLANT LOCATION CODE, AGENCY RECOGNITION CODE, INSPECTOR'S CODE, MANUFACTURER'S NAME, "US PATENTS PENDING", VOLTAGE AND FREQUENCY, AND CUSTOMER'S PART NO. TO APPEAR ON MOTOR.
2. MOTOR HAS NO END PLAY.
3. REFERENCE: NO LOAD PERFORMANCE AT 70 VOLTS: 3.60/4.50 AMPS, 240/330 WATTS.
4. GROUND TEST ON 1800 VOLTS, 60HZ. MAXIMUM LEAKAGE 3.0 MILLIAMPS.
5. MOTOR INSULATION CLASS B.
6. MOTOR LIFE: 600 HOURS MINIMUM.



**AMETEK Dynamic Fluid Solutions**  
[www.ametekdfs.com](http://www.ametekdfs.com)

Modified Aug 2019