



Floorcare & Specialty Motors

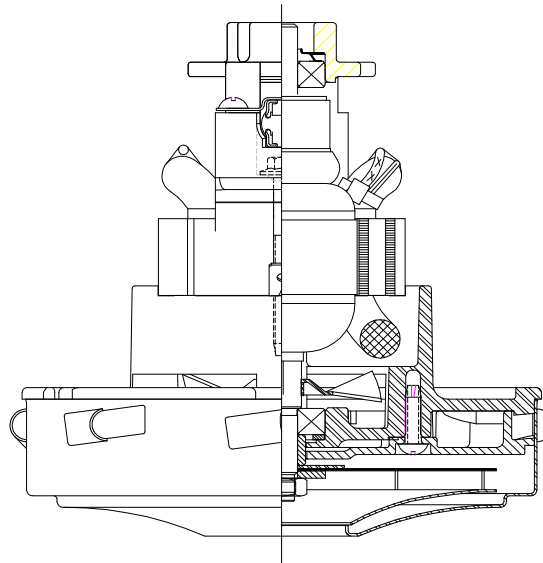
Model: 122479-00

DESCRIPTION

- Single stage
- 120 volts
- 5.1"/130 mm diameter
- Double ball bearings
- Single speed
- Peripheral bypass discharge
- Thermoset fan end bracket
- Thermoset commutator bracket

DESIGN APPLICATION

- Equipment operating in environments requiring separation of working air from motor ventilating air
- Designed to handle clean, dry, filtered air only

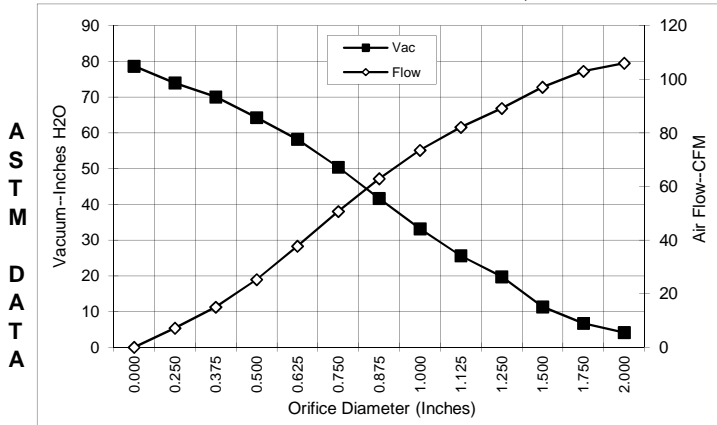


SPECIAL FEATURES

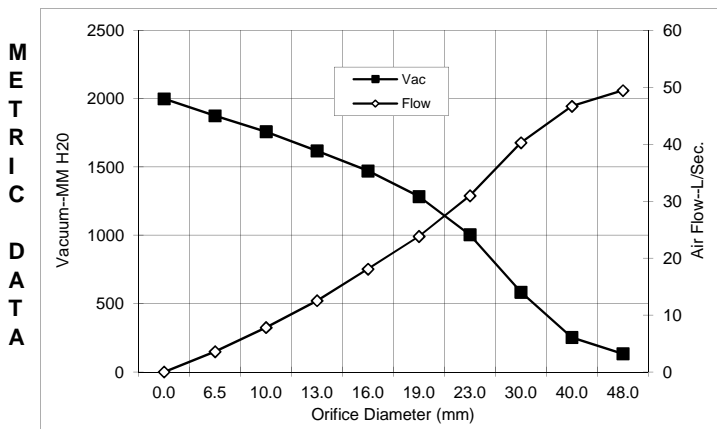
- Suitable for 120 volt AC operation, 50/60 Hz
- UL recognized, category PRGY2 (E47185)
- Provision for grounding
- Skeleton frame design
- Tapered fan system
- High air flow fan system
- The Lamb vacuum motor line offers a wide range of performance levels to meet design needs

TYPICAL MOTOR PERFORMANCE.*

(At 120 volts, 60Hz, test data is corrected to standard conditions of 29.92 Hg, 68° F.)



Orifice (Inches)	Amps	Watts (In)	RPM	Vac (In.H ₂ O)	Flow (CFM)	Air Watts
2.000	8.0	932	27483	4.1	106	51
1.750	8.0	932	27392	6.7	103	81
1.500	8.0	933	27372	11.3	97	129
1.250	8.0	932	27354	19.8	89	207
1.125	8.0	928	27389	25.6	82	247
1.000	7.9	919	27512	33.2	73	286
0.875	7.8	907	27786	41.6	63	307
0.750	7.6	881	28274	50.4	51	300
0.625	7.2	839	29040	58.2	38	258
0.500	6.7	788	30073	64.3	25	191
0.375	6.2	730	31348	70.0	15	123
0.250	5.8	684	32467	74.0	7	62
0.000	5.4	640	33102	78.7	0	0



Orifice (mm)	Amps	Watts (In)	RPM	Vac (mm H ₂ O)	Flow (L/Sec)	Air Watts
48.0	8.0	932	27443	133	49.4	64
40.0	8.0	933	27378	252	46.6	114
30.0	8.0	930	27373	584	40.2	229
23.0	7.8	910	27718	1004	30.9	302
19.0	7.5	880	28289	1284	23.8	299
16.0	7.2	841	29009	1470	18.0	259
13.0	6.8	793	29970	1617	12.5	197
10.0	6.3	739	31156	1757	7.8	133
6.5	5.8	686	32411	1874	3.6	65
0.0	5.4	640	33102	1998	0.0	0

Note: Metric performance data is calculated from the ASTM data above.

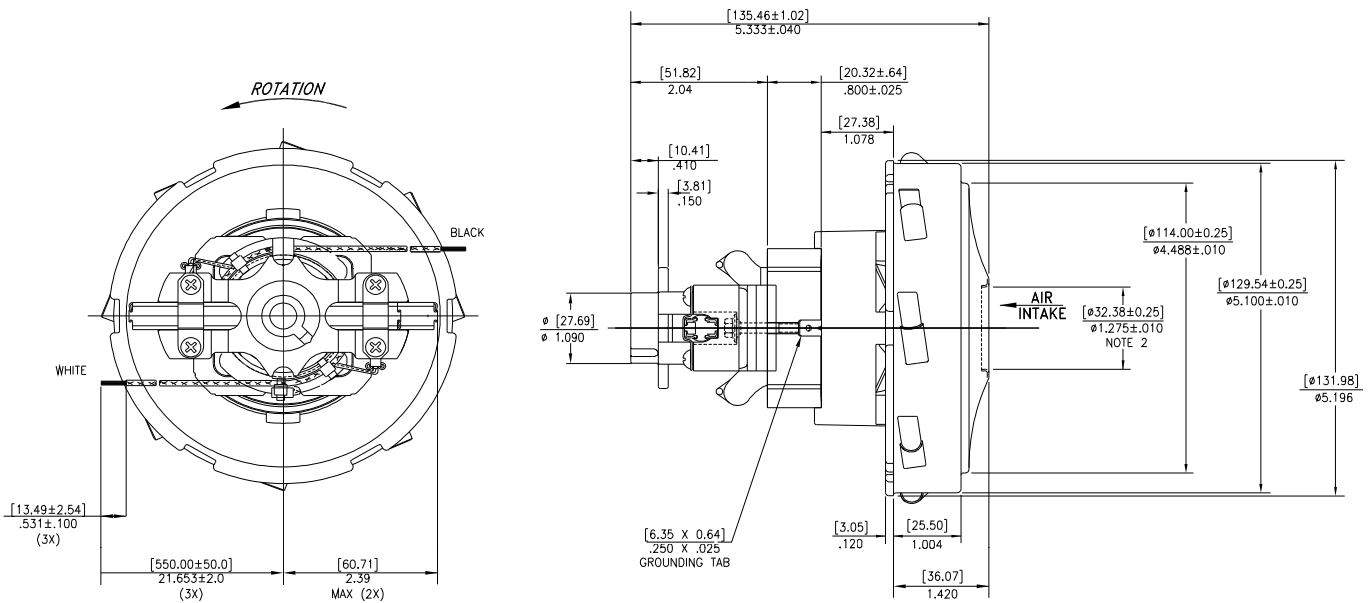
* Data represents performance of a typical motor sampled from a large production quantity. Individual motor data may vary to normal manufacturing variations.

Test Specs:	Minimum Sealed Vacuum: 77"	ORIFICE: 7/8"	Minimum Vacuum: 40"	Maximum Watts: 935
--------------------	-----------------------------------	----------------------	----------------------------	---------------------------

DIMENSIONS

NOTES:

1. MOTOR IDENTIFICATION: MANUFACTURER'S NAME, MODEL NUMBER, VOLTAGE, FREQUENCY, INSPECTORS CODE, DATE OF MANUFACTURE, AGENCY RECOGNITION CODE.
2. MOUNTING MUST NOT RESTRICT THIS DIAMETER.
3. LEADS: 18 AWG STRANDED, UL 3271., LEAD COLORS: ONE BLACK, ONE WHITE.



IMPORTANT NOTE: Pictorial and dimensional data are subject to change without notice. Contact factory for current revision levels.

WARNING - When using AMETEK/Lamb Electric bypass motors in machines that come in contact with foam, liquid (including water) of other foreign substances, the machine must be designed and constructed to prevent those substances from reaching the fan system, motor housing and electrical components. Lamb vacuum motors other than hazardous duty models should not be applied in machines that come in contact with dry chemicals or other volatile materials. Failure to observe these precautions could cause flashing (depending on volatility) or electrical shock which could result in property damage and severe bodily injury, including death in extreme cases. All applications incorporating Lamb motors should be submitted to appropriate organizations or agencies for testing specifically related to the safety of your equipment.

AMETEK/Floorcare & Specialty Motors
www.ametekfsm.com