



LAMB ELECTRIC

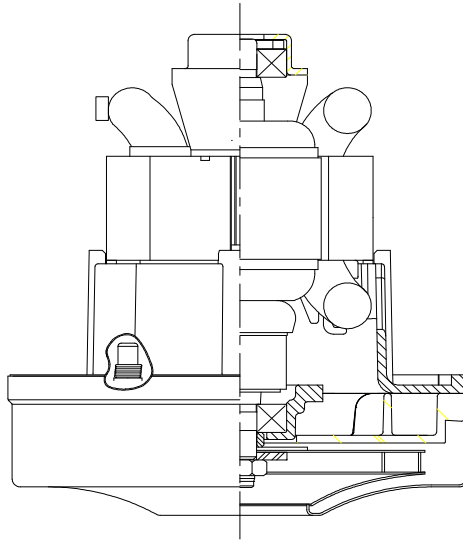
Model: 122420-00

DESCRIPTION

- One stage
- 36 volts
- 4.3" / 106 mm diameter
- Dual ball bearings
- Single speed
- Thru-flow discharge
- Thermoset fan end bracket
- Steel Top bracket

DESIGN APPLICATION

- Equipment operating in environments requiring separation of working air from motor ventilating air
- Designed to handle clean, dry, filtered air only



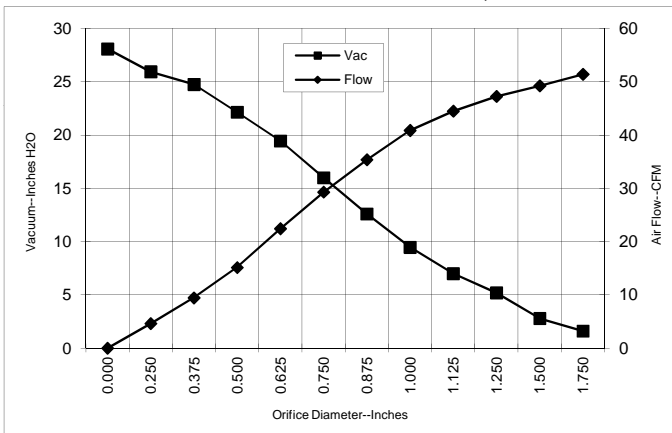
SPECIAL FEATURES

- Suitable for 36 VDC
- UL recognized, category PRGY2 (E47185)
- CSA certified, class 1611 01 (LR31393)
- Grounding Wire
- 3 Prong Deutsch Connector
- The Lamb vacuum motor line offers a wide range of performance levels to meet design needs

TYPICAL MOTOR PERFORMANCE.*

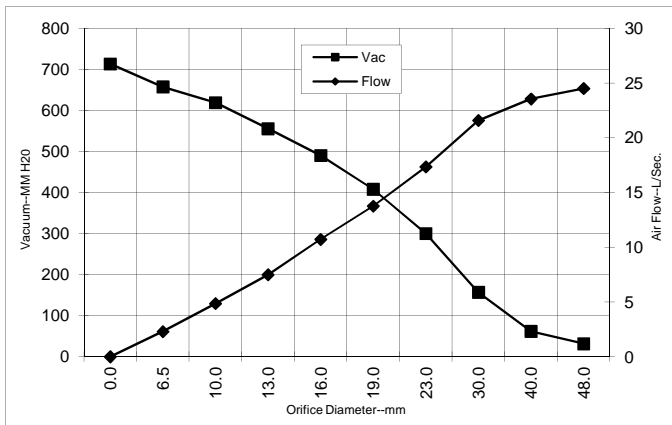
(At 36 volts DC, test data is corrected to standard conditions of 29.92 Hg, 68° F.)

ASTM DATA



Orifice (Inches)	Amps	Watts (In)	RPM	Vac (In.H ₂ O)	Flow (CFM)	Air Watts
2.000	5.0	181	19032	1.0	52.3	6
1.750	5.0	181	19009	1.6	51.4	10
1.500	5.0	182	19009	2.8	49.2	16
1.250	5.0	180	19143	5.2	47.3	29
1.125	5.0	180	19106	7.0	44.5	36
1.000	5.0	179	19299	9.5	40.9	45
0.875	4.9	177	19479	12.6	35.4	52
0.750	4.8	175	19833	16.0	29.3	55
0.625	4.7	171	20365	19.4	22.4	51
0.500	4.6	166	20834	22.1	15.1	39
0.375	4.4	158	22074	24.8	9.4	27
0.250	4.2	153	23009	25.9	4.6	14
0.000	4.0	145	24093	28.1	0.0	0

METRIC DATA



Orifice (mm)	Amps	Watts (In)	RPM	Vac (mm H ₂ O)	Flow (L/Sec)	Air Watts
48.0	5.0	181	19022	32	24.5	8
40.0	5.0	181	19009	62	23.6	14
30.0	5.0	180	19122	157	21.6	33
23.0	4.9	177	19434	300	17.3	51
19.0	4.8	175	19843	408	13.8	55
16.0	4.7	171	20343	490	10.7	51
13.0	4.6	167	20787	556	7.5	41
10.0	4.4	159	21888	619	4.9	29
6.5	4.2	154	22962	657	2.3	15
0.0	4.0	145	24093	713	0.0	0

Note: Metric performance data is calculated from the ASTM data above.

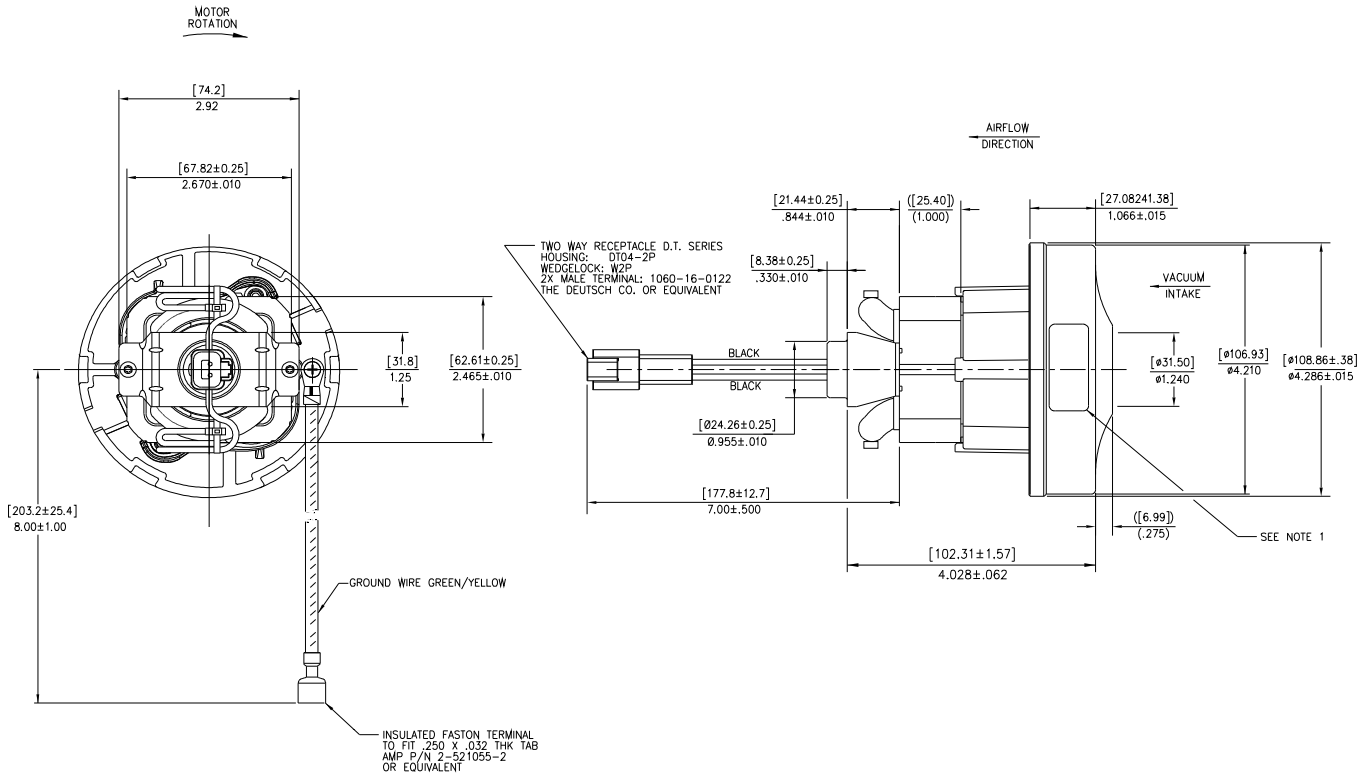
* Data represents performance of a typical motor sampled from a large production quantity. Individual motor data may vary due to normal manufacturing variations.

Test Specs: 36 volts	Minimum Sealed Vacuum: 25"	ORIFICE: 7/8"	Minimum Vacuum: 11.6"	Maximum Watts: 188
-----------------------------	-----------------------------------	----------------------	------------------------------	---------------------------

DIMENSIONS

NOTES:

1. MODEL NUMBER, DATE OF MANUFACTURE, PLANT LOCATION CODE, AGENCY RECOGNITION CODE, INSPECTOR'S CODE, MANUFACTURER'S NAME, "US PATENT: US 6,703,754 B1 & PATENTS PENDING", VOLTAGE AND FREQUENCY, AND CUSTOMER'S PART NO. TO APPEAR ON MOTOR.



IMPORTANT NOTE: Pictorial and dimensional data are subject to change without notice. Contact factory for current revision levels.

WARNING - When using AMETEK Lamb Electric bypass motors in machines that come in contact with foam, liquid (including water), or other foreign substances, the machine must be designed and constructed to prevent those substances from reaching the fan system, motor housing, and electrical components. Lamb Electric vacuum motors other than hazardous duty models should not be applied in machines that come in contact with dry chemicals or other volatile materials. Failure to observe these precautions could cause flashing (depending on volatility) or electrical shock which could result in property damage and severe bodily injury, including death in extreme cases. All applications incorporating Lamb Electric motors should be submitted to appropriate organizations or agencies for testing specifically related to the safety of your equipment.

AMETEK/Floorcare & Specialty Motors
www.ametekfsm.com