

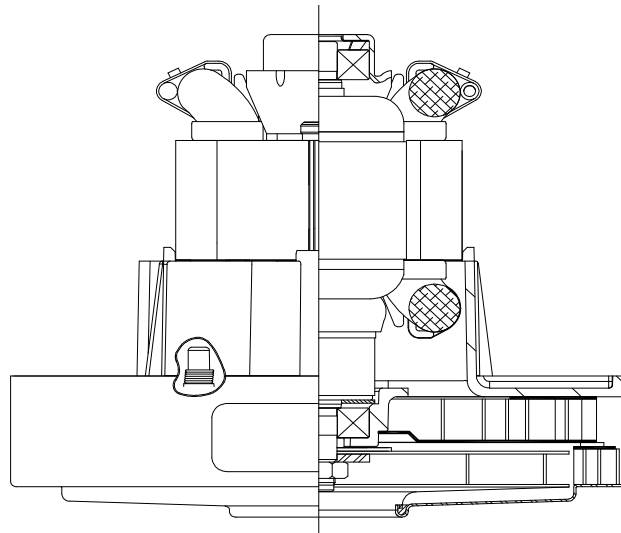


**DESCRIPTION**

- One stage
- 36 volts DC
- 5.3"/135mm diameter
- Ball/Ball bearing system
- Single speed
- Thru-flow discharge
- Thermoset fan end bracket
- Steel End-bracket

**DESIGN APPLICATION**

- Equipment operating in environments not requiring separation of working air from motor ventilating air
- Designed to handle clean, dry, filtered air only

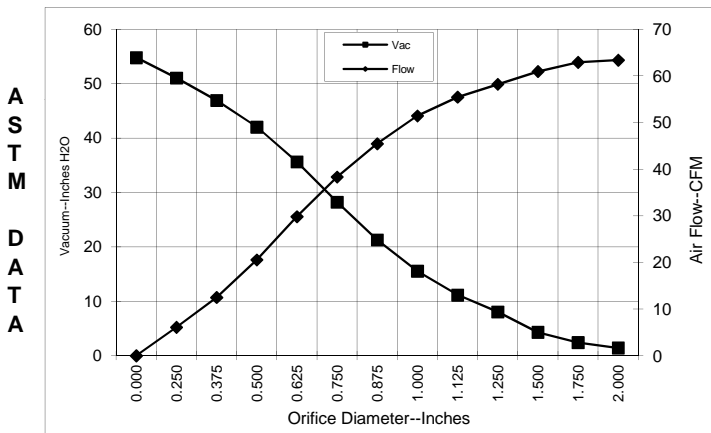


**SPECIAL FEATURES**

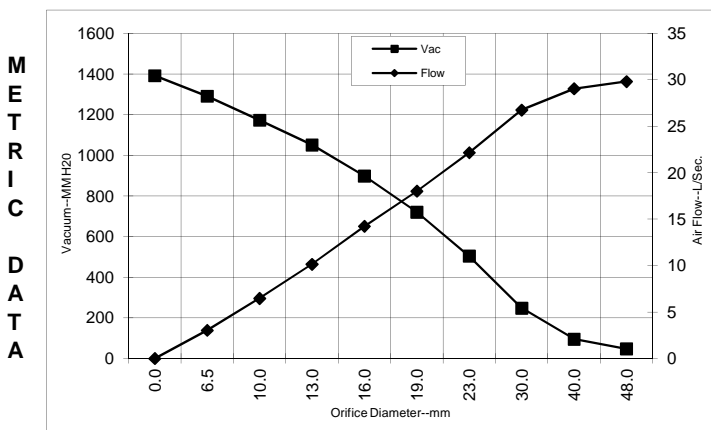
- Suitable for 36 volt DC
- UL recognized, category PRGY2 (E47185)
- Provision for grounding per UL 1563
- Skeleton-frame construction
- **Patented Advantek diffusion**
- **High efficiency fan system**
- **Self Hold thermal device**

**TYPICAL MOTOR PERFORMANCE.\***

(At 36 volts test data is corrected to standard conditions of 29.92 Hg, 68° F.)



Orifice (Inches)	Amps	Watts (In)	RPM	Vac (In.H2O)	Flow (CFM)	Air Watts
2.000	12.6	454	18,481	1.4	63.4	11
1.750	12.5	452	18,483	2.4	62.9	18
1.500	12.5	451	18,533	4.3	60.9	31
1.250	12.5	450	18,628	8.1	58.2	55
1.125	12.3	442	18,711	11.2	55.4	73
1.000	12.1	436	18,858	15.5	51.4	94
0.875	11.8	428	19,092	21.3	45.5	113
0.750	11.5	416	19,637	28.2	38.3	127
0.625	11.0	396	20,457	35.6	29.8	125
0.500	10.4	375	21,452	42.0	20.6	101
0.375	10.0	361	22,507	46.9	12.5	69
0.250	9.4	342	23,456	51.0	6.1	37
0.000	9.1	328	24,185	54.8	0.0	0



Orifice (mm)	Amps	Watts (In)	RPM	Vac (mm H2O)	Flow (L/Sec)	Air Watts
48.0	12.6	453	18482	48	29.8	14
40.0	12.5	451	18518	95	29.0	27
30.0	12.4	446	18673	248	26.8	65
23.0	11.9	430	19033	504	22.2	109
19.0	11.5	415	19653	721	18.0	127
16.0	11.0	397	20424	898	14.2	125
13.0	10.4	377	21353	1051	10.1	104
10.0	10.0	363	22348	1173	6.5	74
6.5	9.5	343	23409	1291	3.0	38
0.0	9.1	328	24185	1392	0.0	0

Note: Metric performance data is calculated from the ASTM data above.

\* Data represents performance of a typical motor sampled from a large production quantity. Individual motor data may vary due to normal manufacturing variations.

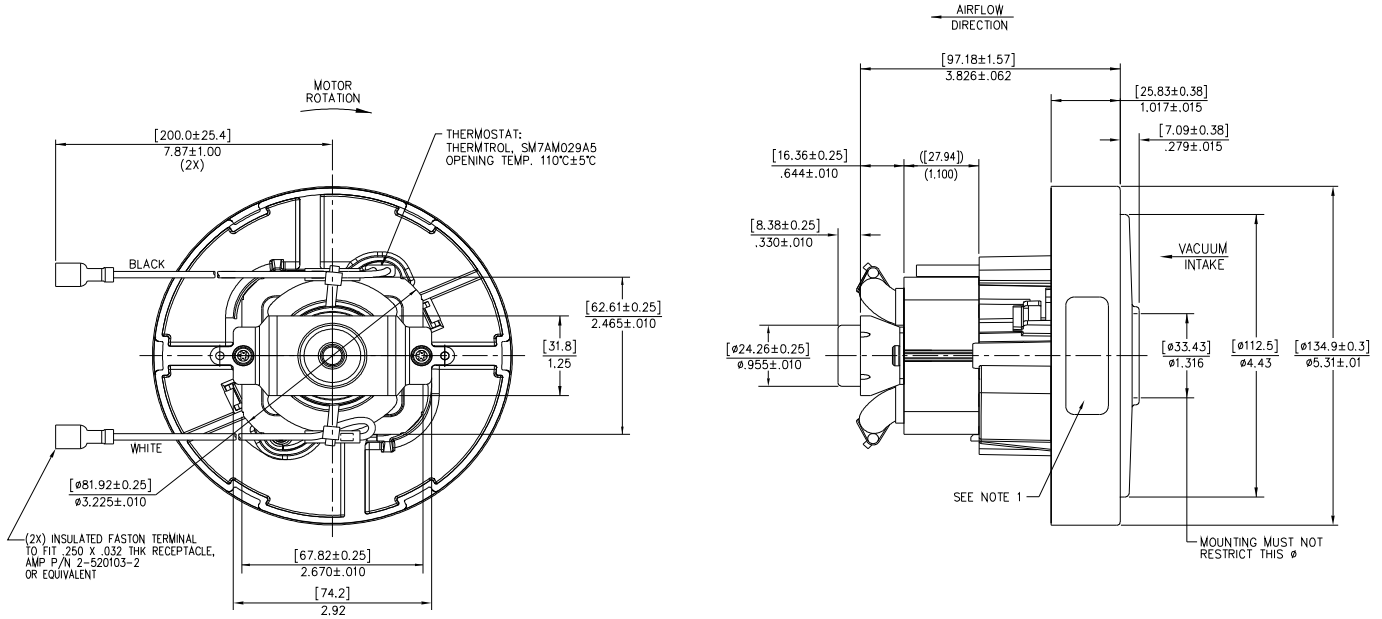
<b>Test Specs:</b>	<b>36 VDC</b>	<b>Minimum Sealed Vacuum:</b>	<b>49.0</b>	<b>ORIFICE:</b>	<b>7/8"</b>	<b>Minimum Vacuum:</b>	<b>19.5</b>	<b>Maximum Watts:</b>	<b>480</b>
--------------------	---------------	-------------------------------	-------------	-----------------	-------------	------------------------	-------------	-----------------------	------------



**DIMENSIONS**

**NOTES:**

1. MODEL NUMBER, DATE OF MANUFACTURE, PLANT LOCATION CODE, AGENCY RECOGNITION CODE, MANUFACTURER'S NAME, "US PATENT: US 6,703,754 B1 & PATENTS PENDING", VOLTAGE AND FREQUENCY, AND CUSTOMER'S PART NO. TO APPEAR ON MOTOR.



**IMPORTANT NOTE:** Pictorial and dimensional data are subject to change without notice. Contact factory for current revision levels.

**WARNING** - AMETEK Lamb Electric thru-flow vacuum motors must never be used in applications in which wet or moist conditions are involved, where dry chemicals or other volatile materials are present, or where airflow may be restricted or blocked. Such motors are designed to permit the vacuumed air to pass over the electrical winding to cool it. Thus any foam, liquid (including water), dry chemical, or other foreign substance coming in contact with electrical conductors could cause combustion (depending on volatility) or electrical shock. Failure to observe these precautions could result in property damage and severe personal injury, including death in extreme cases. All applications incorporating Lamb Electric motors should be submitted to Underwriters Laboratories Inc. or other appropriate organizations or agencies for testing specifically related to the safety of your equipment.

**AMETEK/Floorcare & Specialty Motors**  
[www.ametekfsm.com](http://www.ametekfsm.com)