



LAMB ELECTRIC

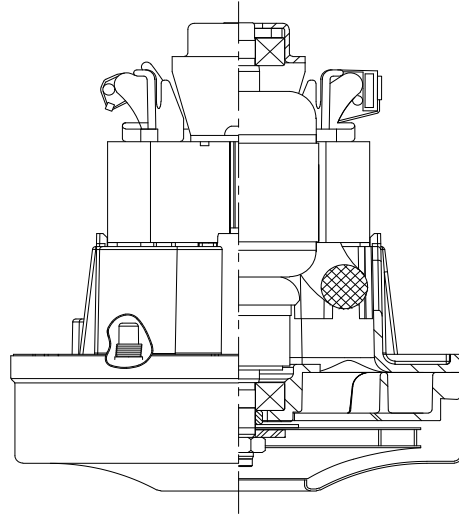
Model: 122388-07

DESCRIPTION

- One stage
- 120 volts
- 4.3" / 106 mm diameter
- Dual ball bearings
- Single speed
- Thru-flow discharge
- Thermal set fan end bracket
- Metal commutator bracket

DESIGN APPLICATION

- Equipment operating in environments requiring separation of working air from motor ventilating air
- Designed to handle clean, dry, filtered air only



SPECIAL FEATURES

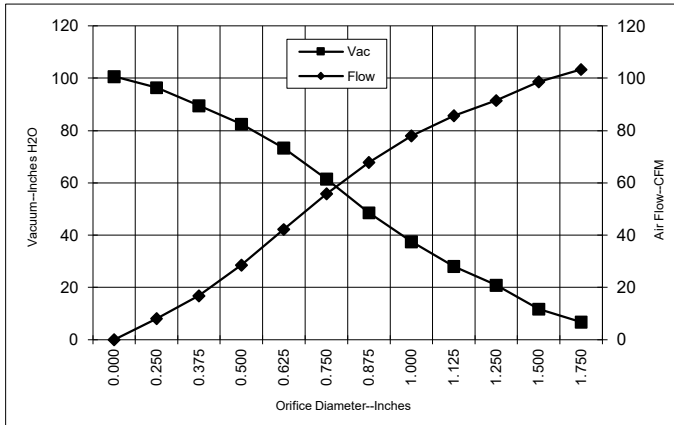
- Suitable for 120 volt AC operation, 50/60 Hz
- cRUus recognized, category PRGY2/8 (E47185)
- Thermostat
- Provision for grounding

- The Lamb vacuum motor line offers a wide range of performance levels to meet design needs

TYPICAL MOTOR PERFORMANCE.*

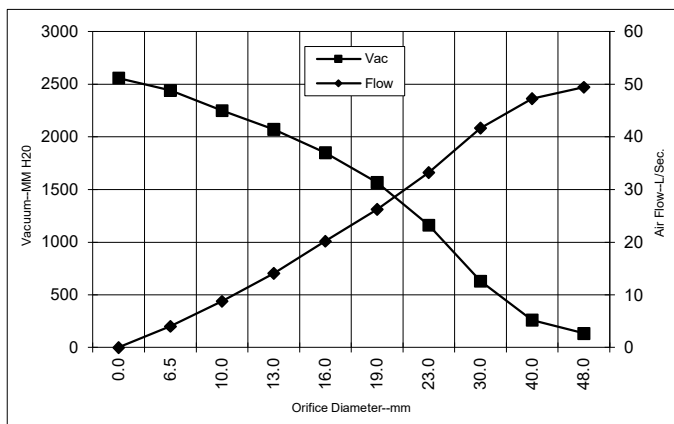
(At 120 volts DC, test data is corrected to standard conditions of 29.92 Hg, 68° F.)

ASTM DATA



Orifice (Inches)	Amps	Watts (In)	RPM	Vac (In.H ₂ O)	Flow (CFM)	Air Watts
2.000	9.3	1088	37119	4.1	105.7	51
1.750	9.2	1080	37120	6.7	103.4	82
1.500	9.1	1067	37013	11.7	98.7	136
1.250	9.1	1070	37159	20.8	91.5	224
1.125	9.0	1057	37323	28.0	85.7	282
1.000	9.0	1056	37695	37.5	78.0	343
0.875	8.8	1030	38021	48.5	67.8	386
0.750	8.6	1013	39057	61.4	55.8	403
0.625	8.1	953	40363	73.3	42.2	363
0.500	7.5	884	41878	82.4	28.5	276
0.375	6.8	803	43857	89.6	16.8	177
0.250	6.2	736	45512	96.4	8.0	91
0.000	6.0	711	47594	100.7	0.0	0

METRIC DATA



Orifice (mm)	Amps	Watts (In)	RPM	Vac (mm H ₂ O)	Flow (L/Sec)	Air Watts
48.0	9.2	1084	37119	134	49.4	64
40.0	9.1	1071	37045	260	47.2	119
30.0	9.1	1063	37249	630	41.7	256
23.0	8.8	1037	37939	1162	33.2	375
19.0	8.6	1012	39084	1567	26.2	402
16.0	8.1	955	40311	1849	20.2	364
13.0	7.5	891	41726	2070	14.1	285
10.0	6.9	816	43560	2248	8.8	192
6.5	6.2	739	45430	2439	4.0	95
0.0	6.0	711	47594	2558	0.0	0

Note: Metric performance data is calculated from the ASTM data above.

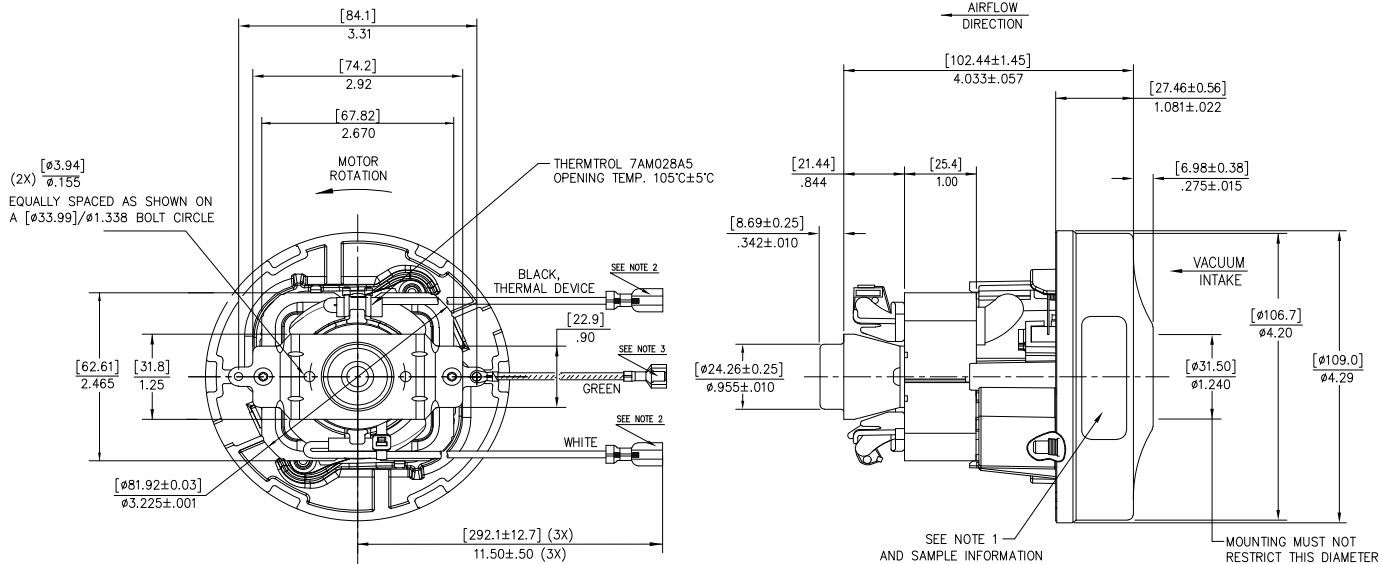
* Data represents performance of a typical motor sampled from a large production quantity. Individual motor data may vary due to normal manufacturing variations.

Test Specs: 120 volts	Minimum Sealed Vacuum: 91.0"	ORIFICE: 7/8"	Minimum Vacuum: 45.4"	Maximum Watts: 1135
------------------------------	-------------------------------------	----------------------	------------------------------	----------------------------

DIMENSIONS

NOTES:

1. MODEL NUMBER, DATE OF MANUFACTURE, PLANT LOCATION CODE, AGENCY RECOGNITION CODE, INSPECTOR'S CODE, MANUFACTURER'S NAME, "US PATENT: US 6,703,754 B1 & PATENTS PENDING", VOLTAGE AND FREQUENCY, AND CUSTOMER'S PART NO. TO APPEAR ON MOTOR.
2. FASTON TERMINAL TO FIT .250 X .032 THK TAB, AMP P/N 2-520183-2 OR EQUIVALENT.
3. FASTON TERMINAL TO FIT .250 X .032 THK TAB, AMP P/N 2-510103-2.
4. LEADS 18GA STRANDED UL STYLE 3321 AND 8173.



IMPORTANT NOTE: Pictorial and dimensional data are subject to change without notice. Contact factory for current revision levels.

WARNING - When using AMETEK Lamb Electric bypass motors in machines that come in contact with foam, liquid (including water), or other foreign substances, the machine must be designed and constructed to prevent those substances from reaching the fan system, motor housing, and electrical components. Lamb Electric vacuum motors other than hazardous duty models should not be applied in machines that come in contact with dry chemicals or other volatile materials. Failure to observe these precautions could cause flashing (depending on volatility) or electrical shock which could result in property damage and severe bodily injury, including death in extreme cases. All applications incorporating Lamb Electric motors should be submitted to appropriate organizations or agencies for testing specifically related to the safety of your equipment.

AMETEK Dynamic Fluid Solutions
www.ametekdfs.com