

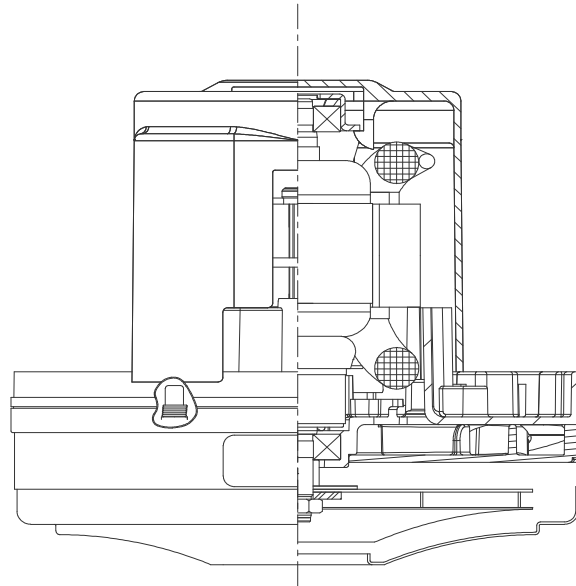


**DESCRIPTION**

- One stage
- 240 volts
- 5.7"/145mm diameter
- Ball/Ball bearing system
- Single speed
- Thru-flow discharge
- Thermoset fan end bracket
- Steel End-bracket

**DESIGN APPLICATION**

- Equipment operating in environments not requiring separation of working air from motor ventilating air
- Designed to handle clean, dry, filtered air only

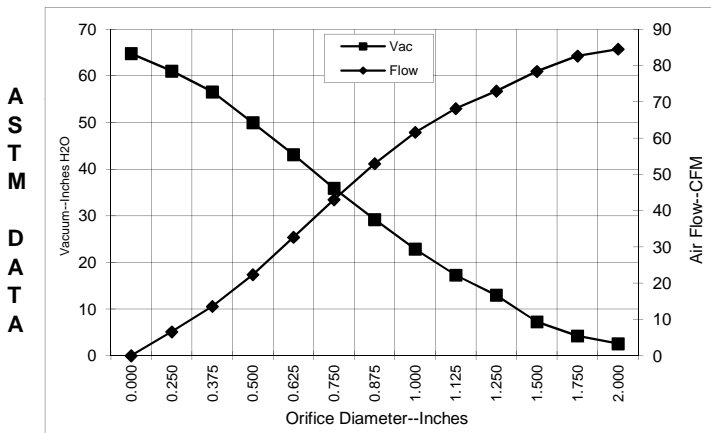


**SPECIAL FEATURES**

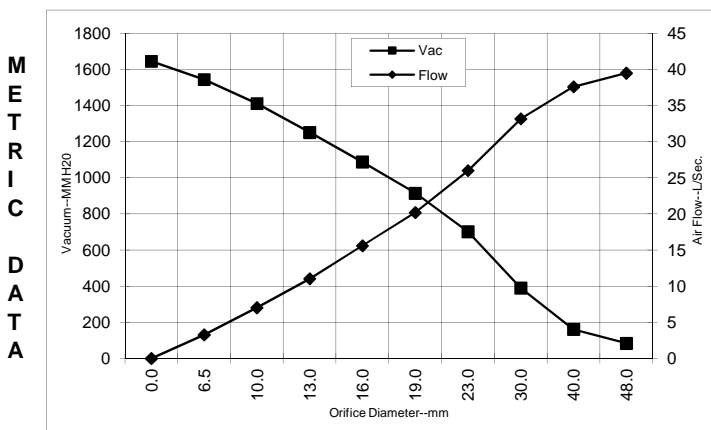
- Suitable for 240 volt AC operation at 60 Hz
- UL recognized, category PRGY2 (E47185)
- Provision for grounding per UL 1563
- CSA certified, class 1611 01 (LR31393)
- Skeleton-frame construction
- **Patented Advantek diffusion system**
- **Tapered high efficiency fan system**
- **Self Hold thermal device**

**TYPICAL MOTOR PERFORMANCE.\***

(At 240 volts, 60Hz, test data is corrected to standard conditions of 29.92 Hg, 68° F.)



Orifice (Inches)	Amps	Watts (In)	RPM	Vac (In.H2O)	Flow (CFM)	Air Watts
2.000	2.3	547	20,775	2.6	84.5	26
1.750	2.3	537	20,677	4.2	82.6	41
1.500	2.3	527	20,677	7.3	78.4	67
1.250	2.3	537	20,873	13.0	72.9	111
1.125	2.3	537	20,922	17.3	68.1	138
1.000	2.3	536	21,020	22.9	61.6	165
0.875	2.2	520	21,168	29.2	52.9	181
0.750	2.2	509	21,659	35.9	43.0	181
0.625	2.1	485	22,297	43.1	32.7	165
0.500	1.9	458	23,329	50.0	22.4	131
0.375	1.8	424	24,655	56.6	13.6	90
0.250	1.7	395	25,834	61.0	6.6	47
0.000	1.6	371	27,012	64.8	0.0	0



Orifice (mm)	Amps	Watts (In)	RPM	Vac (mm H2O)	Flow (L/Sec)	Air Watts
48.0	2.3	542	20732	84	39.5	32
40.0	2.3	530	20677	162	37.6	59
30.0	2.3	537	20900	390	33.2	126
23.0	2.2	524	21131	702	26.0	177
19.0	2.2	508	21672	915	20.2	181
16.0	2.1	486	22272	1088	15.6	166
13.0	2.0	461	23226	1252	11.0	135
10.0	1.8	429	24456	1411	7.0	96
6.5	1.7	396	25775	1544	3.3	49
0.0	1.6	371	27012	1645	0.0	0

Note: Metric performance data is calculated from the ASTM data above.

\* Data represents performance of a typical motor sampled from a large production quantity. Individual motor data may vary due to normal manufacturing variations.

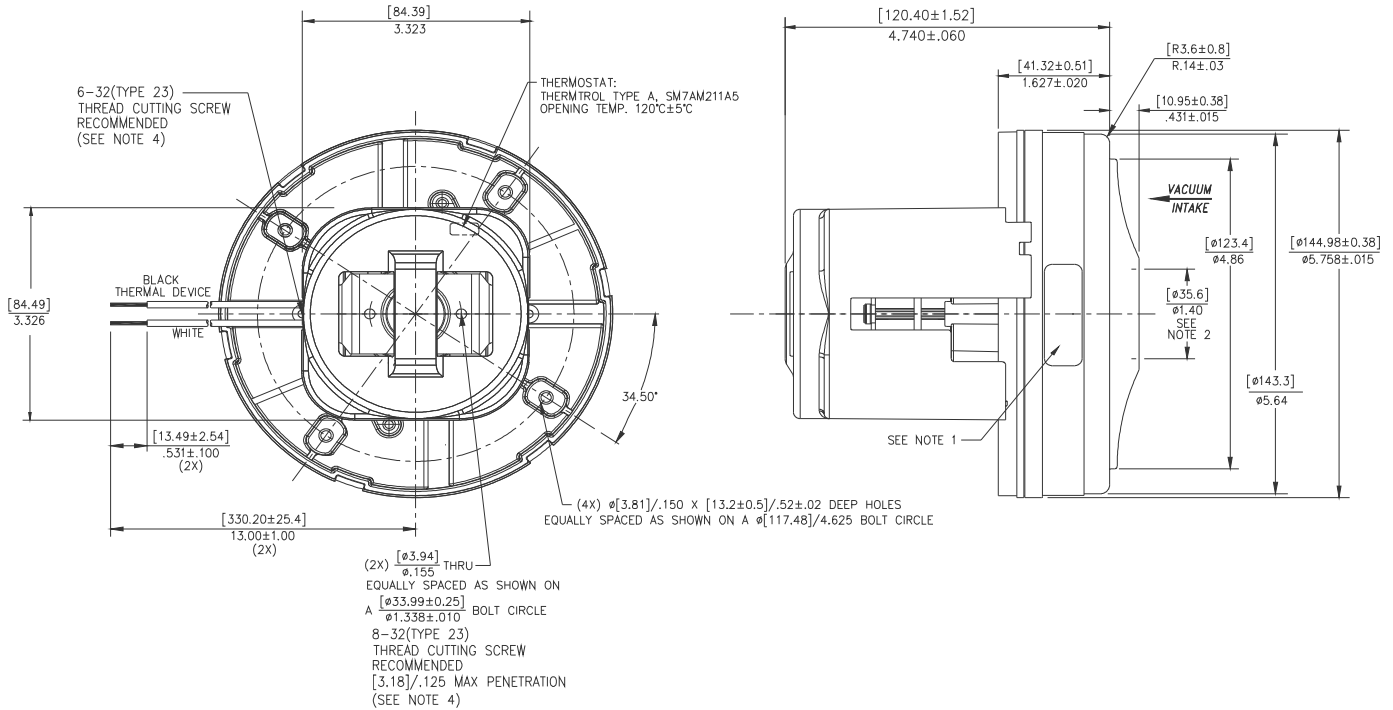
Test Specs:	240 volts	Minimum Sealed Vacuum:	60"	ORIFICE:	7/8"	Minimum Vacuum:	28"	Maximum Watts:	570
-------------	-----------	------------------------	-----	----------	------	-----------------	-----	----------------	-----



**DIMENSIONS**

NOTES:

1. MODEL NUMBER, DATE OF MANUFACTURE, PLANT LOCATION CODE, AGENCY RECOG... CODE, MANUFACTURER'S NAME, "US PATENT: US 6,703,754 B1", VOLTAGE AND FREQUENCY TO APPEAR ON MOTOR.
2. MOUNTING MUST NOT RESTRICT THIS DIAMETER.
3. LEADS: 18GA STRANDED.
4. GROUNDING OR EARTHING PROVISIONS: USE HOLES AS INDICATED FOR GROUNDING OR EARTHING. REFER TO APPROPRIATE LISTING OR REGULATORY AGENCY FOR PROPER METHOD OF GROUNDING OR EARTHING.



# ADVANTEK II

**IMPORTANT NOTE:** Pictorial and dimensional data are subject to change without notice. Contact factory for current revision levels.

**WARNING** - AMETEK Lamb Electric thru-flow vacuum motors must never be used in applications in which wet or moist conditions are involved, where dry chemicals or other volatile materials are present, or where airflow may be restricted or blocked. Such motors are designed to permit the vacuumed air to pass over the electrical winding to cool it. Thus any foam, liquid (including water), dry chemical, or other foreign substance coming in contact with electrical conductors could cause combustion (depending on volatility) or electrical shock. Failure to observe these precautions could result in property damage and severe personal injury, including death in extreme cases. All applications incorporating Lamb Electric motors should be submitted to Underwriters Laboratories Inc. or other appropriate organizations or agencies for testing specifically related to the safety of your equipment.

**AMETEK/Lamb Electric**  
**100 E. Erie Street**  
**Kent, Ohio 44240**  
**U.S.A.**  
**www.ametekfsm.com**