



Floorcare & Specialty Motors

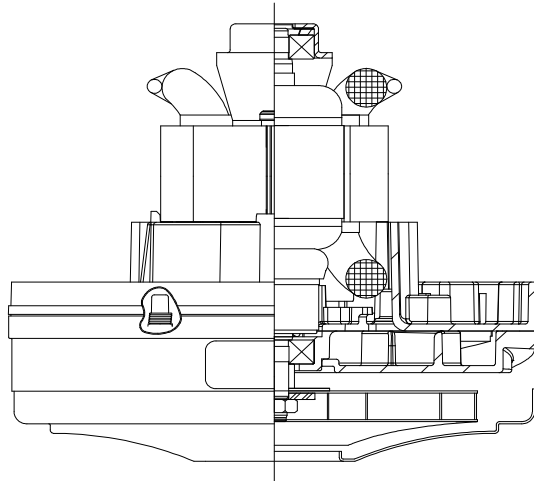
Model: 122314-00

SPECIAL FEATURES

- Suitable for 120 volt AC operation, 60 Hz
- UL recognized, category PRGY2 (E47185)
- "Eternity" (curved) Brush Mech
- Provision for grounding
- Skeleton-frame construction
- **Patented Advantek II diffusion**
- **Tapered high efficiency fan system**
- The Lamb vacuum motor line offers a wide range of performance levels to meet design needs

DESCRIPTION

- Single stage
- 120 volts
- 5.7"/145 mm diameter
- Double ball bearings
- Single speed
- Thru-flow discharge
- Thermo-set fan end bracket
- Stamped steel end bracket



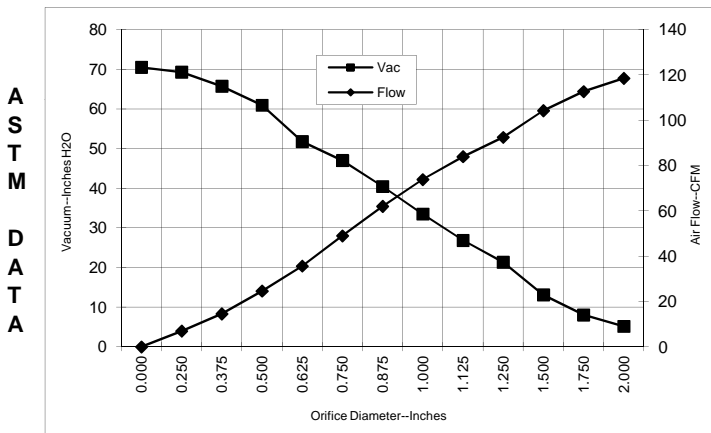
DESIGN APPLICATION

- Equipment operating in environments not requiring separation of working air from motor ventilating air
- Designed to handle clean, dry, filtered air only

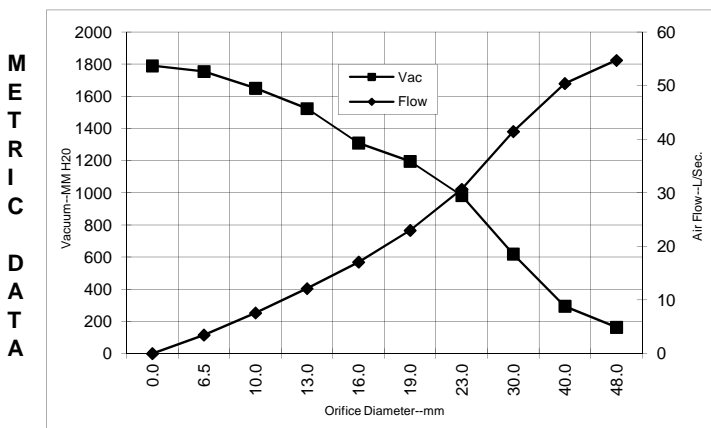


TYPICAL MOTOR PERFORMANCE.*

(At 120 volts, 60Hz, test data is corrected to standard conditions of 29.92 Hg, 68°F.)



Orifice (Inches)	Amps	Watts (In)	RPM	Vac (In.H ₂ O)	Flow (CFM)	Air Watts
2.000	6.8	473	22388	5.2	118.5	72
1.750	6.8	785	22386	8.1	112.7	107
1.500	6.7	783	22441	13.1	104.2	160
1.250	6.6	775	22731	21.3	92.5	232
1.125	6.5	767	23021	26.9	83.9	265
1.000	6.4	757	23313	33.5	73.9	290
0.875	6.1	739	23892	40.5	62.0	294
0.750	5.7	710	24709	47.0	49.0	270
0.625	5.3	670	25824	51.8	35.7	216
0.500	4.9	623	27028	60.9	24.6	176
0.375	4.5	575	28342	65.7	14.6	112
0.250	4.2	532	29640	69.3	7.0	57
0.000	4.0	498	30657	70.5	0.0	0



Orifice (mm)	Amps	Watts (In)	RPM	Vac (mm H ₂ O)	Flow (L/Sec)	Air Watts
48.0	6.8	610	22387	164	54.7	87
40.0	6.7	784	22425	295	50.4	144
30.0	6.6	771	22891	619	41.4	250
23.0	6.1	744	23747	983	30.7	293
19.0	5.7	709	24731	1196	23.0	269
16.0	5.3	672	25779	1310	17.1	218
13.0	4.9	628	26908	1524	12.1	180
10.0	4.6	582	28145	1651	7.6	122
6.5	4.2	534	29575	1755	3.5	60
0.0	4.0	498	30657	1790	0.0	0

Note: Metric Performance data is calculated from the ASTM data above.

* Data represents performance of a typical motor sampled from a large production quantity. Individual motor data may vary due to normal manufacturing variations.

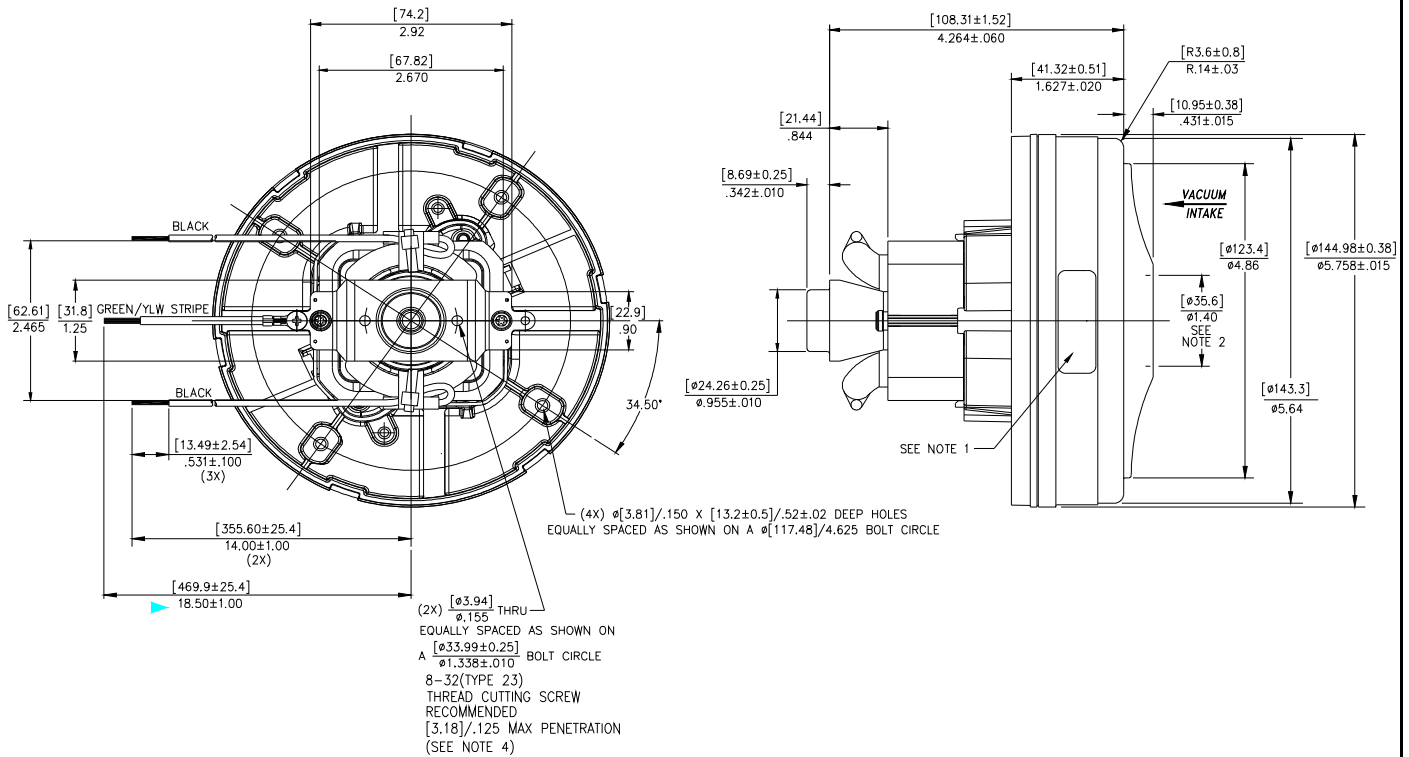
Test Specs:	120 volts	Minimum Sealed Vacuum:	66.0	ORIFICE:	7/8 "	Minimum Vacuum:	36.0	Maximum Watts:	769
--------------------	-----------	-------------------------------	------	-----------------	-------	------------------------	------	-----------------------	-----



DIMENSIONS

NOTES:

1. MODEL NUMBER, DATE OF MANUFACTURE, PLANT LOCATION CODE, AGENCY RECOGNITION CODE, INSPECTOR'S CODE, MANUFACTURER'S NAME, "US PATENT: US 6,703,754 B1", VOLTAGE AND FREQUENCY, AND CUSTOMER'S PART NO. TO APPEAR ON MOTOR.
2. MOUNTING MUST NOT RESTRICT THIS DIAMETER.
3. POWER LEADS: 18GA STRANDED, BLACK.
4. GROUND LEAD: 18 GA. STRANDED, GREEN OR GREEN WITH YELLOW STRIPE.



IMPORTANT NOTE: Pictorial and dimensional data are subject to change without notice. Contact factory for current revision levels.

WARNING - When using AMETEK Floorcare & Specialty Motors (F&SM) bypass motors in machines that come in contact with foam, liquid (including water), or other foreign substances, the machine must be designed and constructed to prevent those substances from reaching the fan system, motor housing, and electrical components. F&SM vacuum motors other than hazardous duty models should not be applied in machines that come in contact with dry chemicals or other volatile materials. Failure to observe these precautions could cause flashing (depending on volatility) or electrical shock which could result in property damage and severe bodily injury, including death in extreme cases. All applications incorporating F&SM motors should be submitted to appropriate organizations or agencies for testing specifically related to the safety of your equipment.

AMETEK/Floorcare & Specialty Motors
www.ametekfsm.com