



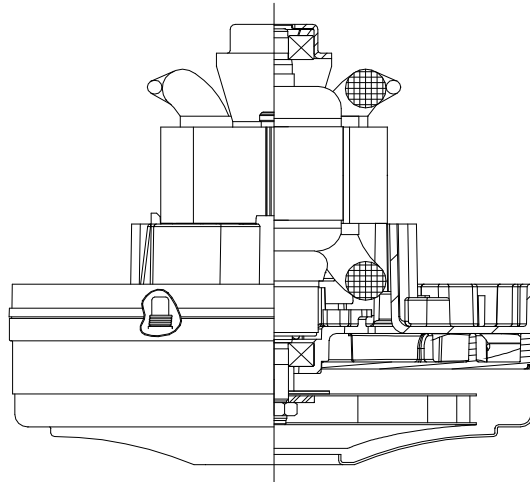
Advantek II - Plus

DESCRIPTION

- Single stage
- 240 volts
- 5.7"/145 mm diameter
- Double Ball bearing system
- Single speed
- Thru-flow discharge
- Thermo-set fan end bracket
- Stamped steel end bracket

DESIGN APPLICATION

- Equipment operating in environments not requiring separation of working air from motor ventilating air
- Designed to handle clean, dry, filtered air only



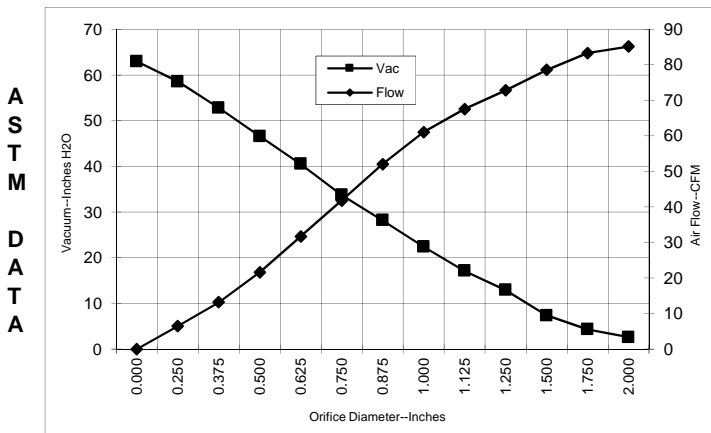
SPECIAL FEATURES

- Suitable for 240 volt AC operation, 50/60 Hz
- UL recognized, category PRGY2 (E47185)
- Provision for grounding per UL 1563
- CSA certified, class 1611 01 (LR31393)
- Skeleton-frame construction
- **Patented Advantek diffusion system**
- **Tapered high efficiency fan system**
- **Self Hold thermal device**

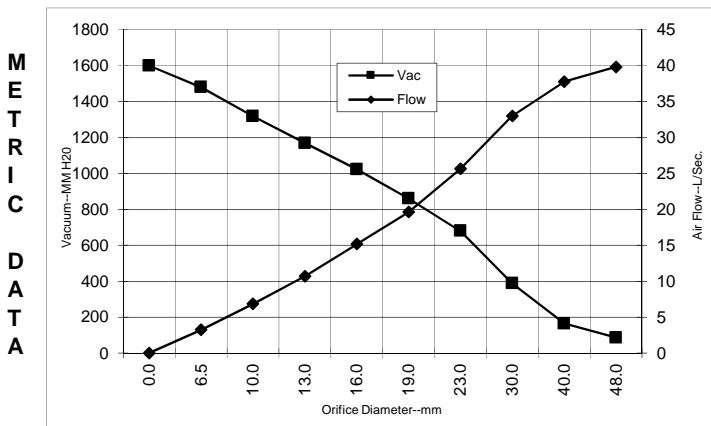


TYPICAL MOTOR PERFORMANCE.*

(At 240 volts, 60Hz, test data is corrected to standard conditions of 29.92 Hg, 68° F.)



Orifice (Inches)	Amps	Watts (In)	RPM	Vac (In.H ₂ O)	Flow (CFM)	Air Watts
2.000	2.0	458	20200	2.6	85.2	26
1.750	2.0	458	20200	4.3	83.3	42
1.500	2.0	459	20180	7.4	78.6	68
1.250	2.0	457	20210	12.9	72.8	111
1.125	2.0	453	20310	17.2	67.6	137
1.000	2.0	452	20380	22.5	61.1	161
0.875	1.9	443	20640	28.2	52.1	173
0.750	1.8	428	21050	33.7	41.8	166
0.625	1.8	409	21810	40.5	31.7	151
0.500	1.7	386	22760	46.6	21.7	119
0.375	1.5	359	23980	52.8	13.2	82
0.250	1.4	340	25370	58.6	6.5	45
0.000	1.3	318	26770	63.0	0.0	0



Orifice (mm)	Amps	Watts (In)	RPM	Vac (mm H ₂ O)	Flow (L/Sec)	Air Watts
48.0	2.0	458	20200	86	39.8	33
40.0	2.0	459	20186	164	37.8	61
30.0	2.0	455	20265	387	33.0	125
23.0	1.9	445	20575	680	25.6	170
19.0	1.8	428	21065	860	19.6	166
16.0	1.8	410	21780	1023	15.2	152
13.0	1.7	388	22665	1168	10.7	122
10.0	1.5	363	23797	1318	6.8	88
6.5	1.4	341	25301	1480	3.2	47
0.0	1.3	318	26770	1599	0.0	0

Note: Metric Performance data is calculated from the ASTM data above.

* Data represents performance of a typical motor sampled from a large production quantity. Individual motor data may vary due to normal manufacturing variations.

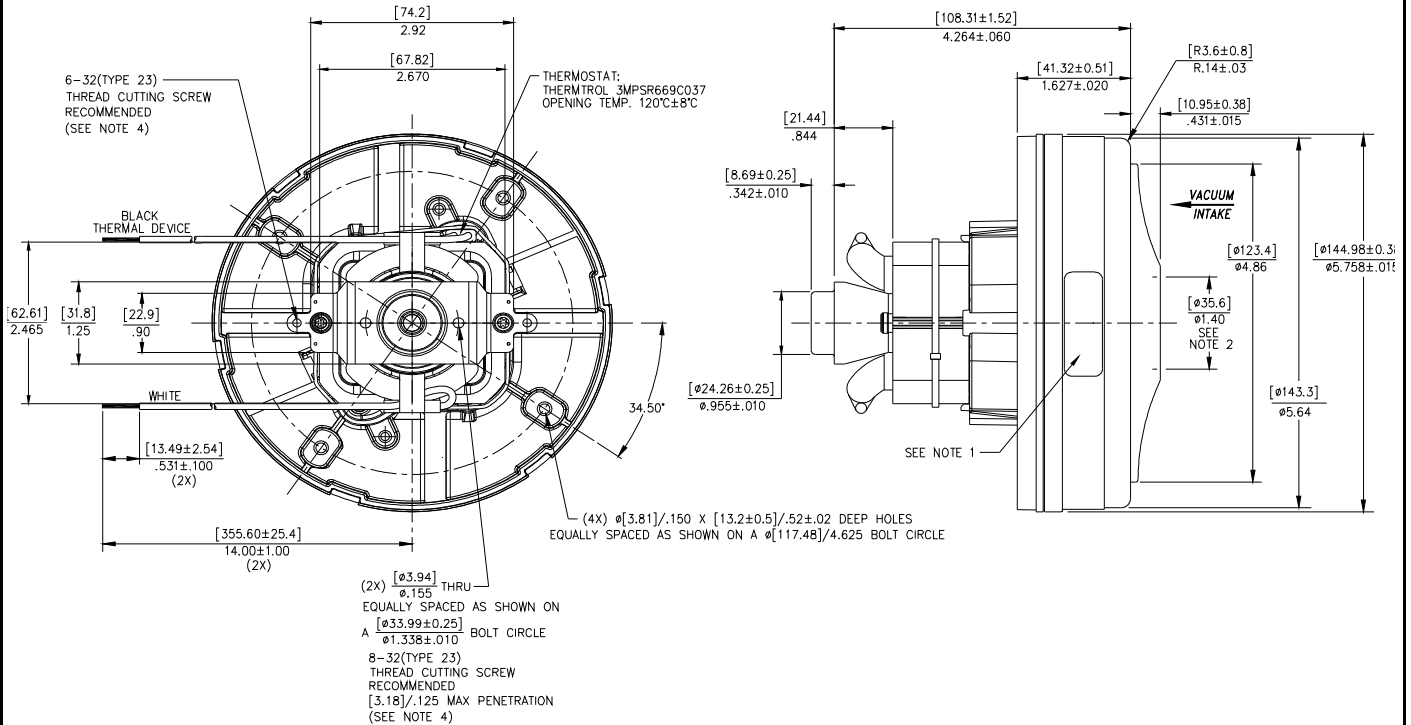
Test Specs:	240 volts	Minimum Sealed Vacuum:	60.0	ORIFICE:	7/8 "	Minimum Vacuum:	28.0	Maximum Watts:	570
-------------	-----------	------------------------	------	----------	-------	-----------------	------	----------------	-----



DIMENSIONS

NOTES:

1. MODEL NUMBER, DATE OF MANUFACTURE, PLANT LOCATION CODE, AGENCY RECOGNITION CODE, INSPECTOR'S CODE, MANUFACTURER'S NAME, "US PATENT: US 6,703,754 B1", VOLTAGE AND FREQUENCY, AND CUSTOMER'S PART NO. TO APPEAR ON MOTOR.
2. MOUNTING MUST NOT RESTRICT THIS DIAMETER.
3. LEADS: 18GA STRANDED.
4. GROUNDING OR EARTHING PROVISIONS: USE HOLES AS INDICATED FOR GROUNDING OR EARTHING. REFER TO APPROPRIATE LISTING OR REGULATORY AGENCY FOR PROPER METHOD OF GROUNDING OR EARTHING.



IMPORTANT NOTE: Pictorial and dimensional data are subject to change without notice. Contact factory for current revision levels.

WARNING - AMETEK Lamb Electric thru-flow vacuum motors must never be used in applications in which wet or moist conditions are involved, where dry chemicals or other volatile materials are present, or where airflow may be restricted or blocked. Such motors are designed to permit the vacuumed air to pass over the electrical winding to cool it. Thus any foam, liquid (including water), dry chemical, or other foreign substance coming in contact with electrical conductors could cause combustion (depending on volatility) or electrical shock. Failure to observe these precautions could result in property damage and severe personal injury, including death in extreme cases. All applications incorporating Lamb Electric motors should be submitted to Underwriters Laboratories Inc. or other appropriate organizations or agencies for testing specifically related to the safety of your equipment.

AMETEK/Dynamic Fluid Solutions
www.ametekdfs.com