

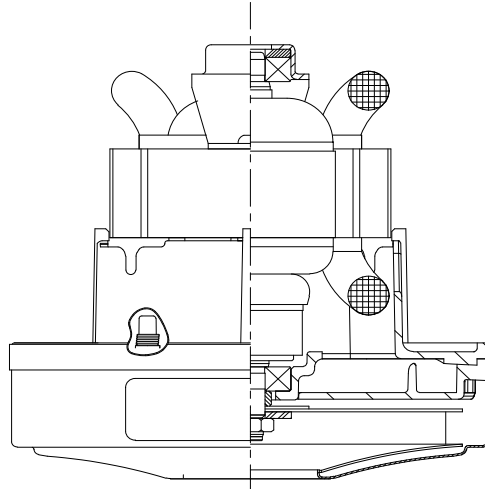


DESCRIPTION

- One stage
- 240 volts
- 5.1"145 mm diameter
- Double ball bearings
- Single speed
- Thru-flow discharge
- Thermoset fan/comm end bracket
- Stamped Steel End Bracket

DESIGN APPLICATION

- Equipment operating in environments not requiring separation of working air from motor ventilating air
- Designed to handle clean, dry, filtered air only



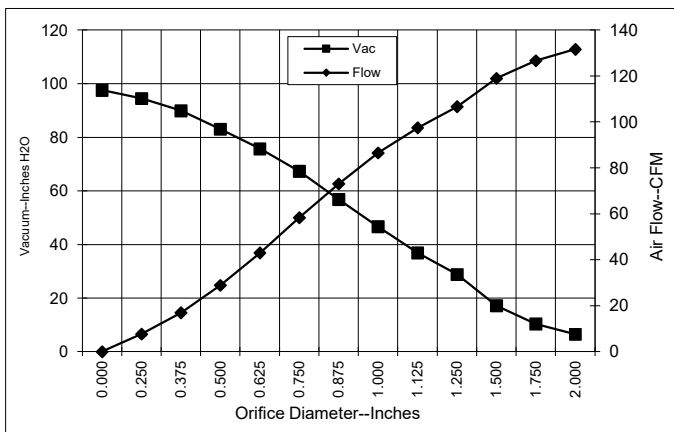
SPECIAL FEATURES

- Suitable for 240 volt AC operation, 50/60 Hz
- UL recognized, category PRGY2 (E47185)
- Provision for grounding
- Skeleton-frame design
- Thermal Device
- Choke Coils
- The Lamb Electric vacuum motor line offers a wide range of performance levels to meet design needs

TYPICAL MOTOR PERFORMANCE.*

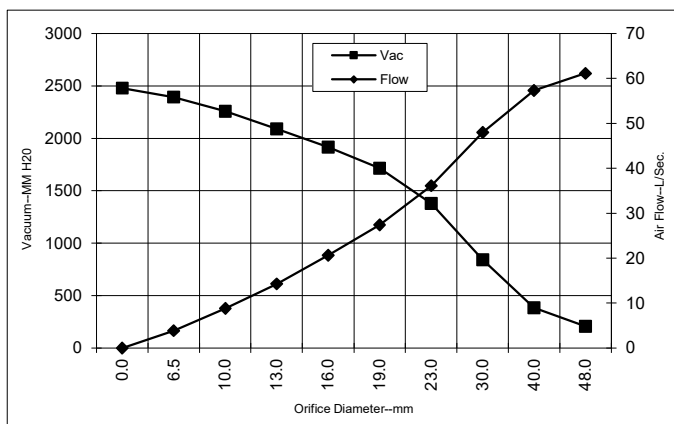
(At 240 volts, 60Hz, test data is corrected to standard conditions of 29.92 Hg, 68° F.)

ASTM DATA



Orifice (Inches)	Amps	Watts (In)	RPM	Vac (In.H2O)	Flow (CFM)	Air Watts
2.000	6.5	1493	25175	6.4	131.7	100
1.750	6.4	1484	25245	10.3	126.7	154
1.500	6.4	1479	25370	17.1	119.0	239
1.250	6.3	1448	25665	28.8	106.6	361
1.125	6.2	1429	25925	36.8	97.5	422
1.000	6.0	1377	26460	46.7	86.6	475
0.875	5.7	1312	27255	56.8	73.1	488
0.750	5.2	1220	28190	67.3	58.4	462
0.625	4.9	1132	29315	75.8	43.0	383
0.500	4.5	1042	30640	83.0	28.8	281
0.375	4.2	974	31715	89.9	16.9	179
0.250	3.9	921	32825	94.5	7.7	86
0.000	3.8	884	33670	97.6	0.0	0

METRIC DATA



Orifice (mm)	Amps	Watts (In)	RPM	Vac (mm H2O)	Flow (L/Sec)	Air Watts
48.0	6.4	1489	25206	207	61.1	124
40.0	6.4	1480	25333	383	57.3	214
30.0	6.2	1437	25808	843	47.9	394
23.0	5.7	1328	27056	1378	36.1	485
19.0	5.2	1218	28213	1713	27.4	461
16.0	4.9	1135	29270	1915	20.6	386
13.0	4.5	1051	30508	2090	14.3	292
10.0	4.2	984	31554	2258	8.8	194
6.5	3.9	923	32770	2394	3.9	90
0.0	3.8	884	33670	2478	0.0	0

Note: Metric performance data is calculated from the ASTM data above.

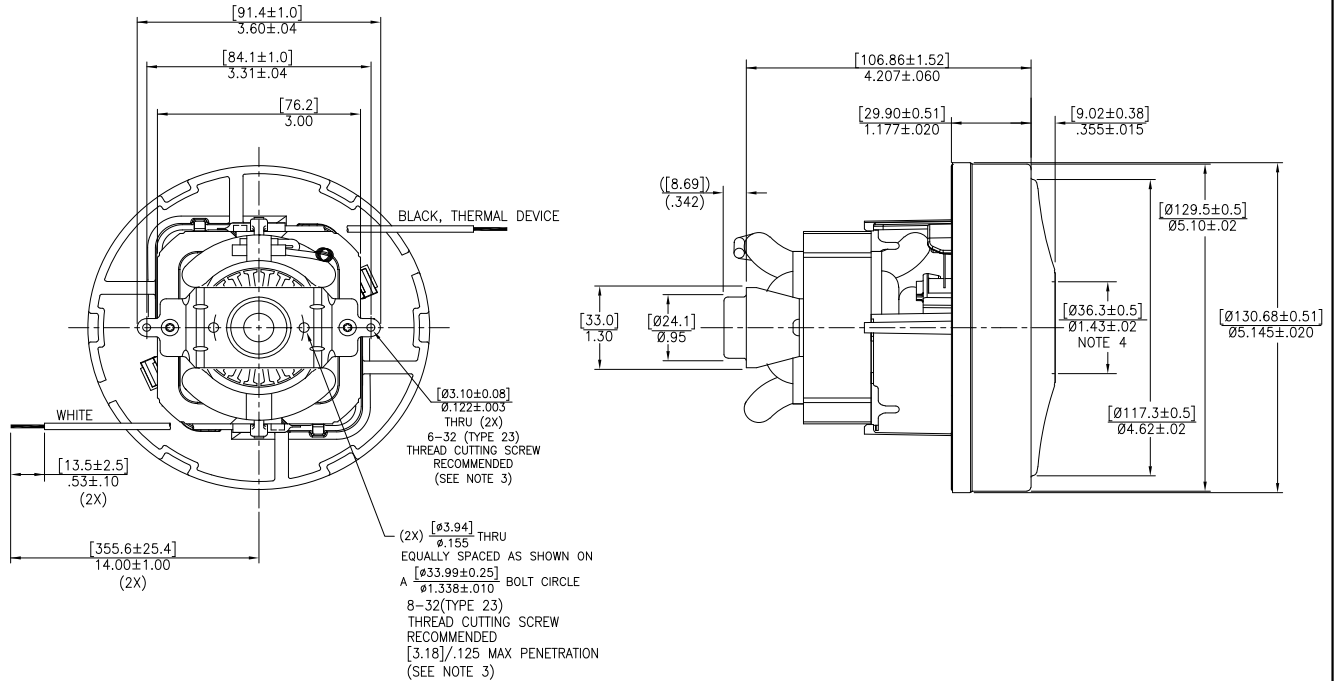
* Data represents performance of a typical motor sampled from a large production quantity. Individual motor data may vary due to normal manufacturing variations.

Test Specs:	240 volts	Minimum Sealed Vacuum: 87	ORIFICE:	7/8"	Minimum Vacuum: 51"	Maximum Watts:	1340
--------------------	-----------	----------------------------------	-----------------	------	----------------------------	-----------------------	------

DIMENSIONS

NOTES:

1. LEADS: 18 GA. STRANDED.
2. MOTOR IDENTIFICATION: MANUFACTURER'S NAME, MODEL NUMBER, VOLTAGE, FREQUENCY, INSPECTORS CODE WITH "FF" SUFFIX, DATE OF MANUFACTURE, AGENCY RECOGNITION CODE, PLANT LOCATION CODE, "PATENT PENDING" AND COUNTRY OF ORIGIN.
3. GROUNDING OR EARTHING PROVISIONS: USE HOLES AS INDICATED FOR GROUNDING OR EARTHING. REFER TO APPROPRIATE LISTING OR REGULATORY AGENCY FOR PROPER METHOD OF GROUNDING OR EARTHING.
4. MOUNTING MUST NOT RESTRICT THIS DIAMETER.



IMPORTANT NOTE: *Pictorial and dimensional data are subject to change without notice. Contact factory for current revision levels.*

WARNING - AMETEK Lamb Electric thru-flow vacuum motors must never be used in applications in which wet or moist conditions are involved, where dry chemicals or other volatile materials are present, or where airflow may be restricted or blocked. Such motors are designed to permit the vacuumed air to pass over the electrical winding to cool it. Thus any foam, liquid (including water), dry chemical, or other foreign substance coming in contact with electrical conductors could cause combustion (depending on volatility) or electrical shock. Failure to observe these precautions could result in property damage and severe personal injury, including death in extreme cases. All applications incorporating Lamb Electric motors should be submitted to Underwriters Laboratories Inc. or other appropriate organizations or agencies for testing specifically related to the safety of your equipment.

AMETEK/Dynamic Fluid Solutions
www.ametekdfs.com

Revised April 2021