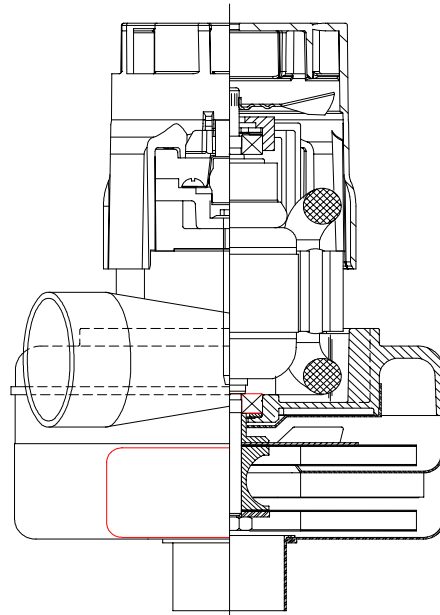




**SPECIAL FEATURES**

- Suitable for 24 volt DC operation
- UL Recognized, category PRGY2 (E47185)
- Provision for grounding
- 1.50" inlet tube diameter x 1.0" long
- Skeleton-frame design
- Epoxy painted fan case
- Patented air seal bearing construction. U.S. Patent #4,088,424
- Patented low-noise vent fan & housing
- The Lamb Electric vacuum motor line offers a wide range of performance levels to meet design needs.



**DESCRIPTION**

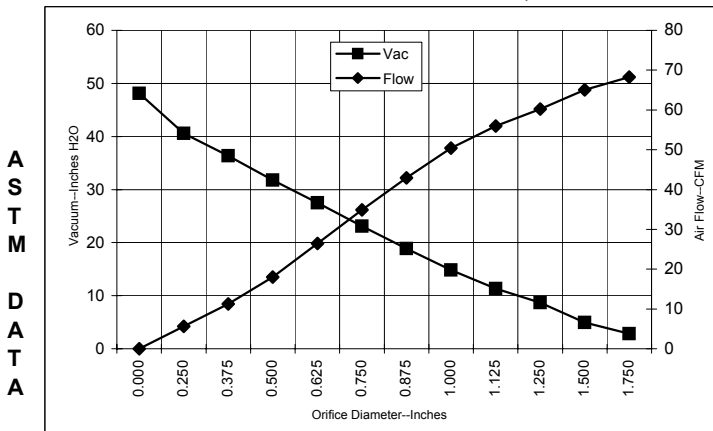
- Two stage
- 24 Volts
- 5.7"/145 mm diameter
- Double ball bearings
- Single speed
- Tangential bypass discharge
- Thermoset fan end bracket
- Aluminum commutator bracket

**DESIGN APPLICATION**

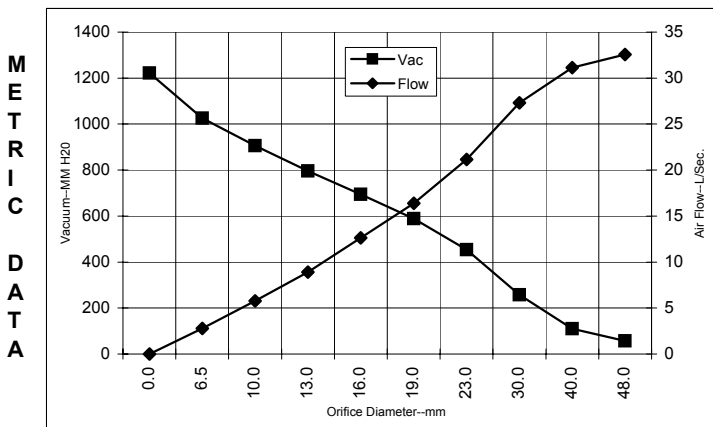
- Equipment operating in environments requiring separation of working air from motor ventilating air
- Designed to handle clean, dry, filtered air only

**TYPICAL MOTOR PERFORMANCE.\***

(At 24 volts DC, test data is corrected to standard conditions of 29.92 Hg, 68° F.)



Orifice (Inches)	Amps	Watts (In)	RPM	Vac (In.H <sub>2</sub> O)	Flow (CFM)	Air Watts
2.000	16.8	402	12575	1.7	69.6	14
1.750	16.7	402	12550	2.9	68.3	23
1.500	16.8	402.5	12545	4.9	65.0	38
1.250	16.8	403.5	12485	8.7	60.2	61
1.125	16.8	404	12505	11.4	55.9	75
1.000	16.7	400	12560	14.9	50.4	88
0.875	16.4	393	12715	18.9	42.9	95
0.750	15.9	381.5	12965	23.1	34.9	95
0.625	15.2	365	13375	27.5	26.4	85
0.500	14.5	348	13895	31.8	18.0	67
0.375	13.7	328.5	14490	36.4	11.2	48
0.250	13.0	311	15085	40.6	5.6	27
0.000	12.3	295	15810	48.1	0.0	0



Orifice (mm)	Amps	Watts (In)	RPM	Vac (mm H <sub>2</sub> O)	Flow (L/Sec)	Air Watts
48.0	16.7	402	12564	57	32.6	18
40.0	16.8	402	12547	110	31.1	33
30.0	16.8	404	12496	258	27.3	69
23.0	16.4	395	12676	454	21.1	93
19.0	15.9	381	12973	588	16.4	94
16.0	15.2	366	13359	694	12.6	86
13.0	14.6	350	13843	796	8.9	69
10.0	13.8	331	14401	906	5.8	51
6.5	13.0	312	15055	1025	2.8	28
0.0	12.3	295	15810	1222	0.0	0

Note: Metric performance data is calculated from the ASTM data above.

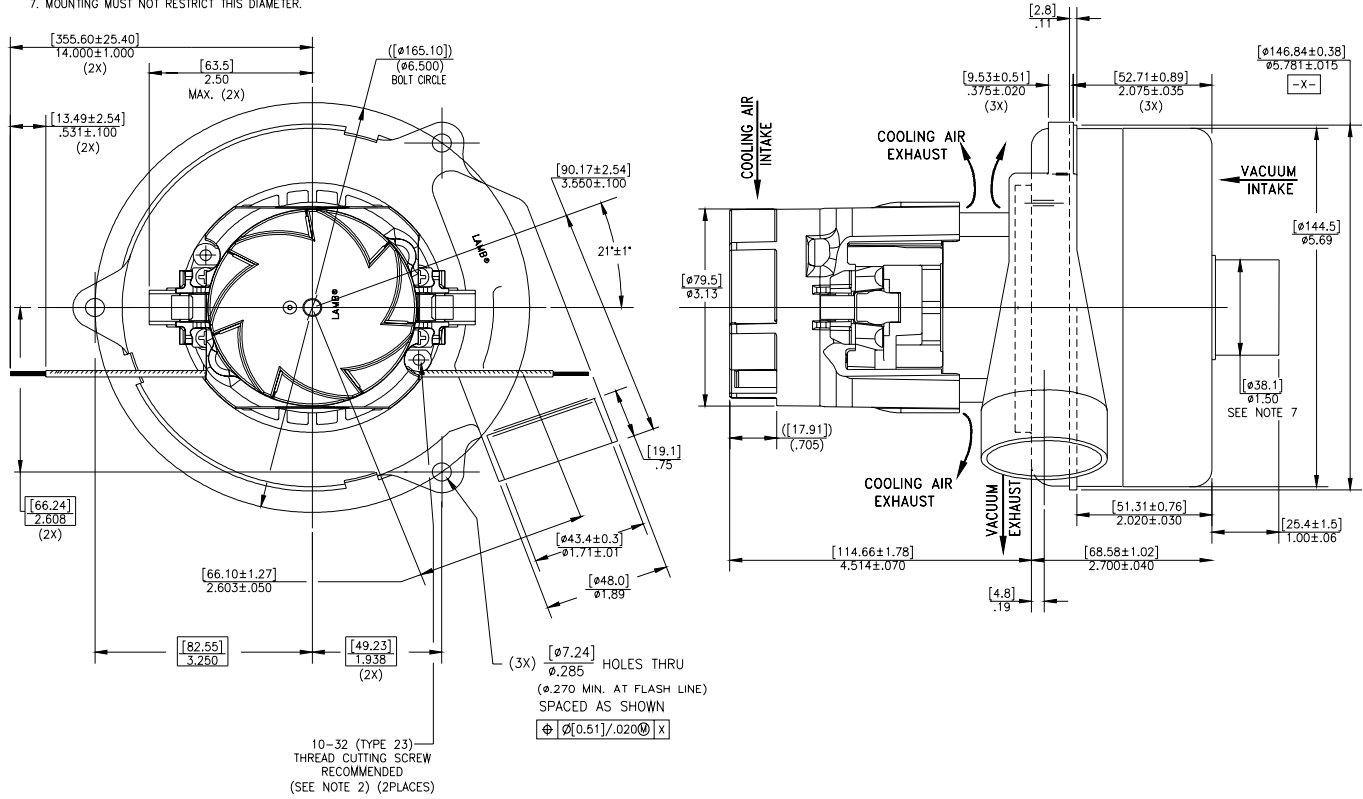
\* Data represents performance of a typical motor sampled from a large production quantity. Individual motor data may vary due to normal manufacturing variations.

<b>Test Specs:</b>	24 volts	<b>Minimum Sealed Vacuum:</b>	41.4"	<b>ORIFICE:</b>	7/8 "	<b>Minimum Vacuum:</b>	17.0"	<b>Maximum Watts:</b>	460
--------------------	----------	-------------------------------	-------	-----------------	-------	------------------------	-------	-----------------------	-----

**DIMENSIONS**

NOTES:

1. LEADS: 14GA STRANDED, LEADS CAN BE ANY COLOR EXCEPT GREEN OR GREEN WITH YELLOW STRIPE.
2. GROUNDING OR EARTHING PROVISIONS: USE HOLES AS INDICATED FOR GROUNDING OR EARTHING. REFER TO APPROPRIATE LISTING OR REGULATORY AGENCY FOR PROPER METHOD OF GROUNDING OR EARTHING.
3. MOTOR IDENTIFICATION: MANUFACTURER'S NAME, MODEL NUMBER, VOLTAGE, FREQUENCY, INSPECTORS CODE, DATE OF MANUFACTURE, AGENCY RECOGNITION CODE, PLANT LOCATION CODE, PATENT INFORMATION ONE OR MORE OF THE FOLLOWING PATENTS APPLY TO THIS MOTOR: 5482378; 5735805; 4669952; 4684835; 6561772. AND COUNTRY OF ORIGIN.
4. ALLOW [0.0016 SQ M]/2.5 SQ IN. MIN. FOR COOLING AIR INTAKE.
5. COOLING AIR INTAKE MUST BE SEPARATED FROM COOLING AIR EXHAUST.
6. VACUUM EXHAUST MUST BE SEPARATED FROM COOLING EXHAUST.
7. MOUNTING MUST NOT RESTRICT THIS DIAMETER.



**IMPORTANT NOTE:** Pictorial and dimensional data are subject to change without notice. Contact factory for current revision levels.

**WARNING** - When using AMETEK Lamb Electric bypass motors in machines that come in contact with foam, liquid (including water), or other foreign substances, the machine must be designed and constructed to prevent those substances from reaching the fan system, motor housing, and electrical components. Lamb Electric vacuum motors other than hazardous duty models should not be applied in machines that come in contact with dry chemicals or other volatile materials. Failure to observe these precautions could cause flashing (depending on volatility) or electrical shock which could result in property damage and severe bodily injury, including death in extreme cases. All applications incorporating Lamb Electric motors should be submitted to appropriate organizations or agencies for testing specifically related to the safety of your equipment.

**AMETEK/Lamb Electric Division**  
 627 Lake Street  
 Kent, Ohio 44240  
 U.S.A.  
 Tel: (330) 673-3786 Fax: (330) 677-3812  
 www.lambelectric.com