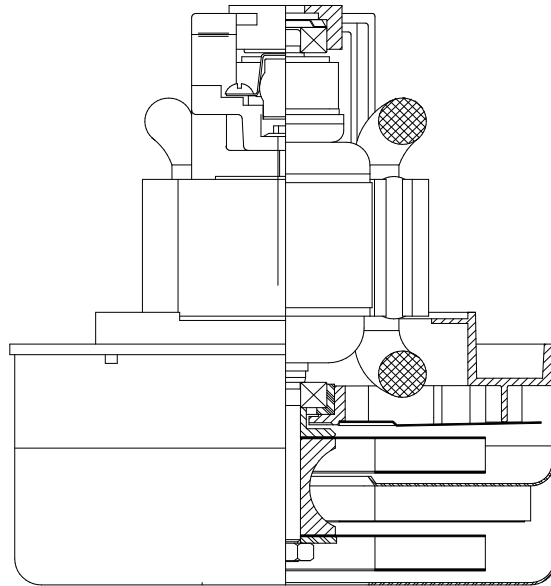


DESCRIPTION

- Two stage
- 230 volts
- 5.7"/145 mm diameter
- Double ball bearings
- Single speed
- Thru-flow discharge
- Aluminum fan end bracket
- Aluminum commutator bracket

DESIGN APPLICATION

- Equipment operating in environments requiring separation of working air from motor ventilating air.
- Designed to handle clean, dry, filtered air only.

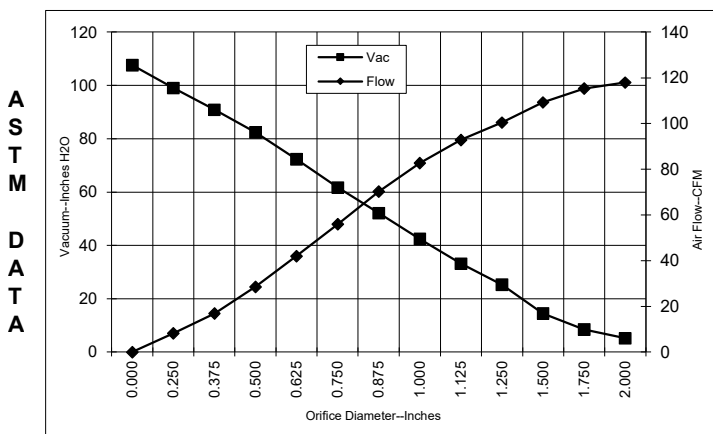


SPECIAL FEATURES

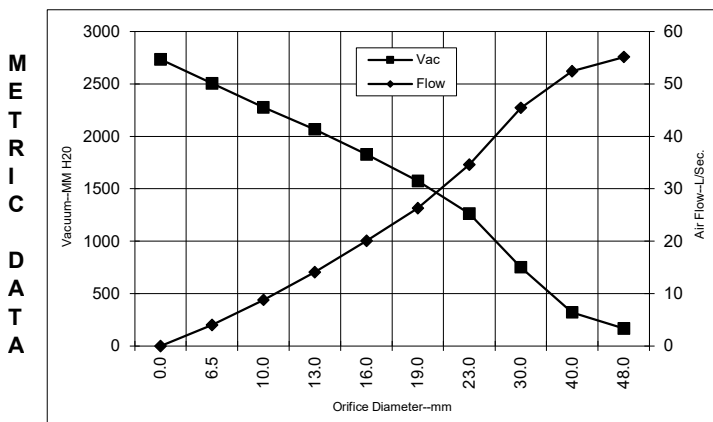
- Suitable for 230 volt AC operation, 60 Hz
- UL recognized, category PRGY2 (E47185)
- Provision for grounding
- Skeleton-frame construction
- High air flow fan system
- The Lamb Electric vacuum motor line offers a wide range of performance levels to meet design needs

TYPICAL MOTOR PERFORMANCE.*

(At 230 volts, 60Hz, test data is corrected to standard conditions of 29.92 Hg, 68° F.)



Orifice (Inches)	Amps	Watts (In)	RPM	Vac (In.H ₂ O)	Flow (CFM)	Air Watts
2.000	6.1	1338	19521	5.1	118.0	71
1.750	6.1	1334	19511	8.5	115.3	114
1.500	6.1	1334	19525	14.4	109.2	185
1.250	6.1	1332	19565	25.3	100.4	298
1.125	6.0	1318	19632	33.2	92.8	361
1.000	5.9	1298	19808	42.5	82.7	412
0.875	5.7	1247	20185	52.1	70.2	429
0.750	5.4	1186	20773	61.7	55.9	405
0.625	5.0	1101	21594	72.3	41.9	356
0.500	4.6	1011	22608	82.4	28.5	276
0.375	4.2	929	23697	90.9	16.9	180
0.250	3.8	854	24877	99.0	8.1	94
0.000	3.5	794	25989	107.6	0.0	0



Orifice (mm)	Amps	Watts (In)	RPM	Vac (mm H ₂ O)	Flow (L/Sec)	Air Watts
48.0	6.1	1336	19516	168	55.1	90
40.0	6.1	1334	19520	321	52.4	164
30.0	6.1	1324	19602	752	45.4	333
23.0	5.8	1260	20090	1263	34.6	425
19.0	5.4	1184	20790	1572	26.3	404
16.0	5.0	1104	21561	1827	20.1	358
13.0	4.6	1020	22507	2067	14.1	284
10.0	4.2	941	23534	2276	8.8	195
6.5	3.8	857	24818	2504	4.0	99
0.0	3.5	794	25989	2733	0.0	0

Note: Metric performance data is calculated from the ASTM data above.

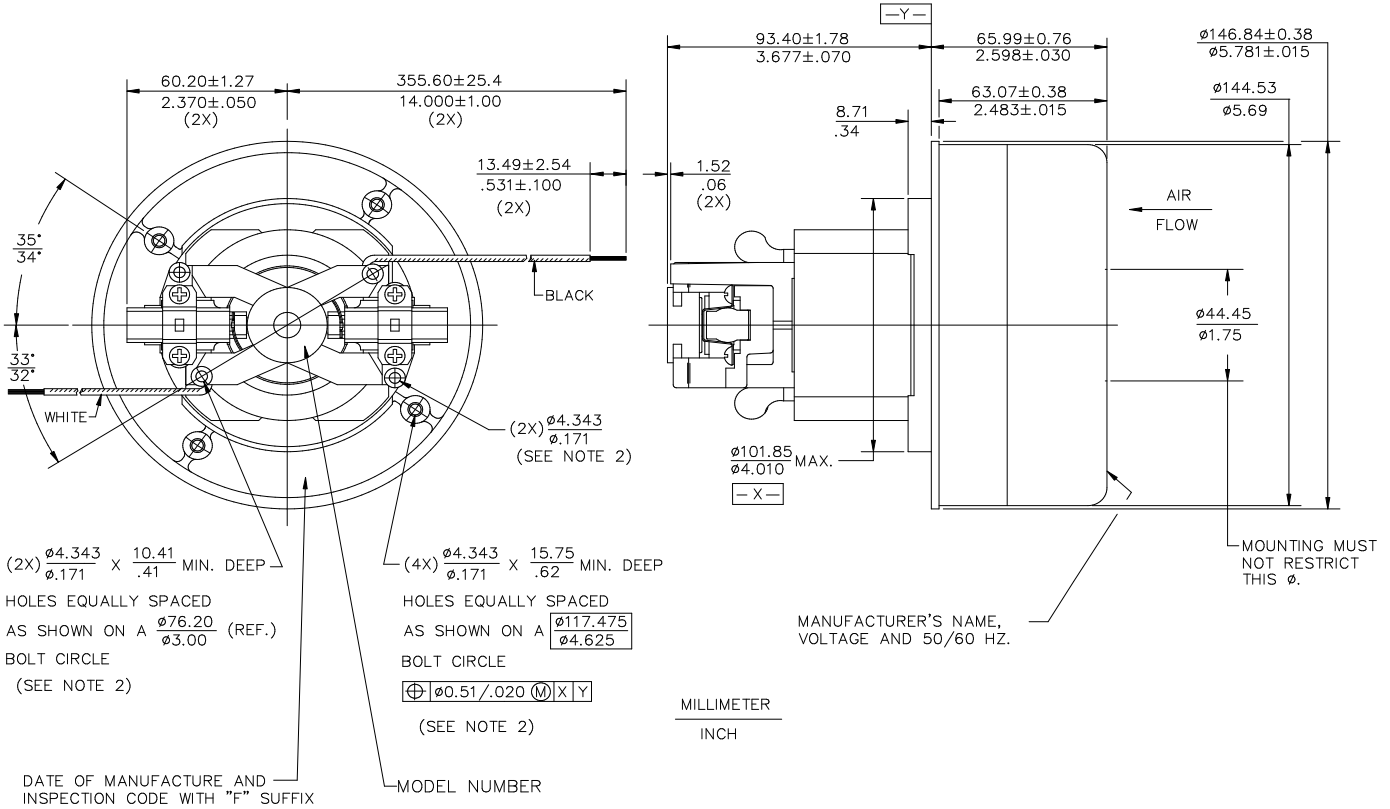
* Data represents performance of a typical motor sampled from a large production quantity. Individual motor data may vary due to normal manufacturing variations.

Test Specs:	230 volt	Minimum Sealed Vacuum: 97"	ORIFICE:	7/8 "	Minimum Vacuum: 50"	Maximum Watts:	1325
-------------	----------	----------------------------	----------	-------	---------------------	----------------	------

DIMENSIONS

NOTES:

1. LEADS: 18GA STRANDED.
2. GROUNDING OR EARTHING PROVISIONS: USE HOLES AS INDICATED FOR GROUNDING OR EARTHING. REFER TO APPROPRIATE LISTING OR REGULATORY AGENCY FOR PROPER METHOD OF GROUNDING OR EARTHING.



IMPORTANT NOTE: Pictorial and dimensional data are subject to change without notice. Contact factory for current revision levels.

WARNING - When using AMETEK Lamb Electric bypass motors in machines that come in contact with foam, liquid (including water), or other foreign substances, the machine must be designed and constructed to prevent those substances from reaching the fan system, motor housing, and electrical components. Lamb Electric vacuum motors other than hazardous duty models should not be applied in machines that come in contact with dry chemicals or other volatile materials. Failure to observe these precautions could cause flashing (depending on volatility) or electrical shock which could result in property damage and severe bodily injury, including death in extreme cases. All applications incorporating Lamb Electric motors should be submitted to appropriate organizations or agencies for testing specifically related to the safety of your equipment.

Bison, an AMETEK business.
 100 East Erie St. Suite 200
 Kent, OH USA 44240
BisonAMETEK.com