



AMETEK
LAMB ELECTRIC

Product Bulletin

Model: 119512-00

SPECIAL FEATURES

- Suitable for 120 volt AC operation, 50/60 Hz
 - UL recognized, category PRGY2 (E47185)
 - Provision for grounding
 - Skeleton frame design
 - Tapered fan system
- The Lamb vacuum motor line offers a wide range of performance levels to meet design needs

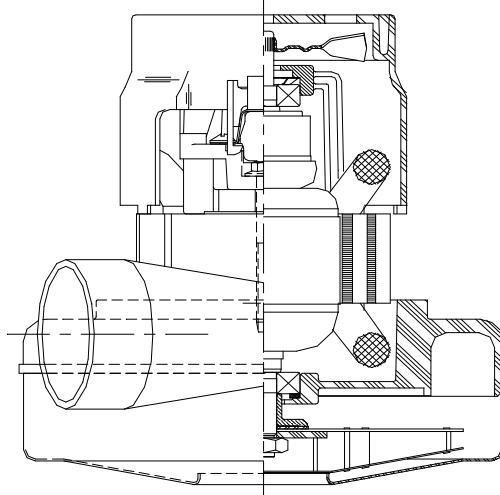


DESCRIPTION

- Single stage
- 120 volts
- 5.7" / 145 mm diameter
- Dual ball bearings
- Single speed
- Tangential bypass discharge
- Thermoset fan end bracket
- Aluminum commutator bracket

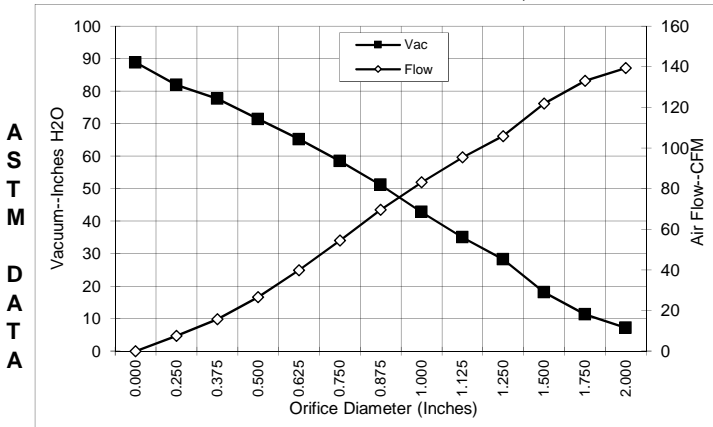
DESIGN APPLICATION

- Equipment operating in environments requiring separation of working air from motor ventilating air
- Designed to handle clean, dry, filtered air only

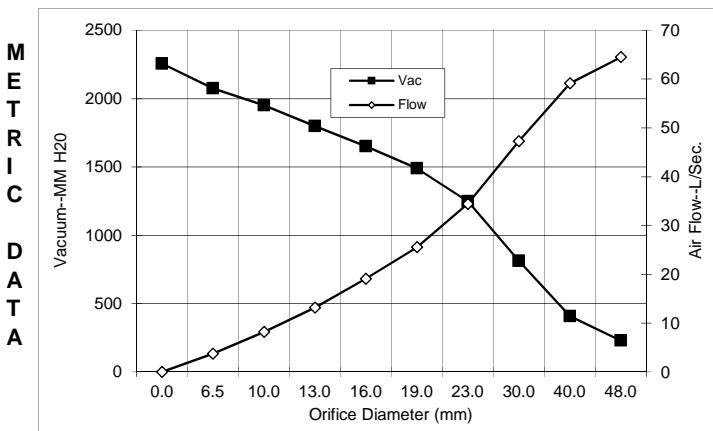


TYPICAL MOTOR PERFORMANCE.*

(At 120 volts, 60Hz, test data is corrected to standard conditions of 29.92 Hg, 68° F.)



Orifice (Inches)	Amps	Watts (In)	RPM	Vac (In.H2O)	Flow (CFM)	Air Watts
2.000	12.1	1397	26233	7.2	139.4	119
1.750	12.2	1410	26110	11.3	133.0	178
1.500	12.3	1421	25960	18.1	121.9	259
1.250	12.2	1407	26110	28.2	105.9	351
1.125	12.0	1384	26383	35.0	95.4	393
1.000	11.7	1346	26766	42.8	83.1	418
0.875	11.2	1297	27360	51.2	69.6	419
0.750	10.7	1235	28040	58.5	54.5	375
0.625	10.0	1162	29006	65.2	39.9	306
0.500	9.3	1081	30093	71.4	26.6	223
0.375	8.5	998	31460	77.7	15.7	143
0.250	8.0	932	32580	81.9	7.5	72
0.000	7.6	888	33423	88.8	0.0	0



Orifice (mm)	Amps	Watts (In)	RPM	Vac (mm H2O)	Flow (L/Sec)	Air Watts
48.0	12.1	1403	26179	229	64.5	145
40.0	12.3	1418	26005	408	59.1	235
30.0	12.1	1394	26260	811	47.3	374
23.0	11.3	1309	27212	1247	34.4	419
19.0	10.7	1234	28059	1489	25.6	374
16.0	10.0	1165	28967	1649	19.1	309
13.0	9.4	1089	29984	1798	13.2	231
10.0	8.6	1010	31255	1950	8.2	155
6.5	8.0	935	32524	2075	3.7	76
0.0	7.6	888	33423	2256	0.0	0

Note: Metric performance data is calculated from the ASTM data above.

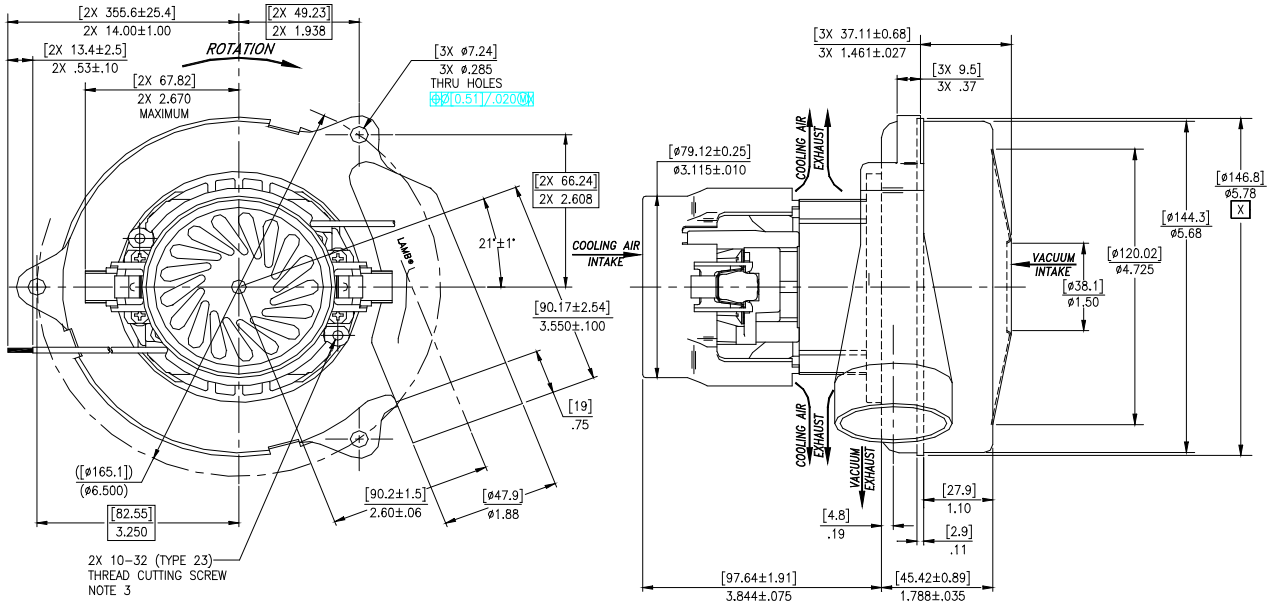
* Data represents performance of a typical motor sampled from a large production quantity. Individual motor data may vary to normal manufacturing variations.

Test Specs:	120v	Minimum Sealed Vacuum:	79.0"	ORIFICE:	7/8"	Minimum Vacuum:	45.0"	Maximum Watts:	1420
--------------------	------	-------------------------------	-------	-----------------	------	------------------------	-------	-----------------------	------

DIMENSIONS

NOTES:

1. LEADS: 18 GA. STRANDED. LEADS CAN BE ANY COLOR EXCEPT GREEN OR GREEN WITH YELLOW STRIPE.
2. MOUNTING MUST NOT RESTRICT THIS DIAMETER.
3. GROUNDING OR EARTHING: USE HOLES AS INDICATED FOR GROUNDING OR EARTHING. REFER TO APPROPRIATE LISTING OR REGULATORY AGENCY FOR PROPER METHOD OF GROUNDING OR EARTHING.



NOTES: CONTINUED

4. MANUFACTURER'S NAME, MODEL NUMBER, VOLTAGE, FREQUENCY, INSPECTORS CODE, DATE OF MANUFACTURE, AGENCY RECOGNITION CODE, PLANT LOCATION CODE, PATENT INFORMATION: "ONE OR MORE OF THE FOLLOWING PATENTS APPLY TO THIS MOTOR: 5482378; 5736805; 4669952; 4684835." AND "MADE IN THE USA".
5. ALLOW $[0.0016 \text{ SQUARE M}]/2.5 \text{ SQUARE INCHES}$ FOR COOLING AIR INTAKE.
6. VACUUM EXHAUST MUST BE SEPERATED FROM COOLING AIR EXHAUST.
7. COOLING AIR INTAKE MUST BE SEPERATED FROM COOLING AIR EXHAUST.

IMPORTANT NOTE: Pictorial and dimensional data are subject to change without notice. Contact factory for current revision levels.

WARNING - When using AMETEK/Lamb Electric bypass motors in machines that come in contact with foam, liquid (including water) of other foreign substances, the machine must be designed and constructed to prevent those substances from reaching the fan system, motor housing and electrical components. Lamb vacuum motors other than hazardous duty models should not be applied in machines that come in contact with dry chemicals or other volatile materials. Failure to observe these precautions could cause flashing (depending on volatility) or electrical shock which could result in property damage and severe bodily injury, including death in extreme cases. All applications incorporating Lamb motors should be submitted to appropriate organizations or agencies for testing specifically related to the safety of your equipment.

AMETEK/Floorcare & Specialty Motors
www.ametekfsm.com