

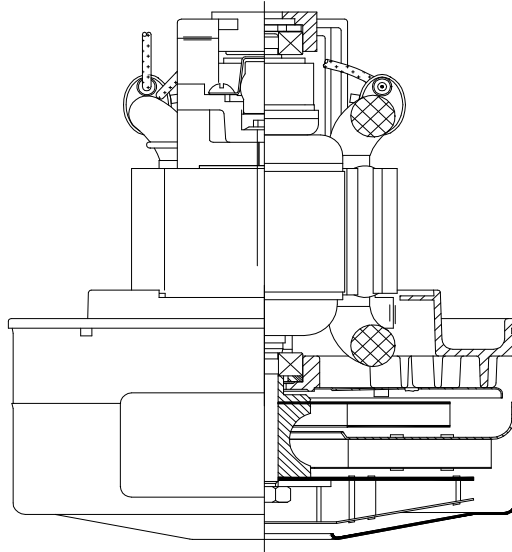


DESCRIPTION

- Two stage
- 36 volts
- 5.7"/145 mm diameter
- Double ball bearings
- Single speed
- Thru-flow discharge
- Aluminum fan end bracket
- Aluminum commutator bracket

DESIGN APPLICATION

- Equipment operating in environments requiring separation of working air from motor ventilating air.
- Designed to handle clean, dry, filtered air only.

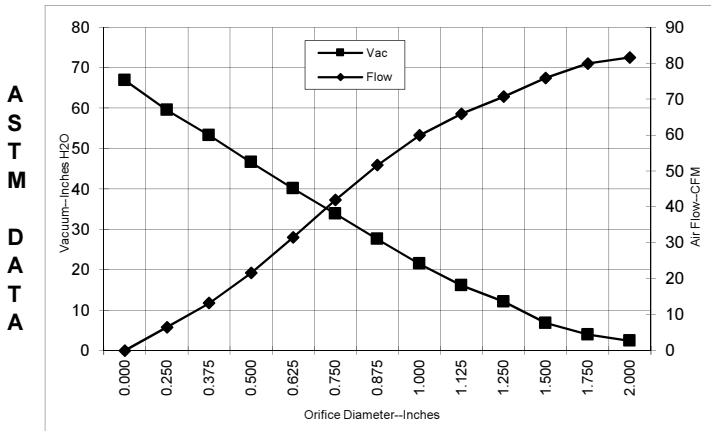


SPECIAL FEATURES

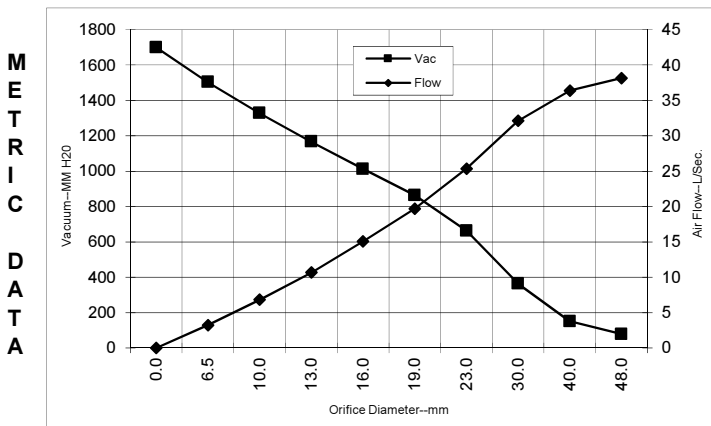
- Suitable for 36 volt DC operation
- UL recognized, category PRGY2 (E47185)
- Provision for grounding
- Skeleton-frame design
- The Lamb Electric vacuum motor line offers a wide range of performance levels to meet design needs

TYPICAL MOTOR PERFORMANCE.*

(At 36 volts, 60Hz, test data is corrected to standard conditions of 29.92 Hg, 68° F.)



Orifice (Inches)	Amps	Watts (In)	RPM	Vac (In.H ₂ O)	Flow (CFM)	Air Watts
2.000	13.4	480	16516	2.4	81.6	23
1.750	13.4	480	16490	4.0	79.9	37
1.500	13.5	483	16446	6.8	75.9	61
1.250	13.5	485	16413	12.1	70.7	101
1.125	13.5	486	16400	16.1	65.9	125
1.000	13.5	484	16403	21.5	59.9	151
0.875	13.4	482	16500	27.6	51.6	168
0.750	13.2	472	16880	33.9	41.9	167
0.625	12.7	455	17333	40.1	31.5	148
0.500	12.0	430	18080	46.6	21.6	118
0.375	11.2	403	19090	53.3	13.2	83
0.250	10.5	378	20053	59.5	6.5	45
0.000	10.2	360	20993	66.9	0.0	0



Orifice (mm)	Amps	Watts (In)	RPM	Vac (mm H ₂ O)	Flow (L/Sec)	Air Watts
48.0	13.4	480	16505	79	38.2	29
40.0	13.4	482	16459	151	36.4	54
30.0	13.5	486	16406	363	32.1	114
23.0	13.4	483	16476	662	25.3	164
19.0	13.1	472	16889	864	19.7	167
16.0	12.7	456	17315	1012	15.1	149
13.0	12.0	433	18005	1167	10.7	121
10.0	11.3	407	18939	1328	6.8	88
6.5	10.6	379	20005	1503	3.2	47
0.0	10.2	360	20993	1699	0.0	0

Note: Metric performance data is calculated from the ASTM data above.

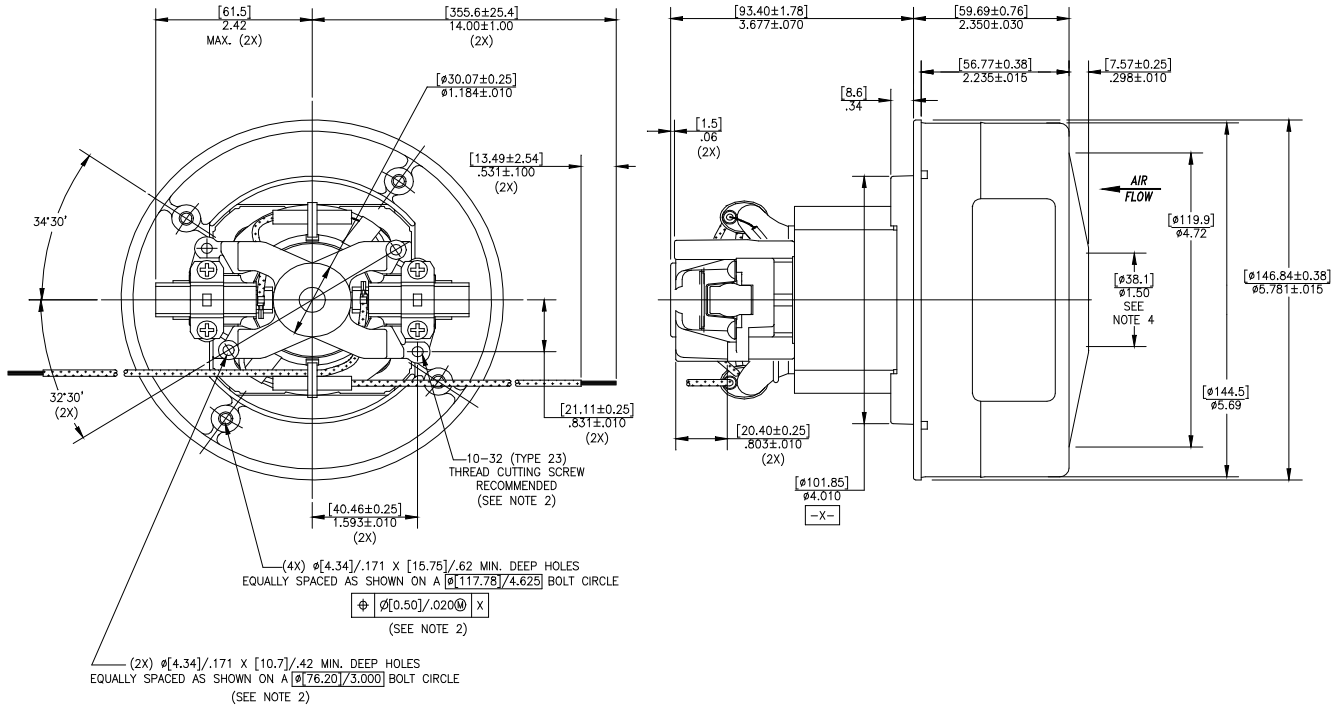
* Data represents performance of a typical motor sampled from a large production quantity. Individual motor data may vary due to normal manufacturing variations.

Test Specs: 36 volts	Minimum Sealed Vacuum: 60"	ORIFICE: 7/8 "	Minimum Vacuum: 26"	Maximum Watts: 565
-----------------------------	-----------------------------------	-----------------------	----------------------------	---------------------------

DIMENSIONS

NOTES:

1. LEADS: 14 GA STRANDED. LEADS CAN BE ANY COLOR EXCEPT GREEN OR GREEN WITH YELLOW STRIPE.
2. GROUNDING OR EARTHING PROVISIONS: USE HOLES AS INDICATED FOR GROUNDING OR EARTHING. REFER TO APPROPRIATE LISTING OR REGULATORY AGENCY FOR PROPER METHOD OF GROUNDING OR EARTHING.
3. MOTOR IDENTIFICATION: MANUFACTURER'S NAME, MODEL NUMBER, VOLTAGE, FREQUENCY, INSPECTOR'S CODE WITH "J" SUFFIX, DATE OF MANUFACTURE, AGENCY RECOGNITION CODE, PLANT LOCATION CODE, AND COUNTRY OF ORIGIN.
4. MOUNTING MUST NOT RESTRICT THIS DIAMETER.



IMPORTANT NOTE: Pictorial and dimensional data are subject to change without notice. Contact factory for current revision levels.

WARNING - When using AMETEK Lamb Electric bypass motors in machines that come in contact with foam, liquid (including water), or other foreign substances, the machine must be designed and constructed to prevent those substances from reaching the fan system, motor housing, and electrical components. Lamb Electric vacuum motors other than hazardous duty models should not be applied in machines that come in contact with dry chemicals or other volatile materials. Failure to observe these precautions could cause flashing (depending on volatility) or electrical shock which could result in property damage and severe bodily injury, including death in extreme cases. All applications incorporating Lamb Electric motors should be submitted to appropriate organizations or agencies for testing specifically related to the safety of your equipment.

AMETEK Dynamic Fluid Solutions
www.ametekdfs.com