



AMETEK
LAMB ELECTRIC

Product Bulletin

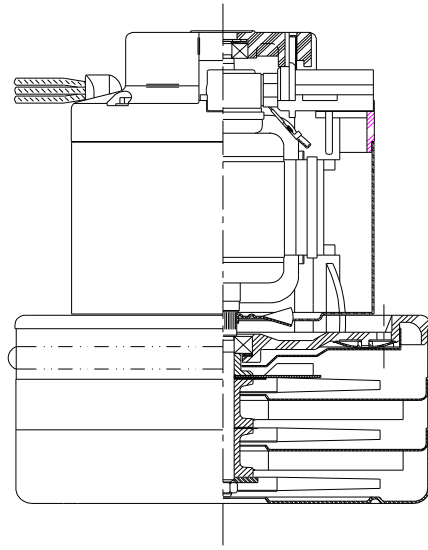
Model: 117744-13

DESCRIPTION

- Three stage
- 240 volts
- 7.2"/183 mm diameter
- Double ball bearing construction
- Single speed
- Peripheral bypass discharge
- Thermoset fan end bracket
- Thermoset commutator bracket

DESIGN APPLICATION

- Equipment operating in environments requiring separation of working air from motor ventilating air
- Designed to handle clean, dry, filtered air only

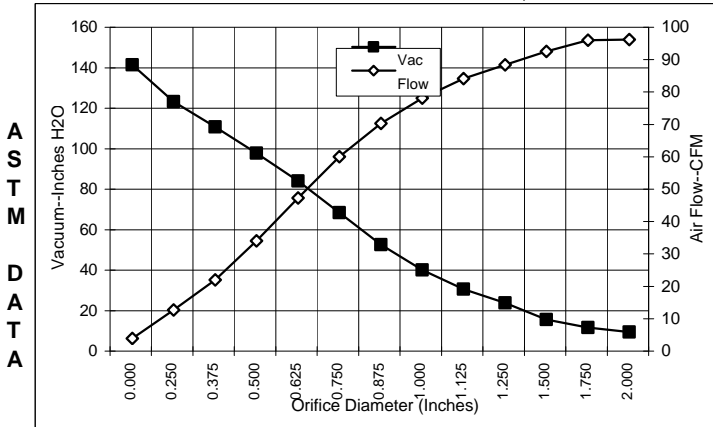


SPECIAL FEATURES

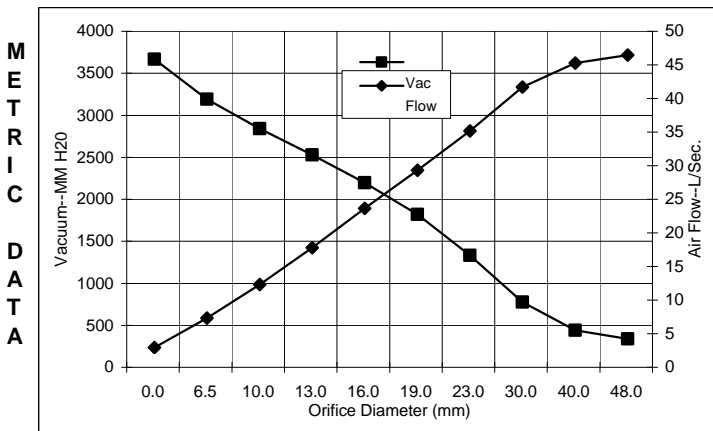
- Suitable for 240 volt operation, 50 or 60 Hz
- UL Recognized, category PRGY2, (E47185)
- 10 mm shaft and bearing system
- Epoxy painted fan case
- Patented air seal bearing construction. U.S. Patent #4,088,424
- The Lamb vacuum motor line offers a wide range of performance levels to meet design needs

TYPICAL MOTOR PERFORMANCE.*

(At 240 volts, 60Hz, test data is corrected to standard conditions of 29.92 Hg, 68° F.)



Orifice (Inches)	Amps	Watts (In)	RPM	Vac (In.H ₂ O)	Flow (CFM)	Air Watts
2.000	6.0	1373	17163	3.1	92.3	34
1.750	6.0	1350	17175	5.3	92.1	57
1.500	6.0	1355	17166	9.3	88.6	97
1.250	6.1	1360	17153	17.6	84.5	175
1.125	6.1	1361	17131	24.3	80.2	230
1.000	6.1	1360	17090	33.8	74.2	295
0.875	6.0	1356	17096	46.4	66.4	362
0.750	6.0	1339	17247	62.1	56.1	409
0.625	5.7	1286	17644	77.8	43.4	397
0.500	5.3	1200	18284	91.6	30.1	324
0.375	4.8	1097	19193	104.5	18.1	222
0.250	4.3	989	20199	117.0	8.8	121
0.000	3.8	872	21430	135.2	0.0	0



Orifice (mm)	Amps	Watts (In)	RPM	Vac (mm H ₂ O)	Flow (L/Sec)	Air Watts
48.0	6.0	1363	17168	103	43.5	44
40.0	6.0	1354	17169	206	42.3	85
30.0	6.1	1361	17141	541	38.8	205
23.0	6.0	1357	17095	1099	32.3	345
19.0	6.0	1338	17255	1585	26.4	409
16.0	5.7	1288	17628	1960	20.7	397
13.0	5.3	1209	18220	2292	14.8	331
10.0	4.9	1112	19057	2605	9.4	237
6.5	4.3	994	20149	2956	4.4	126
0.0	3.8	872	21430	3434	0.0	0

Note: Metric performance data is calculated from the ASTM data above.

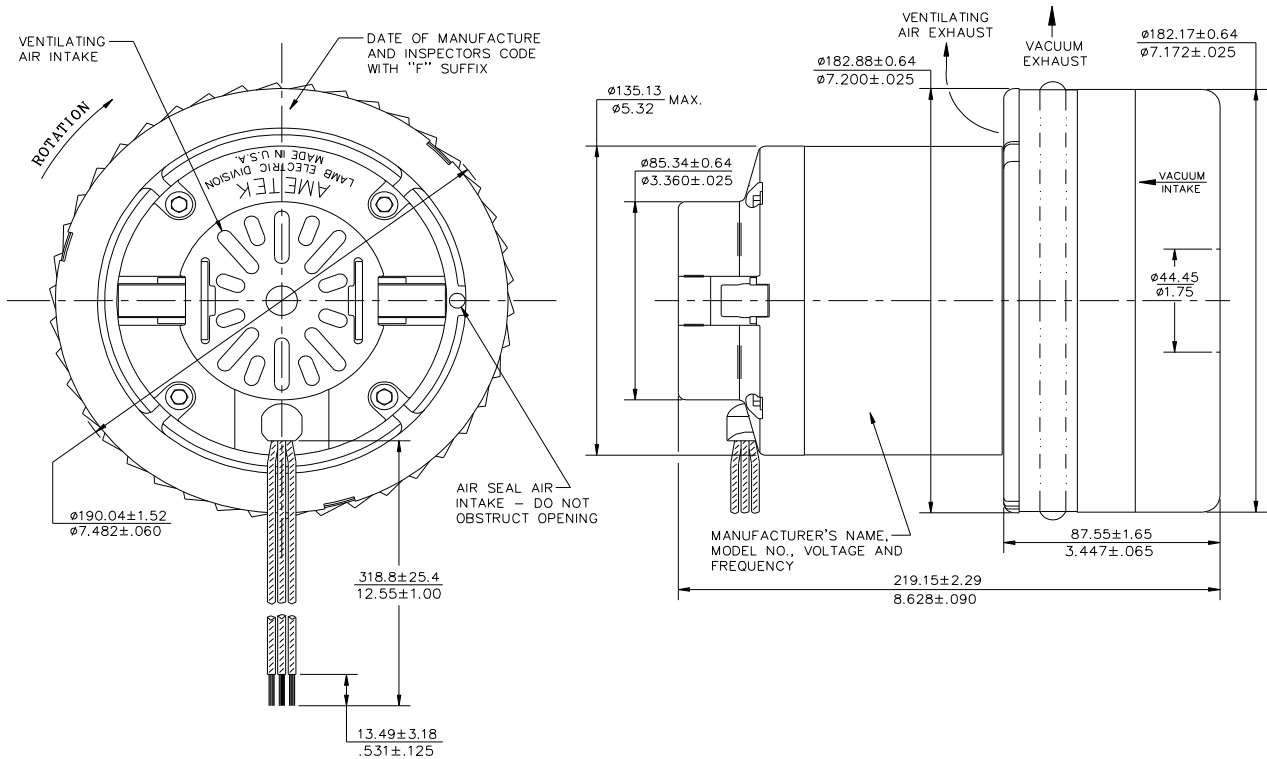
* Data represents performance of a typical motor sampled from a large production quantity. Individual motor data may vary to normal manufacturing variations.

Test Specs:	240 volts	Minimum Sealed Vacuum:	125.0"	ORIFICE:	7/8"	Minimum Vacuum:	42.0"	Maximum Watts:	1460
--------------------	-----------	-------------------------------	--------	-----------------	------	------------------------	-------	-----------------------	------

DIMENSIONS

NOTES:

1. LEADS: 16GA. STRANDED, ONE BLACK AND ONE WHITE. GROUND LEAD: 18GA. STRANDED; COLOR GREEN WITH YELLOW STRIPE.



IMPORTANT NOTE: Pictorial and dimensional data are subject to change without notice. Contact factory for current revision levels.

WARNING - When using AMETEK/Lamb Electric bypass motors in machines that come in contact with foam, liquid (including water) of other foreign substances, the machine must be designed and constructed to prevent those substances from reaching the fan system, motor housing and electrical components. Lamb vacuum motors other than hazardous duty models should not be applied in machines that come in contact with dry chemicals or other volatile materials. Failure to observe these precautions could cause flashing (depending on volatility) or electrical shock which could result in property damage and severe bodily injury, including death in extreme cases. All applications incorporating Lamb motors should be submitted to appropriate organizations or agencies for testing specifically related to the safety of your equipment.

AMETEK/Lamb Electric Division
 627 Lake Street
 Kent, Ohio 44240
 U.S.A.
 Tel: (330) 673-3451
 Fax: (330) 673-8994

Ametek GmbH
 P. O. Box 1251
 D-71667 Marbach
 Germany
 Phone: + 49-714-484-9512
 Fax: + 49-714-484-9513

AMETEK/Singapore Private Limited
 10 Ang Mo Kio Street 65
 # 05-12 Techpoint
 Singapore 2056
 Tel: + 65-484-2388
 Fax: + 65-481-6588