

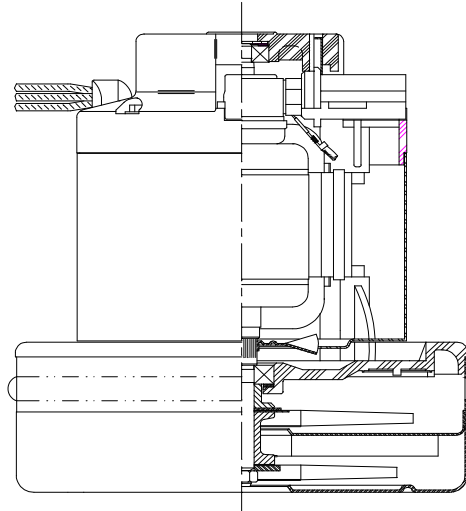


**DESCRIPTION**

- Two stage
- 120 volts
- 7.2"/183 mm diameter
- Double ball bearings
- Single speed
- Peripheral bypass discharge
- Thermoset fan end bracket
- Thermoset commutator bracket

**DESIGN APPLICATION**

- Equipment operating in environments requiring separation of working air from motor ventilating air
- Designed to handle clean, dry, filtered air only

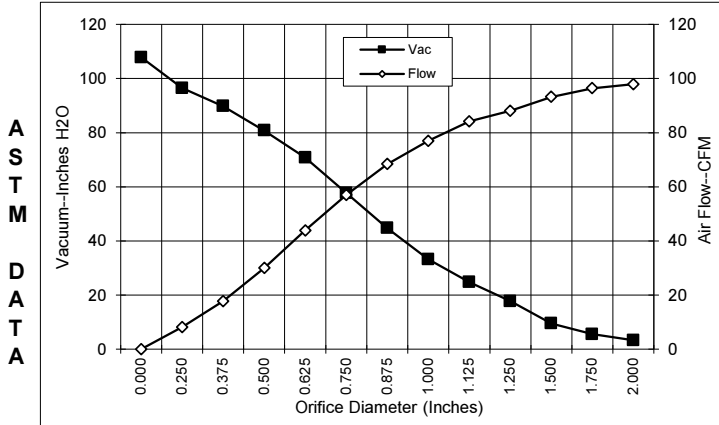


**SPECIAL FEATURES**

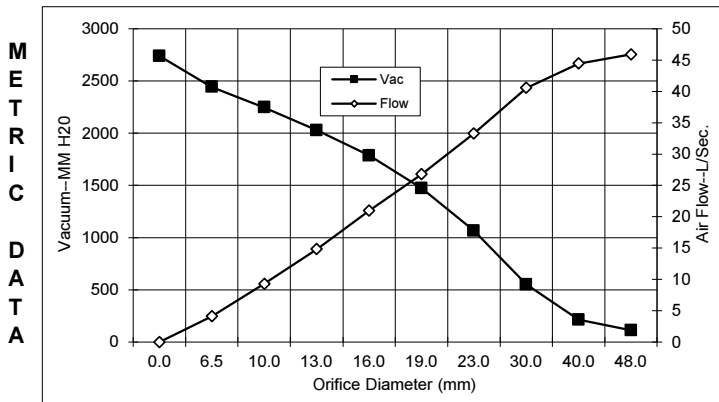
- Suitable for 120 volt AC operation, 50/60 Hz
- UL recognized, category PRGY2 (E47185)
- CSA Certified, class 1611 01 (LR31393)
- Provision for grounding
- 10 mm shaft and bearing system
- The Lamb vacuum motor line offers a wide range of performance levels to meet design needs

**TYPICAL MOTOR PERFORMANCE.\***

(At 120 volts, 60Hz, test data is corrected to standard conditions of 29.92 Hg, 68° F.)



Orifice (Inches)	Amps	Watts (In)	RPM	Vac (In.H <sub>2</sub> O)	Flow (CFM)	Air Watts
2.000	10.9	1264	20542	3.4	97.8	39
1.750	10.9	1262	20562	5.6	96.4	63
1.500	10.9	1261	20550	9.6	93.2	105
1.250	10.9	1259	20509	17.8	88.1	184
1.125	10.8	1258	20546	24.8	84.2	246
1.000	10.8	1253	20628	33.3	77.0	301
0.875	10.8	1255	20623	44.8	68.4	360
0.750	10.7	1240	20766	57.7	57.0	386
0.625	10.2	1193	21182	70.8	43.9	364
0.500	9.6	1121	21858	80.8	30.0	285
0.375	8.8	1036	22793	89.8	17.8	188
0.250	8.1	957	23885	96.5	8.2	93
0.000	7.5	880	24716	107.8	0.0	0



Orifice (mm)	Amps	Watts (In)	RPM	Vac (mm H <sub>2</sub> O)	Flow (L/Sec)	Air Watts
48.0	10.9	1263	20551	111	45.9	49
40.0	10.9	1261	20554	213	44.4	93
30.0	10.8	1258	20529	550	40.6	218
23.0	10.8	1255	20624	1065	33.3	345
19.0	10.6	1239	20774	1472	26.8	386
16.0	10.2	1195	21165	1785	21.0	365
13.0	9.6	1128	21790	2027	14.8	293
10.0	8.9	1049	22653	2247	9.3	202
6.5	8.1	961	23830	2443	4.1	98
0.0	7.5	880	24716	2738	0.0	0

Note: Metric performance data is calculated from the ASTM data above.

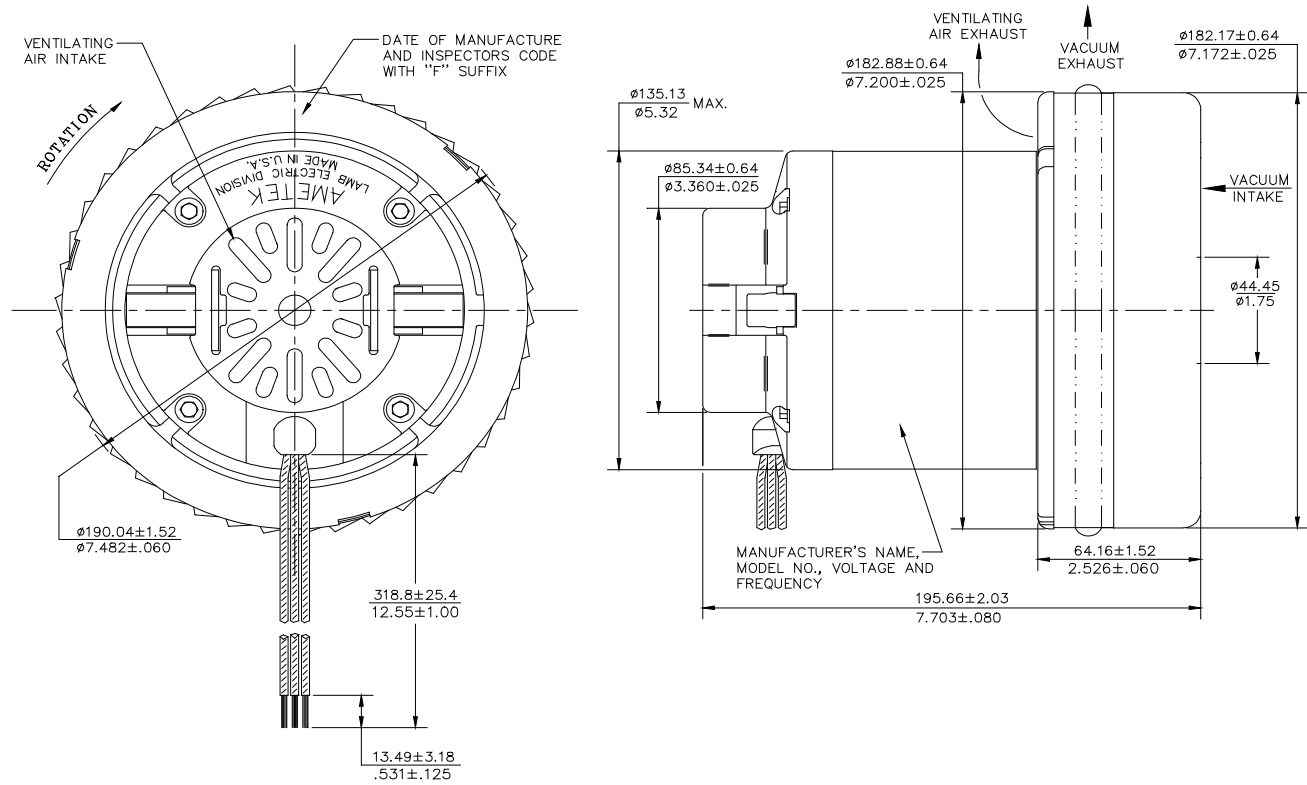
\* Data represents performance of a typical motor sampled from a large production quantity. Individual motor data may vary to normal manufacturing variations.

<b>Test Specs:</b>	120 volts	<b>Minimum Sealed Vacuum:</b>	101.9	<b>ORIFICE:</b>	7/8"	<b>Minimum Vacuum:</b>	43.0	<b>Maximum Watts:</b>	1300
--------------------	-----------	-------------------------------	-------	-----------------	------	------------------------	------	-----------------------	------

**DIMENSIONS**

NOTES:

1. LEADS: 16GA. STRANDED, ONE BLACK AND ONE WHITE. GROUND LEAD: 18GA. STRANDED; COLOR GREEN WITH YELLOW STRIPE.



**IMPORTANT NOTE:** Pictorial and dimensional data are subject to change without notice. Contact factory for current revision levels.

**WARNING** - When using AMETEK/Lamb Electric bypass motors in machines that come in contact with foam, liquid (including water) or other foreign substances, the machine must be designed and constructed to prevent those substances from reaching the fan system, motor housing and electrical components. Lamb vacuum motors other than hazardous duty models should not be applied in machines that come in contact with dry chemicals or other volatile materials. Failure to observe these precautions could cause flashing (depending on volatility) or electrical shock which could result in property damage and severe bodily injury, including death in extreme cases. All applications incorporating Lamb motors should be submitted to appropriate organizations or agencies for testing specifically related to the safety of your equipment.

**AMETEK/Dynamic Fluid Solutions**  
[www.ametekdfs.com](http://www.ametekdfs.com)