



# AMETEK LAMB ELECTRIC

## Product Bulletin

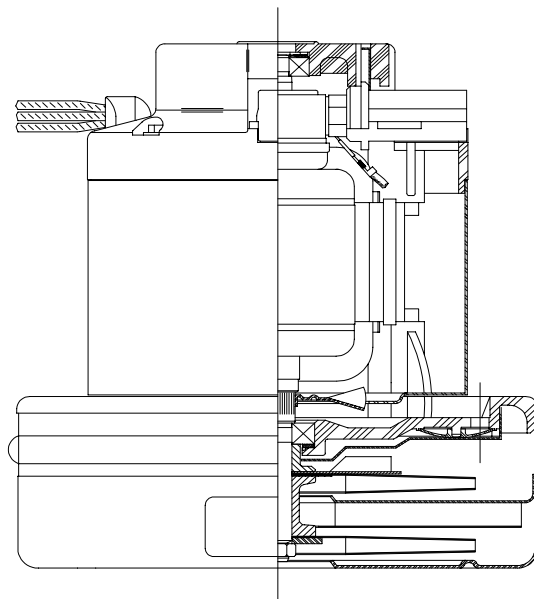
Model: 117510-13

### DESCRIPTION

- Two stage
- 120 volts
- 7.2"/183 mm diameter
- Double ball bearings
- Single speed
- Plastic peripheral bypass discharge
- Thermoset fan end bracket
- Thermoset commutator bracket

### DESIGN APPLICATION

- Equipment operating in environments requiring separation of working air from motor ventilating air
- Designed to handle clean, dry, filtered air only

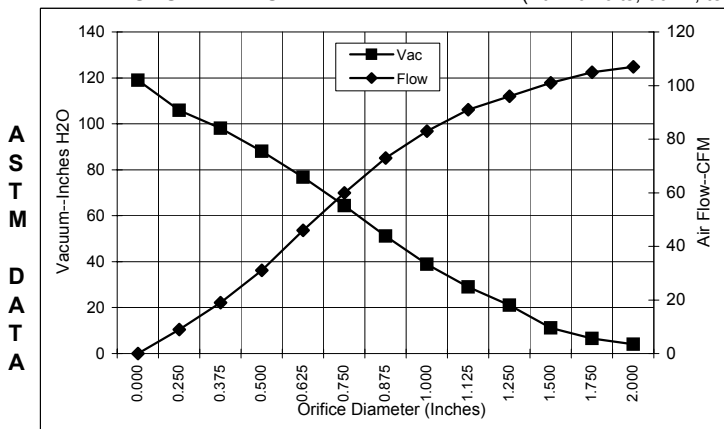


### SPECIAL FEATURES

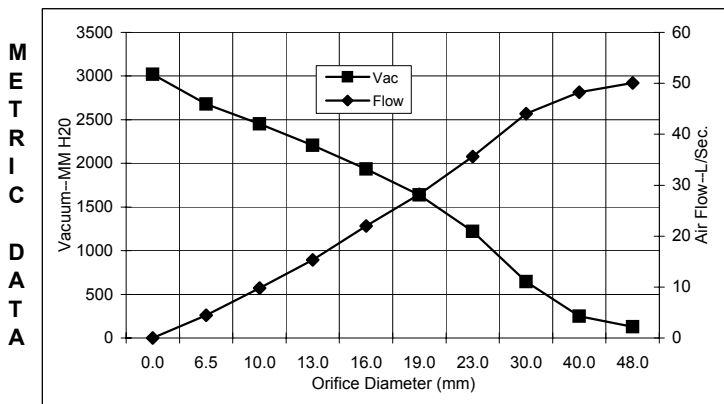
- Suitable for 120 volt AC operation, 50/60 Hz
- UL recognized, category PRGY2 (E47185)
- Provision for grounding
- Epoxy painted fan case
- Skeleton-frame design
- 10 mm shaft and bearing system
- Patented air seal bearing construction. U.S. Patent #4,088,424
- The Lamb vacuum motor line offers a wide range of performance levels to meet design needs

### TYPICAL MOTOR PERFORMANCE.\*

(At 120 volts, 60Hz, test data is corrected to standard conditions of 29.92 Hg, 68° F.)



Orifice (Inches)	Amps	Watts (In)	RPM	Vac (In.H <sub>2</sub> O)	Flow (CFM)	Air Watts
2.000	12.6	1465	19745	4.0	107.0	51
1.750	12.6	1466	19667	6.5	105.0	81
1.500	12.6	1467	19694	11.2	101.0	133
1.250	12.6	1465	19670	21.1	96.0	238
1.125	12.7	1472	19617	29.0	91.0	310
1.000	12.6	1464	19678	38.8	83.0	380
0.875	12.4	1449	19760	51.1	73.0	439
0.750	12.1	1412	20127	64.3	60.0	455
0.625	11.5	1345	20602	76.7	46.0	411
0.500	10.7	1262	21420	88.0	31.0	324
0.375	9.8	1163	22416	98.1	19.0	214
0.250	9.0	1063	23499	105.9	9.0	107
0.000	8.3	986	24480	118.9	0.0	0



Orifice (mm)	Amps	Watts (In)	RPM	Vac (mm H <sub>2</sub> O)	Flow (L/Sec)	Air Watts
48.0	12.6	1465	19711	130	50.1	64
40.0	12.6	1467	19686	249	48.2	117
30.0	12.7	1469	19641	646	44.0	278
23.0	12.5	1453	19740	1220	35.6	424
19.0	12.1	1411	20137	1640	28.2	454
16.0	11.5	1348	20583	1936	22.0	413
13.0	10.8	1270	21338	2206	15.3	333
10.0	9.9	1178	22267	2453	9.8	231
6.5	9.0	1068	23445	2680	4.5	112
0.0	8.3	986	24480	3020	0.0	0

Note: Metric performance data is calculated from the ASTM data above.

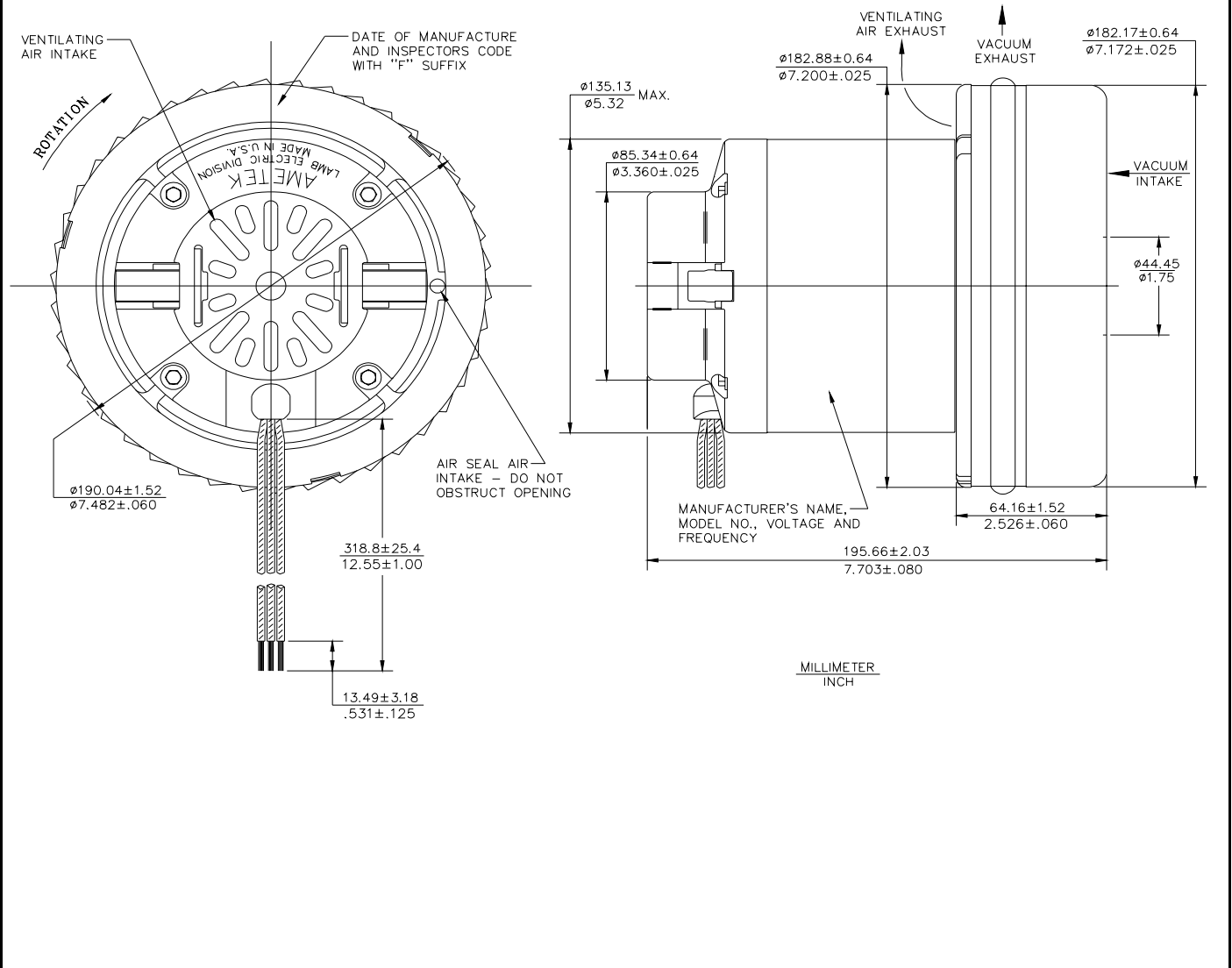
\* Data represents performance of a typical motor sampled from a large production quantity. Individual motor data may vary to normal manufacturing variations.

Test Specs:	120 volts	Minimum Sealed Vacuum:	ORIFICE:	7/8"	Minimum Vacuum:	47.0"	Maximum Watts:	1600
-------------	-----------	------------------------	----------	------	-----------------	-------	----------------	------

**DIMENSIONS**

NOTES:

1. LEADS: 16GA. STRANDED, ONE BLACK AND ONE WHITE. GROUND LEAD: 18GA. STRANDED; COLOR GREEN WITH YELLOW STRIPE.



**IMPORTANT NOTE:** Pictorial and dimensional data are subject to change without notice. Contact factory for current revision levels.

**WARNING** - When using AMETEK/Lamb Electric bypass motors in machines that come in contact with foam, liquid (including water) or other foreign substances, the machine must be designed and constructed to prevent those substances from reaching the fan system, motor housing and electrical components. Lamb vacuum motors other than hazardous duty models should not be applied in machines that come in contact with dry chemicals or other volatile materials. Failure to observe these precautions could cause flashing (depending on volatility) or electrical shock which could result in property damage and severe bodily injury, including death in extreme cases. All applications incorporating Lamb motors should be submitted to appropriate organizations or agencies for testing specifically related to the safety of your equipment.

**AMETEK/Lamb Electric Division**  
**627 Lake Street**  
**Kent, Ohio 44240**  
**U.S.A.**  
**Tel: (330) 673-3786 Fax: (330) 677-3812**  
**www.lambelectric.com**