

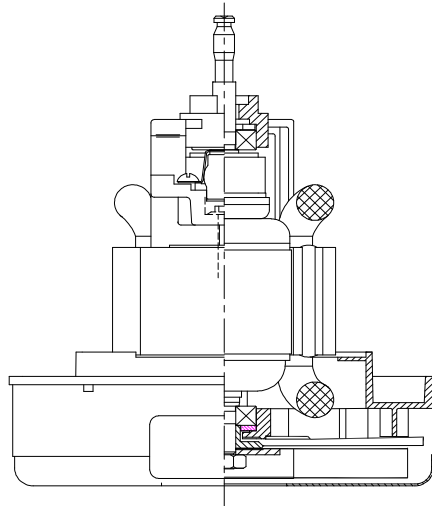


DESCRIPTION

- One stage
- 120 volts
- 5.7"145 mm diameter
- Ball/ Sleeve bearings
- Single speed
- Thru-flow discharge
- Aluminum fan end bracket
- Aluminum commutator bracket

DESIGN APPLICATION

- Equipment operating in environments not requiring separation of working air from motor ventilating air
- Designed to handle clean, dry, filtered air only

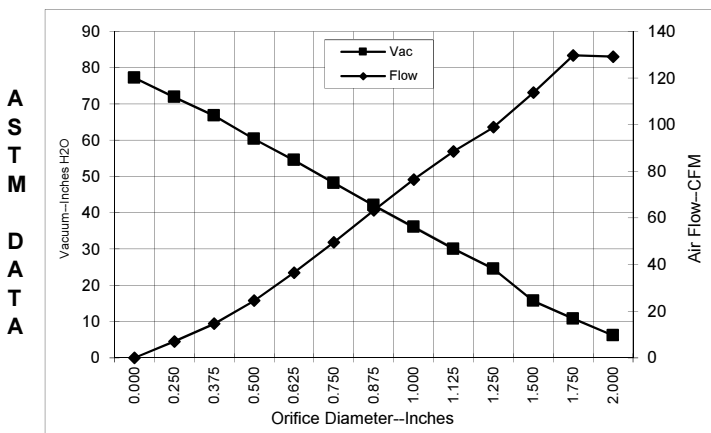


SPECIAL FEATURES

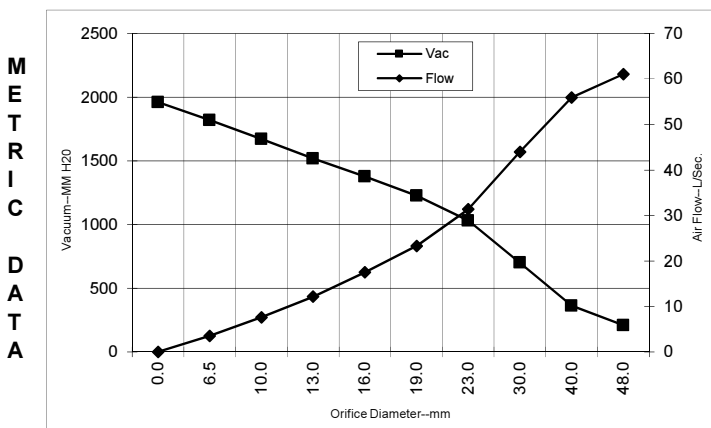
- Suitable for 120 volt AC operation, 50/60 Hz
- UL recognized, category PRGY2 (E47185)
- CSA certified, class 1611 01 (LR31393)
- Provision for grounding
- Skeleton-frame design
- The Lamb Electric vacuum motor line offers a wide range of performance levels to meet design needs

TYPICAL MOTOR PERFORMANCE.*

(At 120 volts, 60Hz, test data is corrected to standard conditions of 29.92 Hg, 68° F.)



Orifice (Inches)	Amps	Watts (In)	RPM	Vac (In.H ₂ O)	Flow (CFM)	Air Watts
2.000	8.8	1017	22037	6.2	129.1	94
1.750	8.8	1019	22068	10.8	129.7	164
1.500	8.6	999	22199	15.7	113.7	209
1.250	8.4	975	22536	24.5	98.9	285
1.125	8.2	950	22846	30.0	88.5	312
1.000	7.9	916	23292	36.0	76.5	323
0.875	7.5	877	23891	42.1	63.2	312
0.750	7.1	831	24644	48.2	49.6	280
0.625	6.6	774	25667	54.5	36.5	234
0.500	6.1	719	26889	60.4	24.5	174
0.375	5.6	666	28238	66.7	14.7	115
0.250	5.2	622	29576	71.8	7.1	60
0.000	5.0	590	30765	77.2	0.0	0



Orifice (mm)	Amps	Watts (In)	RPM	Vac (mm H ₂ O)	Flow (L/Sec)	Air Watts
48.0	8.8	1018	22051	209	61.1	125
40.0	8.7	1005	22160	361	55.9	196
30.0	8.3	961	22707	700	44.0	299
23.0	7.6	887	23741	1030	31.4	315
19.0	7.1	829	24665	1227	23.3	279
16.0	6.6	776	25626	1377	17.5	235
13.0	6.1	724	26767	1518	12.1	180
10.0	5.7	674	28036	1671	7.6	124
6.5	5.2	624	29509	1818	3.5	62
0.0	5.0	590	30765	1960	0.0	0

Note: Metric performance data is calculated from the ASTM data above.

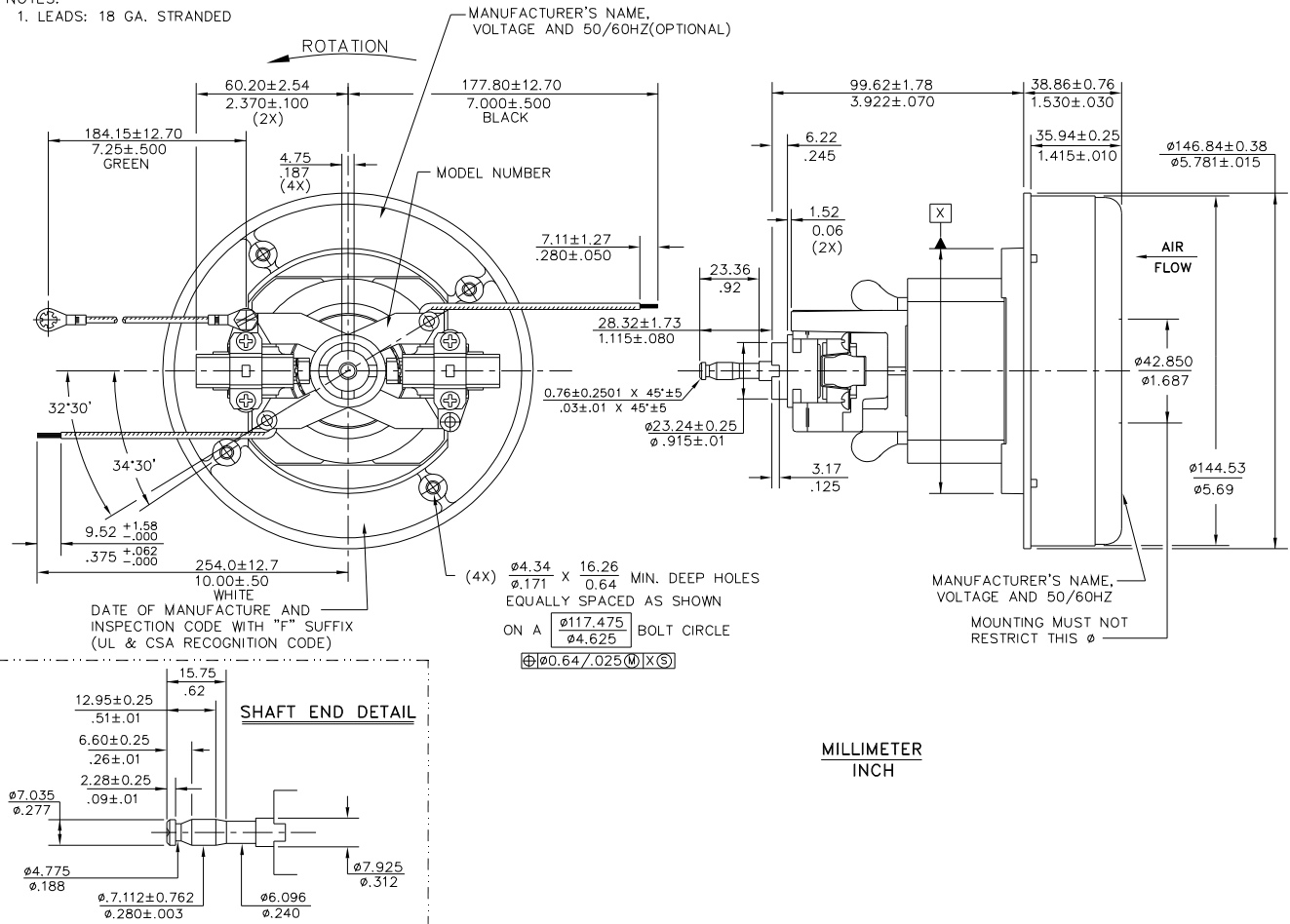
* Data represents performance of a typical motor sampled from a large production quantity. Individual motor data may vary due to normal manufacturing variations.

Test Specs:	120 volts	Minimum Sealed Vacuum: 61"	ORIFICE:	7/8"	Minimum Vacuum: 35.2"	Maximum Watts:	1020
-------------	-----------	----------------------------	----------	------	-----------------------	----------------	------

DIMENSIONS

NOTES:

1. LEADS: 18 GA. STRANDED



IMPORTANT NOTE: Pictorial and dimensional data are subject to change without notice. Contact factory for current revision levels.

WARNING - AMETEK Lamb Electric thru-flow vacuum motors must never be used in applications in which wet or moist conditions are involved, where dry chemicals or other volatile materials are present, or where airflow may be restricted or blocked. Such motors are designed to permit the vacuumed air to pass over the electrical winding to cool it. Thus any foam, liquid (including water), dry chemical, or other foreign substance coming in contact with electrical conductors could cause combustion (depending on volatility) or electrical shock. Failure to observe these precautions could result in property damage and severe personal injury, including death in extreme cases. All applications incorporating Lamb Electric motors should be submitted to Underwriters Laboratories Inc. or other appropriate organizations or agencies for testing specifically related to the safety of your equipment.

AMETEK Dynamic Fluid Solutions
www.ametekdfs.com