



AMETEK
LAMB ELECTRIC

Product Bulletin

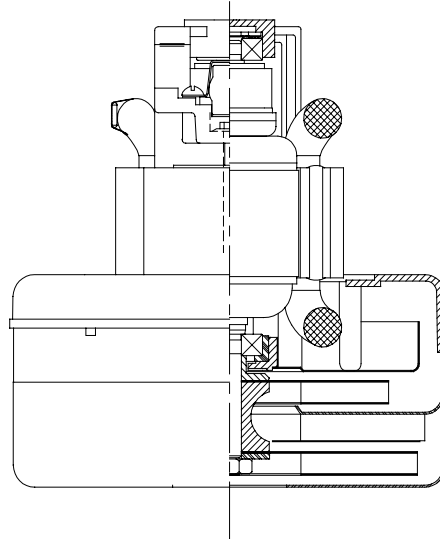
Model: 116845-00

DESCRIPTION

- Two stage
- 120 volts
- 5.7"/145 mm diameter
- Double ball bearings
- Single speed
- Thru flow discharge
- Aluminum fan end bracket
- Aluminum commutator bracket

DESIGN APPLICATION

- Equipment operating in environments not requiring separation of working air from motor ventilating air
- Designed to handle clean, dry, filtered air only

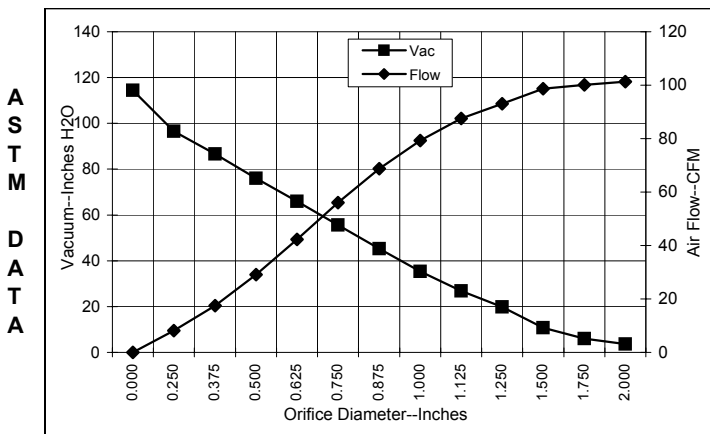


SPECIAL FEATURES

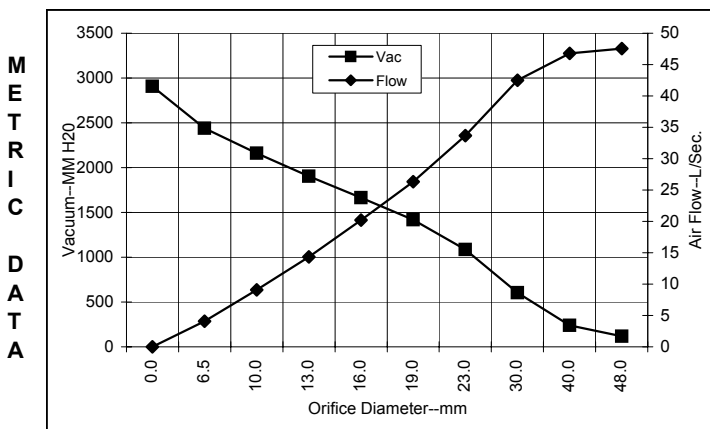
- Suitable for 120 volt AC operation 50/60 Hz
- UL recognized, category PRGY2 (E47185)
- Provision for grounding
- Skeleton frame design
- Thermostat protection, automatic reset
- The Lamb vacuum motor line offers a wide range of performance levels to meet design needs

TYPICAL MOTOR PERFORMANCE.*

(At 120 volts, 60Hz, test data is corrected to standard conditions of 29.92 Hg, 68° F.)



Orifice (Inches)	Amps	Watts (In)	RPM	Vac (In.H ₂ O)	Flow (CFM)	Air Watts
2.000	10.5	1252	21890	3.6	101.3	43
1.750	10.5	1254	21880	6.0	100.1	71
1.500	10.5	1259	21790	10.8	98.7	125
1.250	10.6	1267	21710	19.9	93.1	218
1.125	10.6	1264	21740	26.8	87.5	275
1.000	10.5	1251	21850	35.3	79.3	329
0.875	10.2	1220	22130	45.2	68.7	365
0.750	9.8	1167	22640	55.6	56.0	366
0.625	9.2	1093	23430	65.9	42.3	327
0.500	8.5	1008	24400	76.0	29.1	260
0.375	7.6	914	25800	86.6	17.5	178
0.250	6.8	819	27380	96.6	8.2	93
0.000	6.2	748	28870	114.4	0.0	0



Orifice (mm)	Amps	Watts (In)	RPM	Vac (mm H ₂ O)	Flow (L/Sec)	Air Watts
48.0	10.5	1253	21886	118	47.6	55
40.0	10.5	1258	21817	238	46.8	109
30.0	10.6	1265	21727	602	42.5	249
23.0	10.3	1228	22060	1085	33.7	356
19.0	9.8	1166	22656	1417	26.3	365
16.0	9.2	1096	23398	1663	20.2	329
13.0	8.6	1017	24303	1905	14.4	267
10.0	7.7	928	25590	2159	9.1	190
6.5	6.8	824	27301	2441	4.1	97
0.0	6.2	748	28870	2906	0.0	0

Note: Metric performance data is calculated from the ASTM data above.

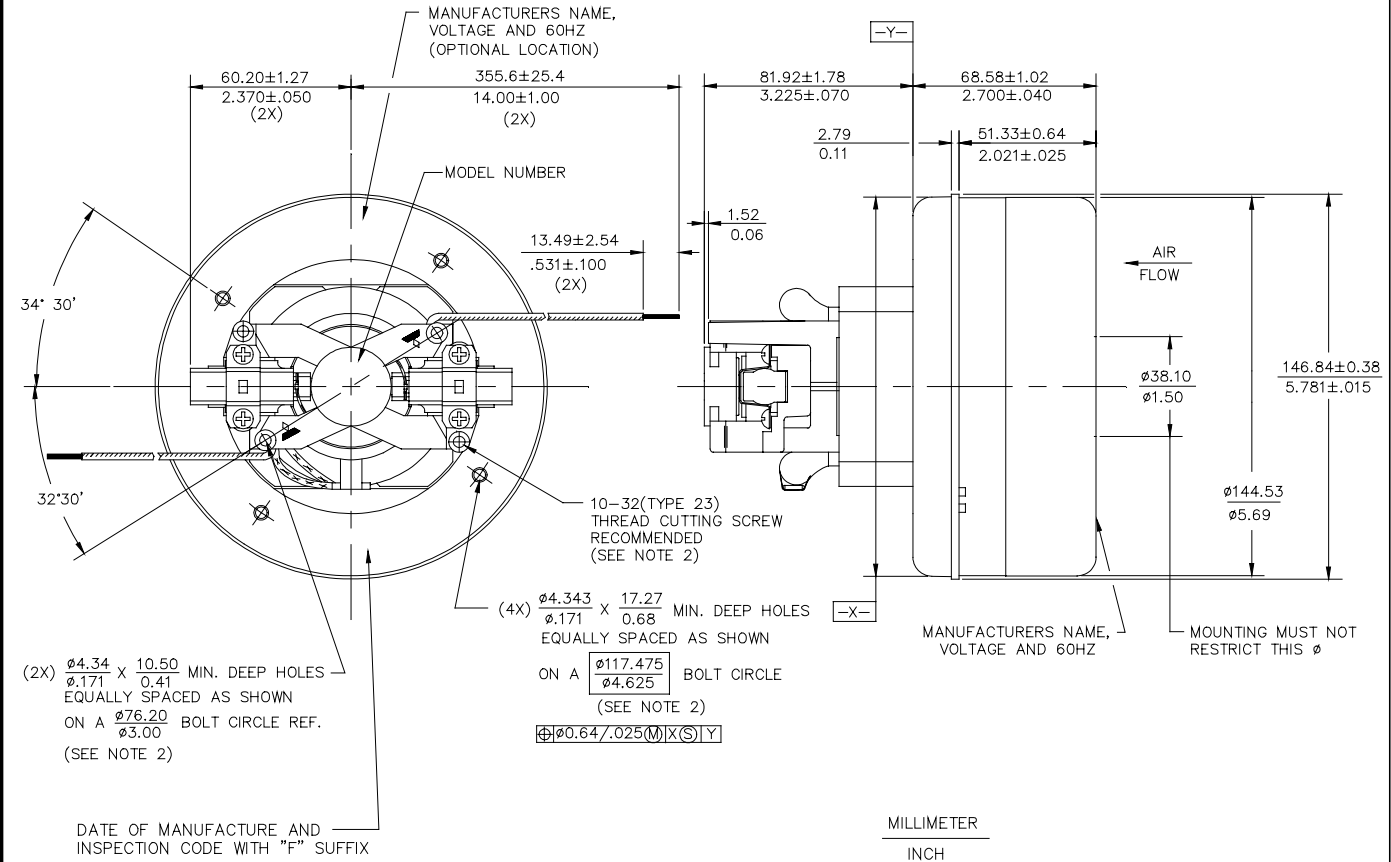
* Data represents performance of a typical motor sampled from a large production quantity. Individual motor data may vary to normal manufacturing variations.

Test Specs:	120 volts	Minimum Sealed Vacuum:	106.0"	ORIFICE:	7/8"	Minimum Vacuum:	40.0"	Maximum Watts:	1340
-------------	-----------	------------------------	--------	----------	------	-----------------	-------	----------------	------

DIMENSIONS

NOTES:

1. LEADS: 18GA STRANDED, LEADS CAN BE ANY COLOR EXCEPT GREEN OR GREEN WITH YELLOW STRIPE.
2. GROUNDING OR EARTHING PROVISIONS: USE HOLES AS INDICATED FOR GROUNDING OR EARTHING. REFER TO APPROPRIATE LISTING OR REGULATORY AGENCY FOR PROPER METHOD OF GROUNDING OR EARTHING.



IMPORTANT NOTE: Pictorial and dimensional data are subject to change without notice. Contact factory for current revision levels.

WARNING - Ametek/Lamb Electric thru-flow vacuum motors must never be used in applications in which wet or moist conditions are involved, where dry chemicals or other volatile materials are present or where airflow may be restricted or blocked. Such motors are designed to permit the vacuumed air to pass over the electrical winding to cool it. Thus any foam, liquid (including water), dry chemical or other foreign substance will come in contact with electrical conductors which could cause combustion (depending on volatility) or electrical shock. Failure to observe these precautions could result in property damage and severe personal injury, including death in extreme cases. All applications incorporating Lamb motors should be submitted to Underwriters Laboratories Inc. or other appropriate organizations or agencies for testing specifically related to the safety of your equipment.

AMETEK/Lamb Electric Division
 627 Lake Street
 Kent, Ohio 44240
 U.S.A.
 Tel: (330) 673-3451
 Fax: (330) 673-8994

Ametek GmbH
 P. O. Box 1251
 D-71667 Marbach
 Germany
 Phone: + 49-714-484-9512
 Fax: + 49-714-484-9513

AMETEK/Singapore Private Limited
 10 Ang Mo Kio Street 65
 # 05-12 Techpoint
 Singapore 2056
 Tel: + 65-484-2388
 Fax: + 65-481-6588