



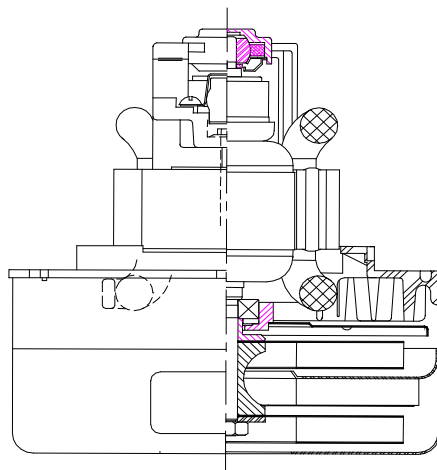
**Model: 116429-00**

**DESCRIPTION**

- Two stage
- 120 volts
- 5.7"/145 mm diameter
- Double ball bearings
- Single speed
- Thru-flow discharge
- Thermost fan end bracket
- Aluminum commutator bracket

**DESIGN APPLICATION**

- Equipment operating in environments not requiring separation of working air from motor ventilating air
- Designed to handle clean, dry, filtered air only



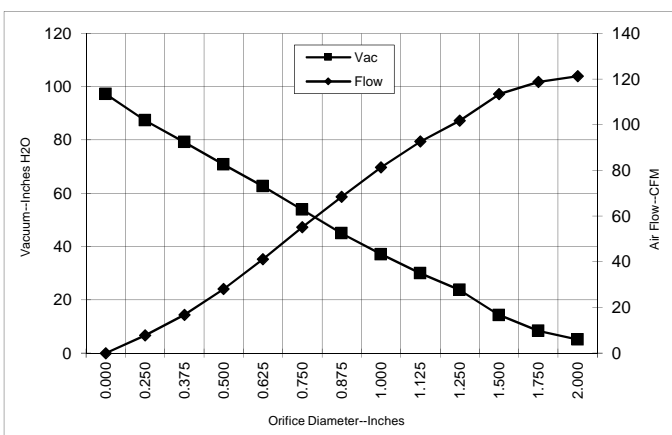
**SPECIAL FEATURES**

- Suitable for 120 volt AC operation, 60 Hz
- UL recognized, category PRGY2 (E47185)
- CSA certified, class 1611 01 (LR31393)
- Provision for grounding
- Skeleton-frame construction
- Thermal protection, automatic reset, UL category XEWR2 (E27701)
- High air flow fan system
- The Lamb Electric vacuum motor line offers a wide range of performance levels to meet design needs

**TYPICAL MOTOR PERFORMANCE.\***

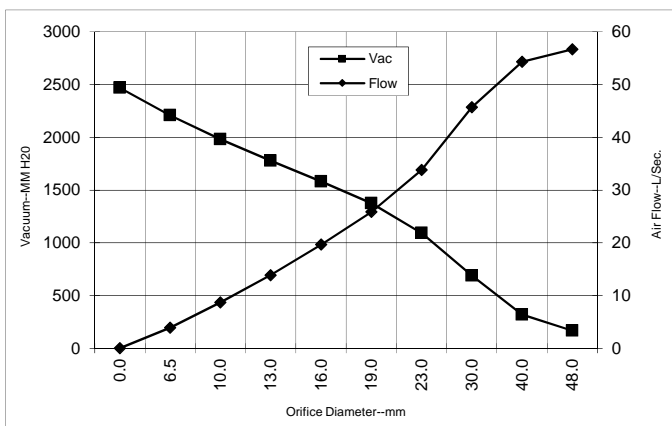
(At 120 volts, 60Hz, test data is corrected to standard conditions of 29.92 Hg, 68° F.)

**A  
S  
T  
M  
  
D  
A  
T  
A**



Orifice (Inches)	Amps	Watts (In)	RPM	Vac (In.H2O)	Flow (CFM)	Air Watts
2.000	9.4	1069	18830	5.1	121.2	73
1.750	9.5	1083	18710	8.4	118.7	117
1.500	9.6	1093	18690	14.3	113.4	190
1.250	9.6	1093	18610	23.7	101.8	284
1.125	9.5	1077	18700	30.0	92.6	326
1.000	9.2	1052	18790	37.1	81.3	354
0.875	9.0	1016	19410	45.0	68.4	362
0.750	8.4	965	19990	53.9	55.1	349
0.625	7.8	902	20810	62.6	41.1	303
0.500	7.2	827	21810	70.8	28.1	233
0.375	6.5	748	23000	79.2	16.7	156
0.250	5.8	672	24290	87.3	7.8	80
0.000	5.4	627	25350	97.2	0.0	0

**M  
E  
T  
R  
I  
C  
  
D  
A  
T  
A**



Orifice (mm)	Amps	Watts (In)	RPM	Vac (mm H2O)	Flow (L/Sec)	Air Watts
48.0	9.4	1075	18777	166	56.7	92
40.0	9.6	1090	18696	318	54.3	168
30.0	9.5	1084	18660	690	45.7	307
23.0	9.1	1025	19255	1093	33.8	360
19.0	8.4	964	20006	1373	25.9	348
16.0	7.8	905	20777	1581	19.7	305
13.0	7.3	835	21710	1777	13.9	240
10.0	6.6	760	22822	1980	8.7	168
6.5	5.8	676	24226	2207	3.9	84
0.0	5.4	627	25350	2469	0.0	0

Note: Metric Performance data is calculated from the ASTM data above.

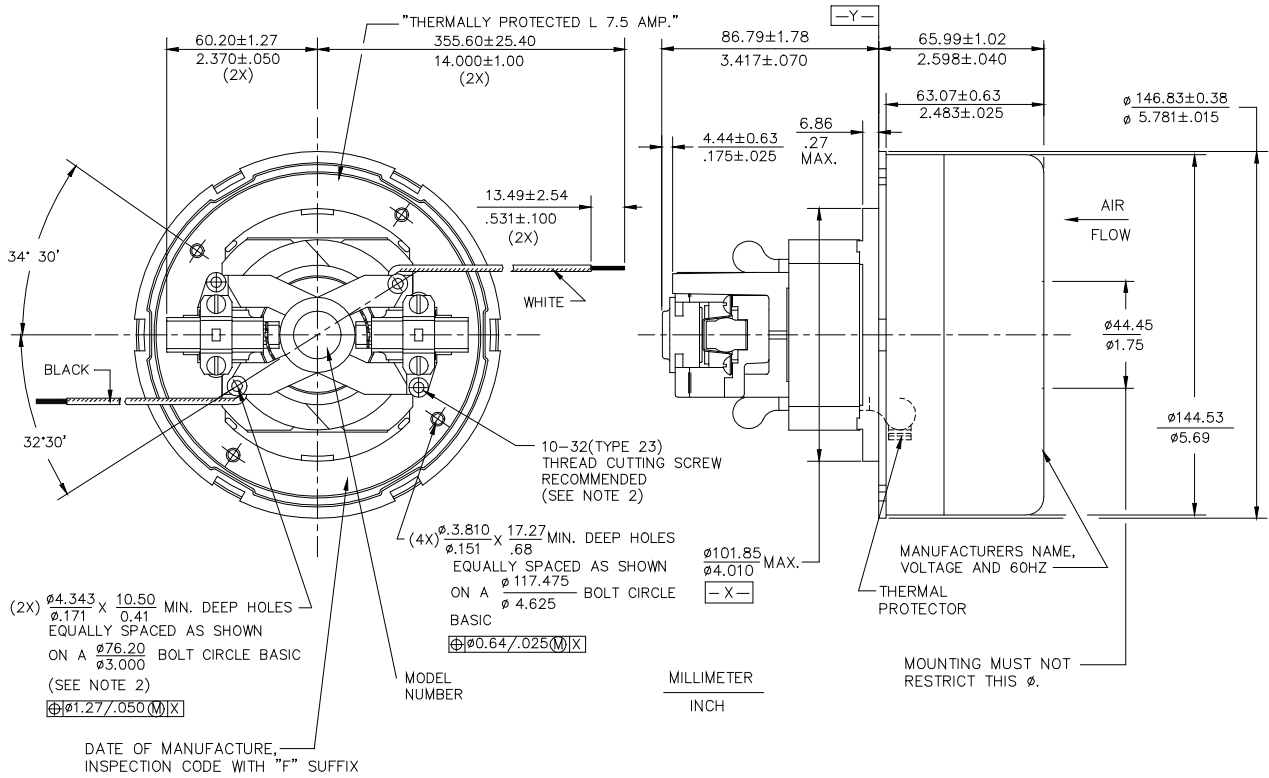
\* Data represents performance of a typical motor sampled from a large production quantity. Individual motor data may vary due to normal manufacturing variations.

<b>Test Specs:</b>	120 volts	<b>Minimum Sealed Vacuum:</b>	88.0"	<b>ORIFICE:</b>	7/8 "	<b>Minimum Vacuum:</b>	41.0"	<b>Maximum Watts:</b>	1170
--------------------	-----------	-------------------------------	-------	-----------------	-------	------------------------	-------	-----------------------	------

**DIMENSIONS**

NOTES:

1. LEADS: BLACK AND WHITE, 18GA. STRANDED (BLACK LEAD IS THERMAL PROTECTOR LEAD.)
2. GROUNDING OR EARTHING PROVISIONS: USE HOLES AS INDICATED FOR GROUNDING OR EARTHING. REFER TO APPROPRIATE LISTING OR REGULATORY AGENCY FOR PROPER METHOD OF GROUNDING OR EARTHING.



**IMPORTANT NOTE:** Pictorial and dimensional data are subject to change without notice. Contact factory for current revision levels.

**WARNING** - AMETEK Lamb Electric thru-flow vacuum motors must never be used in applications in which wet or moist conditions are involved, where dry chemicals or other volatile materials are present, or where airflow may be restricted or blocked. Such motors are designed to permit the vacuumed air to pass over the electrical winding to cool it. Thus any foam, liquid (including water), dry chemical, or other foreign substance coming in contact with electrical conductors could cause combustion (depending on volatility) or electrical shock. Failure to observe these precautions could result in property damage and severe personal injury, including death in extreme cases. All applications incorporating Lamb Electric motors should be submitted to Underwriters Laboratories Inc. or other appropriate organizations or agencies for testing specifically related to the safety of your equipment.

**AMETEK/Floorcare & Specialty Motors**  
**www.ametekfsm.com**